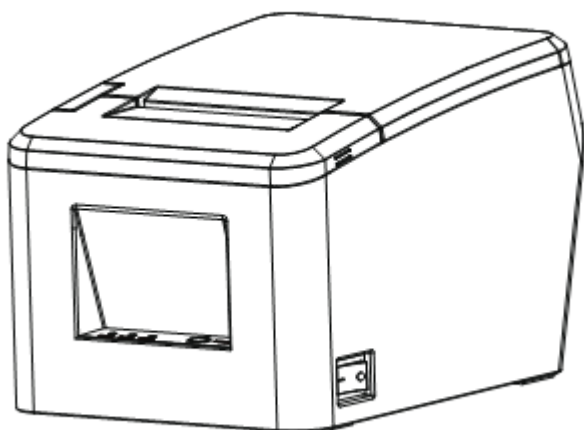


onix

TP40



User Manual

Content

Statement.....	1
Important Safety Instructions	2
1 OVERVIEW	4
1.1 Introductions	4
1.2 The Main Features.....	4
2 GETTING STARTED	5
2.1 Packing List	5
2.2 Appearance	6
2.3 Dimensions.....	7
3 SPECIFICATION.....	8
3.1 Printer Specification	8
3.2 Printing Media Specification	10
3.2.1 Continuous Thermal Paper Specification	10
3.2.2 Notices.....	10
3.3 Printing and Cutting Position	11
3.3.1 Printing position	11
3.3.2 Cutting Position	12
4 INSTALLATION AND USAGE	13
4.1 Media Loading.....	13
4.2 Power Connection	15
4.3 Cash Drawer Connection.....	16
4.4 LED Indication.....	16
4.5 Print Test.....	17
4.5.1 Print Self-Test.....	17
4.5.2 Printing of Windows Driver Program	17

5 INTERFACES	18
5.1 USB	18
5.2 Cash Drawer Interface	19
5.3 Power Port Definition	20
5.4 Serial Interface	21
5.5 Ethernet Interface	21
6 TROUBLESHOOTING	22
6.1 Printer Not Working	22
6.2 LED Indicator and Beeper Alarm	22
6.3 Troubles Occur During Printing	22
6.4 Problems Emerge During the Paper Cutting	23
6.5 Remove Jammed Paper	24
7 PRINTER CLEANING AND MAINTENANCE	26
7.1 Cleaning Head	26
7.2 Cleaning Sensors, Roller and/or Paper Path	26
7 Utility Tool Instruction	27
7.1 Utility Tool Installation	28
7.2 Utility Tool Using	33
7.2.1 Add/Modify/Delete/Connection Printer	33
7.3 Function	38
7.3.1 Printer Test	39
7.3.2 Command test	44
7.3.3 Manage Images	47
7.3.4 Download Font to Printer	51
7.3.5 Parameter Setting	52
7.3.6 Advanced Setting	53
7.4 Firmware Update	57

8 WINDOWAS DRIVER INSTRUCTION 59

8.1 Manual Information 59

8.2 Operating System (OS) Environment..... 59

8.3 Windows Driver Preparation..... 59

8.4 Windows Driver Installation..... 60

8.5 Detailed Windows Driver Setting..... 64

8.5.1 Printing Preferences 64

8.5.2 Other Settings 100

8.6. Uninstall Windows Driver 104

8.7 Specification 106

Statement

Copyright

This manual is printed in 2019.

Printed in China.

1.0 Version.

Warnings



This must be complied with in order to avoid any damage to the human body and to the equipment.



This is showing the important information and tips for the printer operating.

Note

Due to continuous update of product, please take in kind of real machine, such as accessories, programs etc.

Important Safety Instructions

◆ Safety Warning



Warnings: The print head will become very hot during printing. avoid contact with the print head after printing has finished.



Warnings: Do not touch the printer head and connector in case static damage the printer head.

◆ Instructions

Carefully read the installation and operating instructions provided with the printer before starting up your printer.

- 1) Place the printer on a flat and stable surface.
- 2) Leave enough space around printer for operation and maintenance.
- 3) Do not place the printer on or near a heat source.
- 4) Do not use the printer near water. Never spill liquid into the printer.
- 5) Do not expose the printer to high temperatures, direct sunlight or dust.
- 6) Protect the printer from shock, impact and vibration.
- 7) Be certain the power source is within the voltage rating and frequency listed for the printer.
- 8) Switch off the printer power supply when won't use it for a long time.
- 9) Do not place the power cord where it can be stepped on. If the power cord becomes damaged or frayed, replace it immediately.
- 10) To ensure the print quality and reliability, you are suggested to use the recommended paper or the same quality paper.
- 11) Please switch off the power supply when connect/disconnect all the ports or it will cause damage to the printer control circuit.
- 12) Never carry out maintenance or repair work yourself. Always contact a qualified service technician.
- 13) Keep this User Manual in a place which is easily accessible at all times.

◆ Other Precautions

The copyright for this user manual and various other manuals is property of our company. Any copying or conversion into electronic form and saving of this material without the express written permission is strictly prohibited. Use of the information contained in this manual is not subject to any patent liability. This manual has been prepared with utmost care and attention to detail but may contain certain errors and/or omissions. Our company is not legally liable for any damages resulting from the use of the information in this manual. Our company and its affiliates are not legally liable (United States excluded) for any damages, loss, costs, and/or expenses that result from the breakdown, malfunction, and/or misuse of the product due to violation or neglect of the operation and maintenance information and instructions provided by our company, as well as from the unauthorized alteration, repair, and/or modification of the product by the user and/or third party. We are not legally liable for any damages and/or issues resulting from the use of options and/or parts that are not authentic or authorized products.

◆ WEEE (Waste Electrical and Electric Equipment)



This mark shown on the product or its literature indicates that the corresponding item should not be discarded at the end of its working life with other household waste. To prevent possible harm to the environment or human health from uncontrolled waste disposal, please separate marked items from other types of waste and recycle them responsibly to promote the sustained reuse of material resources. Household users should contact either the retailer where they purchased this product, or their local government office for details of where and how they can conduct environmentally safe recycling of such items. Commercial users should contact their suppliers and check the terms and conditions of purchase contracts. This product should not be combined with other commercial waste for disposal.



Caution: This is a Class A product. In a domestic environment this product may cause radio interference in which the user may be required to take adequate measures.

1 OVERVIEW

1.1 Introductions

TP40 is a thermal receipt printer, featured by high print quality, high print speed, high stability, etc. It can be used in commercial POS system, food industry and occasions which need real-time field print receipts.

TP40 can connect with other equipment through serial, USB and cash drawer interfaces. And the printer drivers are available for the WINDOWS XP/WINDOWS 7/WINDOWS 8/WINDOWS 10/Linux operating system.

1.2 The Main Features

- 1) Low noise
- 2) High print speed
- 3) Easy paper loading
- 4) Cash drawer interface

2 GETTING STARTED

2.1 Packing List

After receiving your printer, please check for possible shipping damage:

- 1) Inspect the outside of both the box and the printer for possible damage.
- 2) Check whether you have received the following accessories together with the printer, if there is any items missing, please contact your local dealer.



Printer



USB Cable



Power Cord



Power Adapter



Serial Cable



Quick Start Guide



CD



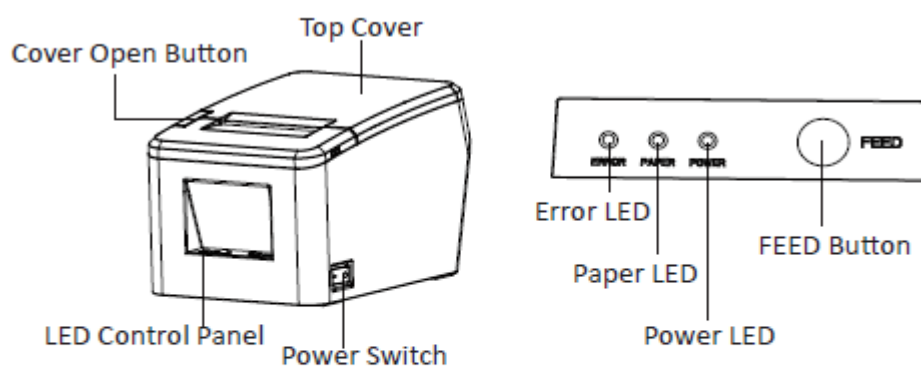
Paper Roll

Note:

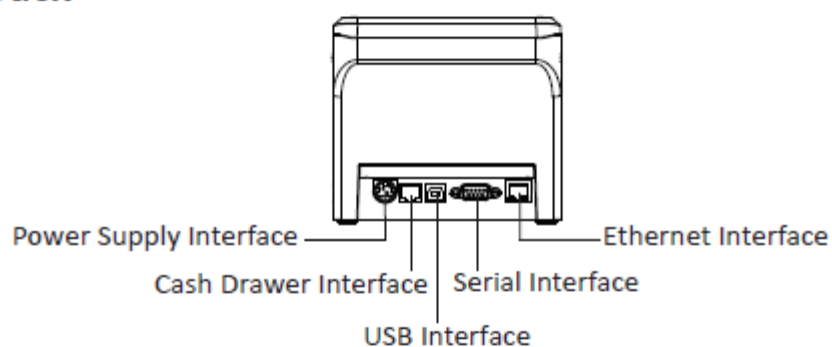
- ❖ *The power adapter and power cord vary by local and region.*
- ❖ *The packing materials are actually dependent on the order.*

2.2 Appearance

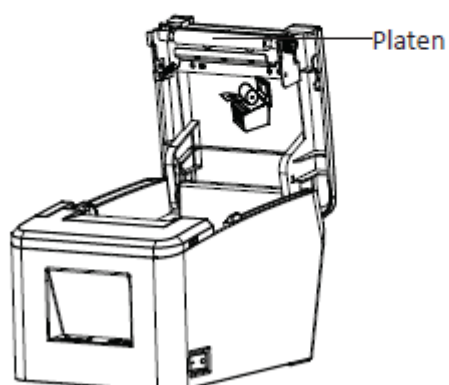
■ Front



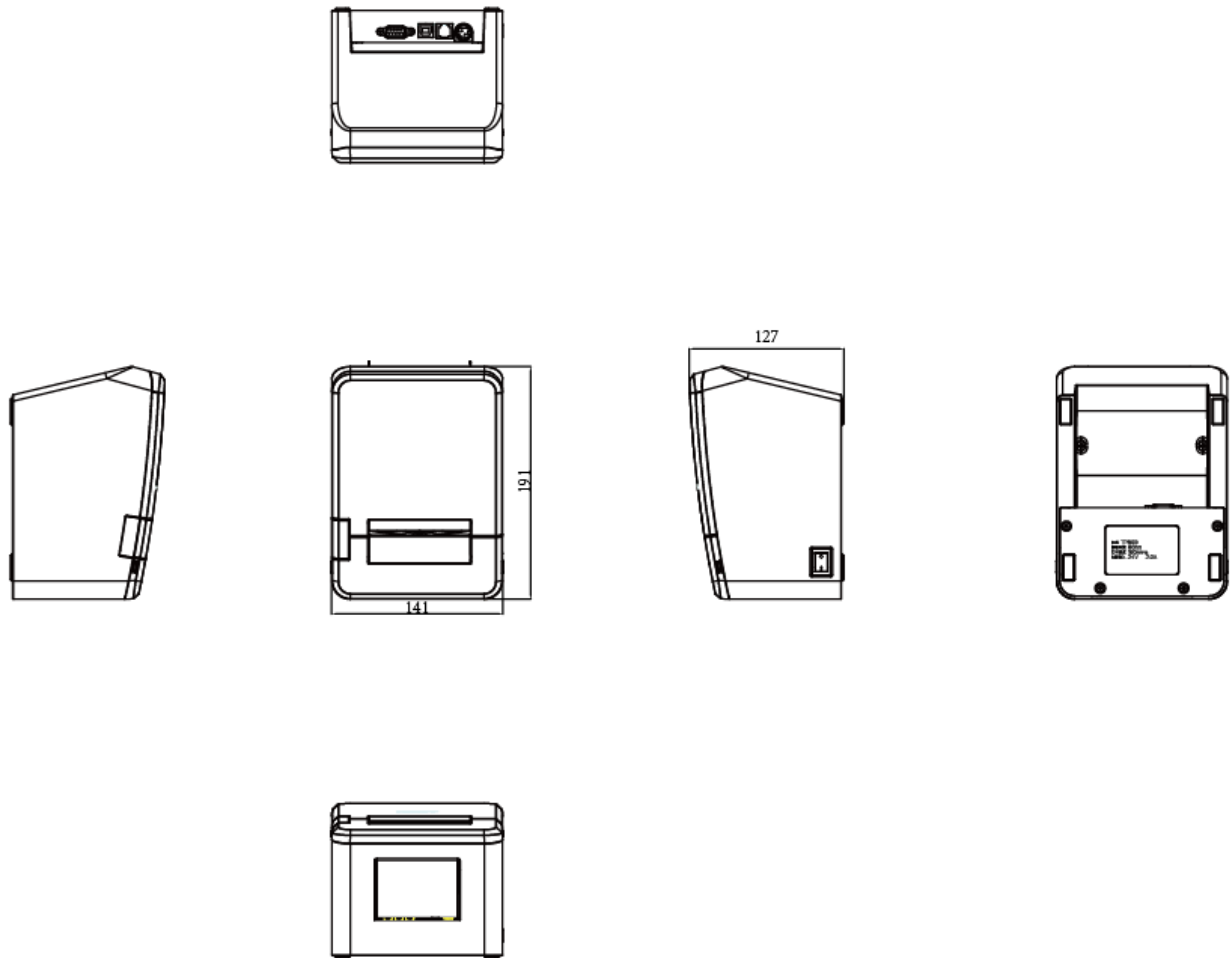
■ Back



■ Opening Top Cover



2.3 Dimensions



Unit: mm

3 SPECIFICATION

3.1 Printer Specification

Item		Parameter
Printing Parameter	Printing Method	Direct thermal line printing
	Resolution	203dpi (8dots/mm)
	Printing Width	72mm (576dots)
	Printing Speed	Max. 230mm/s
	Printing density	4 levels
	Printing Direction	Vertical and horizontal
Interface	Default	Serial, Ethernet, USB, Cash drawer, Bluetooth, Wi-Fi
	Optional	N/A
auto cutter		Partial Cut
Page mode		YES
Memory	RAM	2MB
	Flash	4MB
Character set	Font	GBK 24×24dots, ASCII 9×17, 12×24dots
	Code page	Optional international character sets : PC437(std.Europe), Katakana, PC850(Multilingual), PC860(Portuguese), PC863(Canadian), PC865(Nordic), PC857(Turkish), PC737(Greek), ISO08859-7(Greek), WPC1252, PC866(Cyrillic #2), PC852(Latin 2), PC858(Euro), KU42(Thai), TIS11(Thai), TIS18(Thai), PC720(Arabic), WPC775(Baltic Rim), PC855(Cyrillic), PC862(Hebrew), PC864(Arabic), ISO8859-2(Latin2), ISO8859-15(Latin9), WPC1250(Latin 2), WPC1251(Cyrillic), WPC1253(Greek), PC1254(Turkish), WPC1255(Hebrew), WPC1256(Arabic), WPC1257(Baltic Rim), WPC1258(Vietnamese), MIK(Cyrillic), PC755(Latin 2), Iran, Iran II, Latvian, ISO-8859-1(WestEur), ISO-8859-3(Latin 3), ISO-8859-4(Baltic), ISO-8859-5(Cyrillic), ISO-8859-6(Arabic), ISO-8859-8(Hebrew), ISO-8859-9(Turkish), PC856, PC3848(ABICOMP), MONGOLIAN, VISCII
Structure		Mechanism, Control board, Easy load paper

Item		Parameter
CPU		32-bit RSIC processor
Graphics		Support bitmap printing with different density and user defined bitmap printing (Max. 40K for per bitmap, and Max. 256K for total)
Barcode	1D	UPC-A, UPC-E, EAN8, EAN13, CODE39, ITF, CODEBAR, CODE128, CODE93
	2D	QR code, PDF417
Detection	Sensor	Paper out, Cover Open
Power supply	Input	AC100V-240V 50-60HZ
	Output	DC 24V±5%, 2.5A,
Paper	Paper Loading	Front loading, Up loading, Easy loading
	Paper Type	Standard thermal paper
	Paper Width	80±0.5mm, maximum label roll OD is up to 83mm
	Paper Thickness	0.056~0.13mm
	Paper Roll Diameter	83mm Max.
Condition	Operating	0~45°C/10~85%RH
	Storage	-20~60°C/10~90%RH
Reliability	TPH Life	150km
	Cutter Life	1,500,000 times
	Motor Life	360 , 000 hours
Emulation		ESC/POS
Packing Information	Dimensions	141*191*127mm (W*D*H)
	Accessories	Power adaptor, RS232 cables,CD, Quick Guide, paper roll
Driver		Windows (Win10/POSReady/Win8/Win7/Vista/XP/2000), Linux, OPOS
Certifications		CCC, FC, CE
Eco Features		Paper saving mode, Energy Star qualified

3.2 Printing Media Specification

3.2.1 Continuous Thermal Paper Specification

Paper Type : Standard thermal paper

Paper Width : 80 ± 0.5 mm

Paper Outer Diameter : Max. 83 mm

Paper Thickness : 0.056~0.13mm

3.2.2 Notices

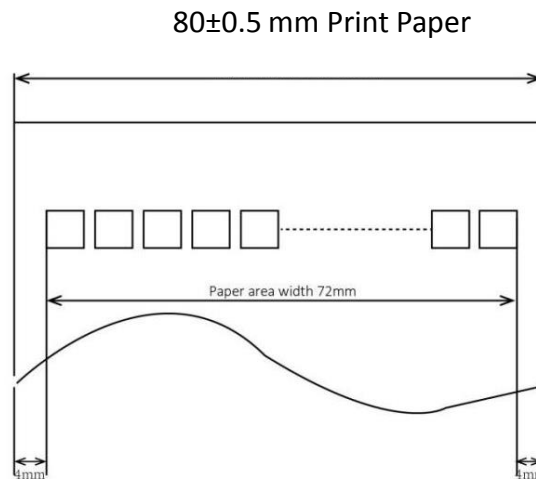


Notes:

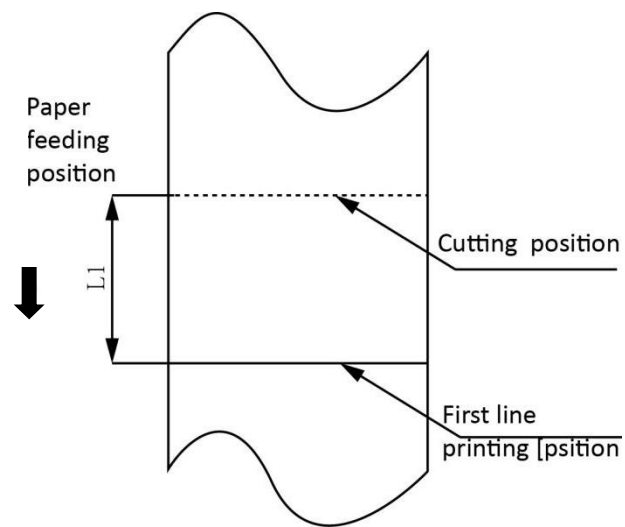
- Please use the recommended thermal paper or same quality paper, otherwise it will influence the printing quality and decrease the thermal printer head life.
- Don't stick the paper on the core of paper roll.
- If the thermal paper is polluted by chemical or oil, the thermal paper heat sensibility decreases, which will influence the printing quality.
- Don't use finger nail or hard articles to touch the surface of thermal paper, otherwise it will cause color fading.
- When the environment temperature is higher than 70°C, the thermal paper color will fade, so pay attention to the influence of temperature, humidity and sunlight.

3.3 Printing and Cutting Position

3.3.1 Printing position



3.3.2 Cutting Position

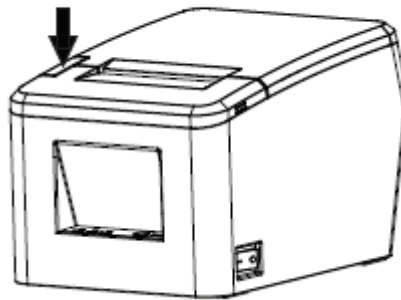


Type	Paper Cutting Position(L1)
TP40	8.5mm

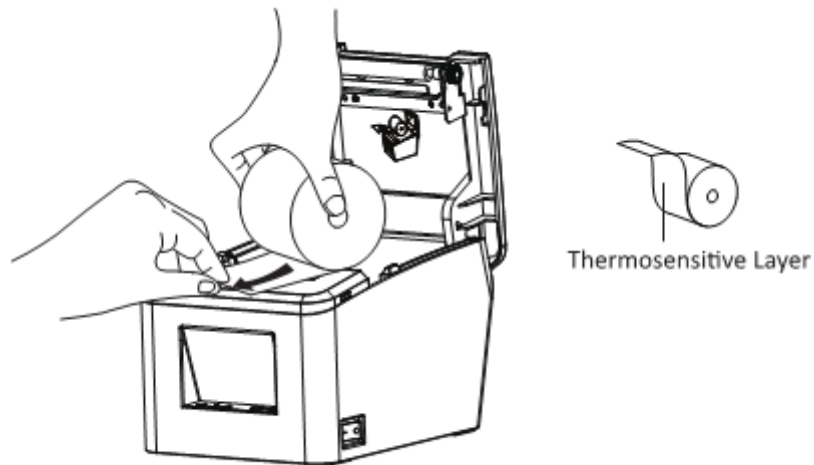
4 INSTALLATION AND USAGE

4.1 Media Loading

- 1) Press the cover open button to open the top cover.
- 2) Remove the used roll paper core, if any.



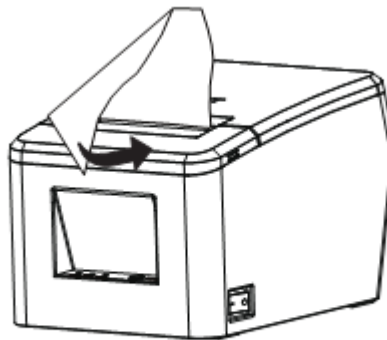
- 3) In the correct direction of the roll paper, insert the paper.



- 4) Pull out some roll paper, and close the top cover.

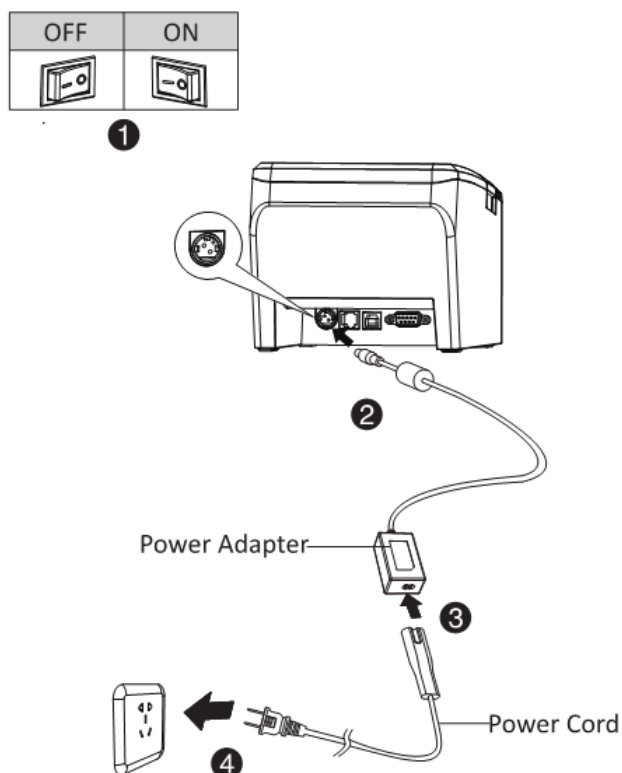


- 5) Tear the extra paper of the printer.



4.2 Power Connection

- 1) Make sure the printer power is turn off.
- 2) Connect power adapter with printer
- 3) Connect power adapter with power cord.
- 4) Plug the other side of power cord into the socket outlet.



Notes :

- ▶ Please only use the power adapter are recommended by supplied or equivalent products.
- ▶ When disconnecting the power adapter plug, handheld plug connector housing, to avoid the pulling on the cable in force.
- ▶ Avoid drag the power adapter cable, otherwise it will damage the cables, causing fire and shock.
- ▶ Avoid put power adapter around a heating device, otherwise the cable may melt, causing fire and shock.
- ▶ If you do not use the printer in a long time, disconnect the power supply of printer power adapter.

4.3 Cash Drawer Connection

- 1) Make sure the printer's power switch is turned off.
- 2) Connect the cash drawer cable into the cash drawer interface on the rear side of the printer.



Warning:

Cash drawer interface can only be connected to a voltage of 24V cash drawer device (can not be connect to the phone line, etc.)

4.4 LED Indication

Function specification of indicated light and beeper.

Name	Status	Specification
POWER LED (Green)	ON	The printer work well.
	OFF	The printer powers off.
ERROR LED (Red)	Flash	The printer in an error state
	OFF	The printer in a normal state
PAPER LED (Red)	ON	The printer in paper out state
	OFF	The printer in a normal state

Description	POWER LED	ERROR LED	PAPER LED	Beeper
Cover Open	ON	ON	ON	"Beep ,Beep--,Beep"
No Paper	ON	ON	ON	"Beep, Beep, Beep"
Cutter Jam	ON	Flash	OFF	"Beep—, Beep—"



Notes:

The printer uses a thermistor to detect the temperature of the print head. If the temperature of print head is more than 65° C, printer will send a warning. If the temperature of print head is more than 80° C, printer will stop working until the temperature is less than 60° C.

4.5 Print Test

4.5.1 Print Self-Test

The self-test checks the printer's current settings, status and whether the printer has any problem.

- (1) Make sure the power is connecting and paper is loading properly.
- (2) Make sure the printer is off and top cover closes properly.
- (3) Pressing the paper feed button and power button simultaneously turns the printer on. The printer is ready to receive data as soon as it completes the self-test.

4.5.2 Printing of Windows Driver Program

- (1) Install the Windows Driver program. (Please refer to the Windows Driver Manual)
- (2) Please set the "Ports" as the type you use.
- (3) Use the Windows Driver Program to print out the "Print Test Page".

5 INTERFACES

TP40 supports serial interface, ethernet interface, cash drawer interface and USB interface.

5.1 USB

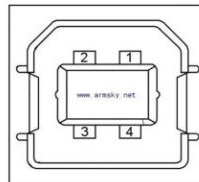


Figure 5-1

PIN NO.	Signal Name
1	VBUS
2	D-
3	D+
4	GND

5.2 Cash Drawer Interface

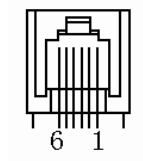


Figure 5-2

PIN NO.	Signal Name
1	FG
2	Drawer 1
3	DRSW
4	VDR
5	Drawer 2
6	GND

Electrical characteristics

- Driving voltage : DC 24V
- Driving current : Maximum 0.8 A (In 510 ms)

Detection signal for drawer status : “L” = 0 ~ 0.5 V “H” = 3 ~ 5 V

5.3 Power Port Definition

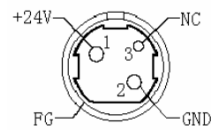


Figure 5.3

PIN NO.	Signal Name
1	+24V
2	GND
3	N.C
SHELL	F.G



Note :

- Strictly prohibit unplug the cable while the printer is power on.
- When arranging the line of communication, you have to avoid paralleling with the strong current.
- You have to use the shielded communication line.

5.4 Serial Interface

Printer TP40 serial interface is compatible with RS-232 standard, with 9 pin sockets.

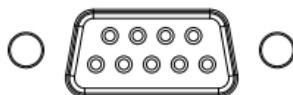
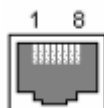


Figure 5.4

PIN NO.	Signal Name
1	-
2	TXD
3	RXD
4	-
5	GND
6	DTR
7	-
8	RTS
9	-

5.5 Ethernet Interface



PIN No.	Signal Name
1	TX+
2	TX-
3	RX+
4	n/c
5	n/c
6	RX-
7	n/c
8	n/c

NOTE: Ethernet interface can only be connected to a such interface of end device which has been isolated.

6 TROUBLESHOOTING

Your printer is very reliable, but occasionally problems may occur. This chapter provides information on some common problems you may encounter and how to solve them. If you encounter problems that you can not be resolved, contact your dealer for assistance.

6.1 Printer Not Working

Problem Description	Probable Reason	Solution
LED not light, printer not working	Printer no power	Connecting the power supply
	Printer not on	Turn on the printer
	Circuit board broken	Contact with the dealer

6.2 LED Indicator and Beeper Alarm

Problem Description	Probable Reason	Solution
Error LED always on and beeper alarms	Printer Cover open	Close the printer cover
Paper LED and Error LED always on and beeper alarms	Paper end	Reload the roll paper
Error LED blinks and beeper alarms	Thermal print head overheated	Turn the printer off and resume when it cools
	overvoltage	Print with specified voltage
	Low-voltage	Print with specified voltage

6.3 Troubles Occur During Printing

Problem Description	Probable Reason	Solution
Blurred printing or spot	Incorrect roll paper installation	Check if the roll paper is installed
	Unqualified roll paper	Use recommended thermal roll paper
	Dirty thermal head or print roller	Clean the thermal head or print roller
	Low print density	Increase the print density level
Paper Jam	Paper strike	Open the printer cover, check the paper path and remove jammed paper
Vertical print words missing	Dirty thermal head or print roller	Clean the thermal head or print roller
	Thermal head damaged	Contact your dealer for assistance

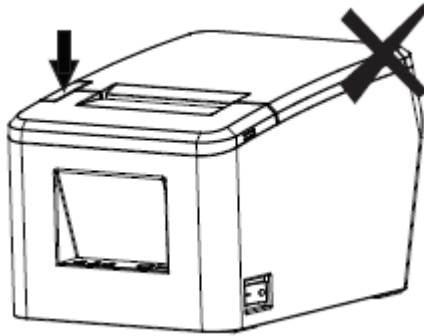
6.4 Problems Emerge During the Paper Cutting

Problem Description	Probable Reason	Resolution
Cutter jam, the movable cutter cannot back	Cutter abrasion, insufficient cutting	Replace the cutter
	Worm gear and worm wheel abrasion	Replace the worm gear and worm wheel
	Motor burnt	Replace the motor
	Paper scraps	Clean the paper scraps on the transmission system
Insufficient cutting	Cutter edge abrasion, paper too thick	Replace the cutter
Paper jam	Thermal printer head over heat	Reduce the density of printing
	Driving too fast	Reduce the printer speed to the limit of thermal printer head
	Wrong paper feeding position	Put the paper parallel with the paper mount and insert into the space between platen roller and the thermal printer head.

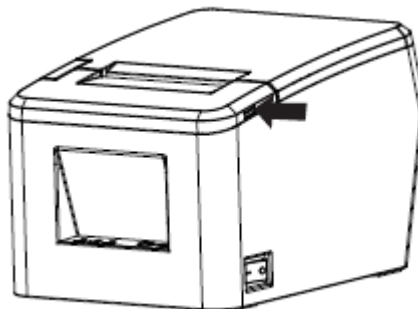
NOTE: The density of setting, please refer to "Utility Tool Instruction"

6.5 Remove Jammed Paper

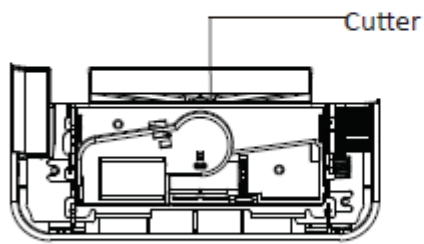
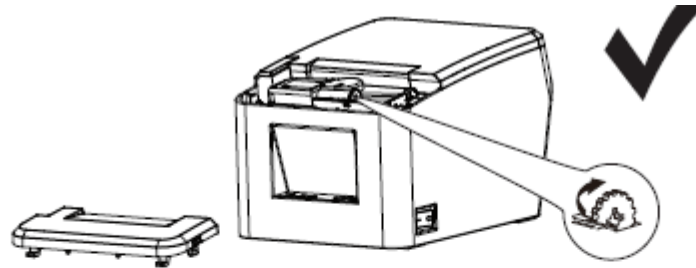
- 1) When a paper jammed, do not press the cover open button to avoid damaging the blade.



- 2) Fix the printer by one hand and press either side of the convex bars by the other hand.
Push up and open the front cover.

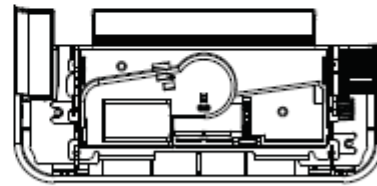


- 3) Please rotate the gear until the blade returns to its normal position, as shown in Figure 2.



When cutter jammed, the cutter does not retreat back and can be seen.

Figure 1



Cutter retreats back totally and cannot be seen.

Figure 2

7 PRINTER CLEANING AND MAINTENANCE

Print quality might be degraded by dust, foreign substance, adhesive substance, or other pollution materials stuck in the printer head or inside the printer.

When dirty, clean the print head as follows:

※ CAUTION

- Make sure to turn off the printer prior to cleaning.
- As the print head gets hot during printing, intending to clean the print head, turn the printer off and wait approximately 2~3 minute before commencement.
- When cleaning the print head, take care not to touch the heated portion of the print head.
Print Head is susceptible to damage from static electricity, etc.
- Take care not to allow the print head become scratched and/or damaged in any way.

7.1 Cleaning Head

- 1) Open the Printer Cover and then use the cleaning pen to clean the head in the direction from the center of the head to the edges.
- 2) After cleaning the head, do not use the printer until the alcohol used for cleaning evaporates completely (1~2 min) and the printer has completely dried.

7.2 Cleaning Sensors, Roller and/or Paper Path

- 1) Open the printer cover and then remove the paper.
- 2) Remove any dust or foreign substance using dry cloth or cotton swab.
- 3) Soak the cloth or cotton swab in alcohol for medical use and use it to remove adhesive foreign substances or other pollution materials.
- 4) After cleaning the parts, do not use the printer until the alcohol evaporates completely (1~2 min) and the printer has completely dried.

※ Clean the parts whenever print quality or paper detection degraded.

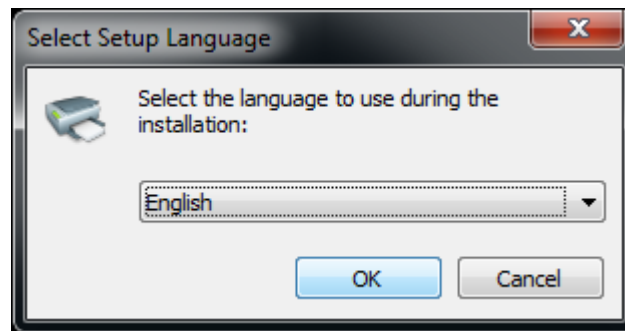
7 Utility Tool Instruction

ONIX Utility Tool is applicable to the following operating system:

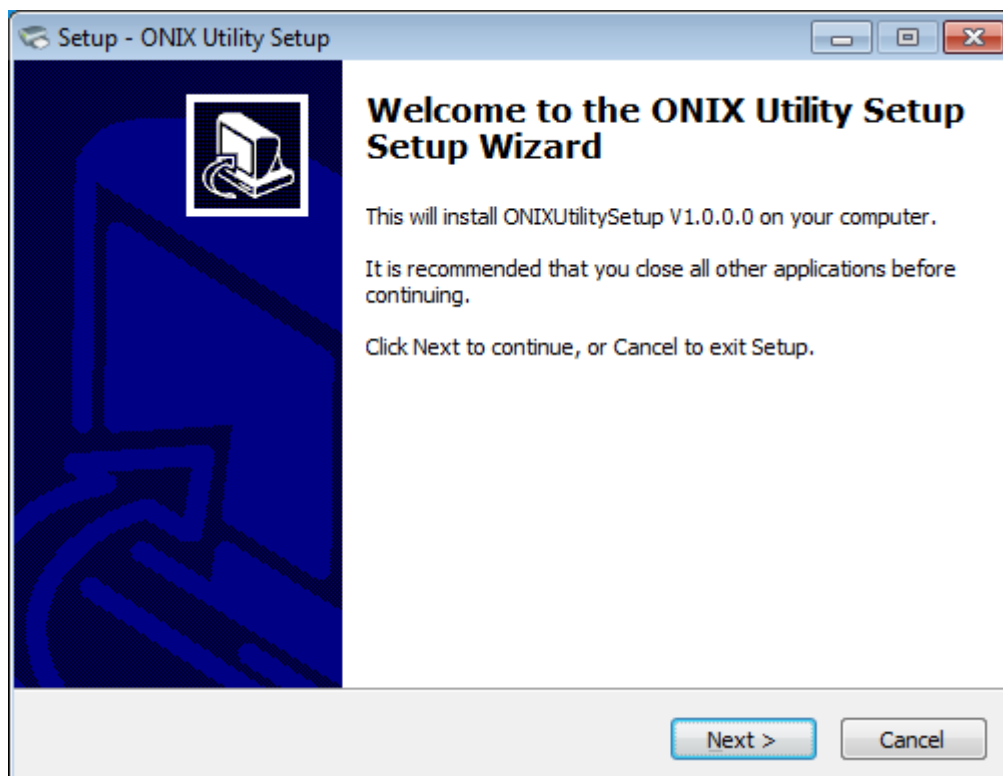
- Microsoft Windows 10 (32 bit/64 bit)
- Microsoft Windows 8 (32 bit/64 bit)
- Microsoft Windows SPI (32 bit/64 bit)
- Microsoft Windows XP Professional SP3 (32 bit)

7.1 Utility Tool Installation

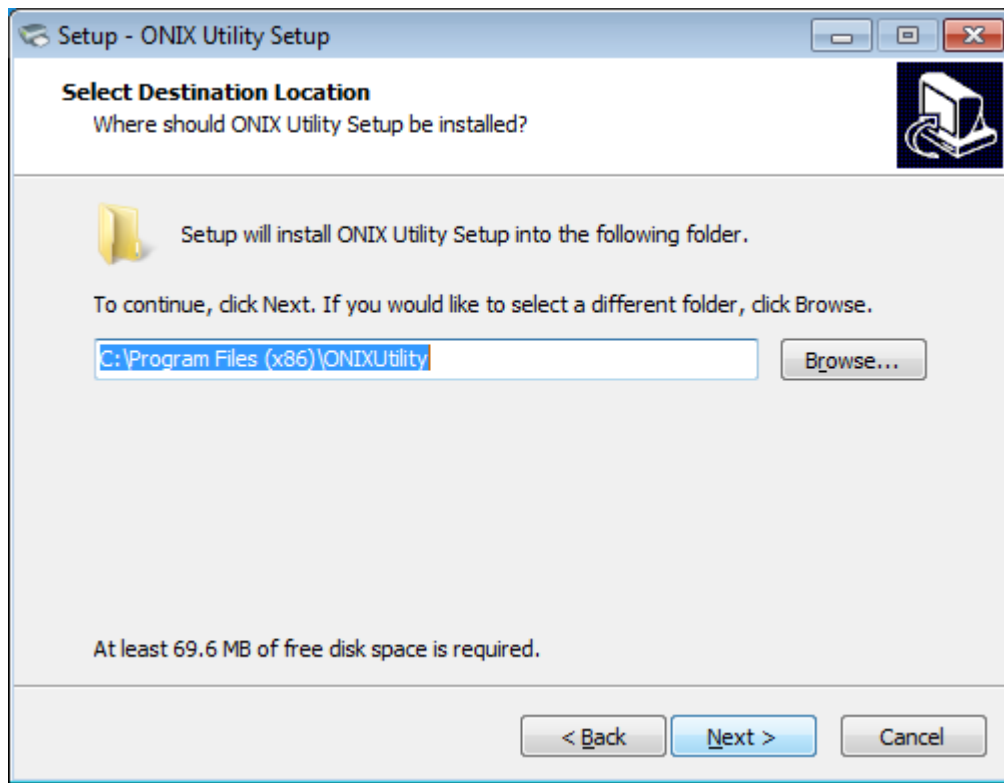
- 1) Open the installation package.
- 2) Choose “English” and click “OK”.



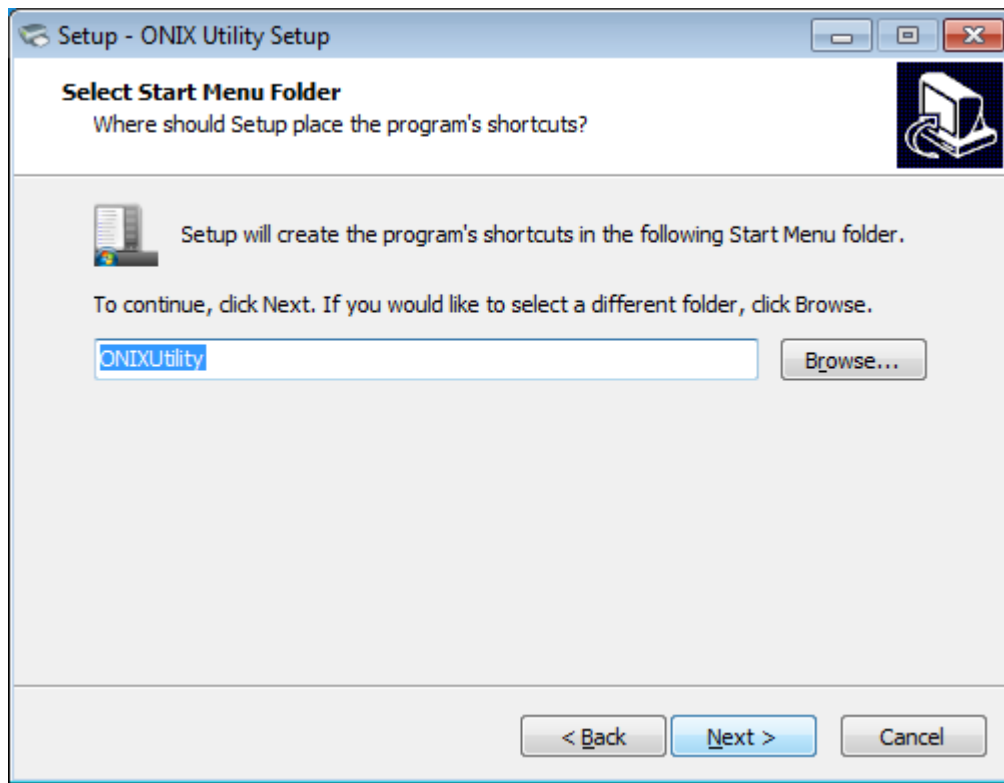
- 3) Click “Next”.



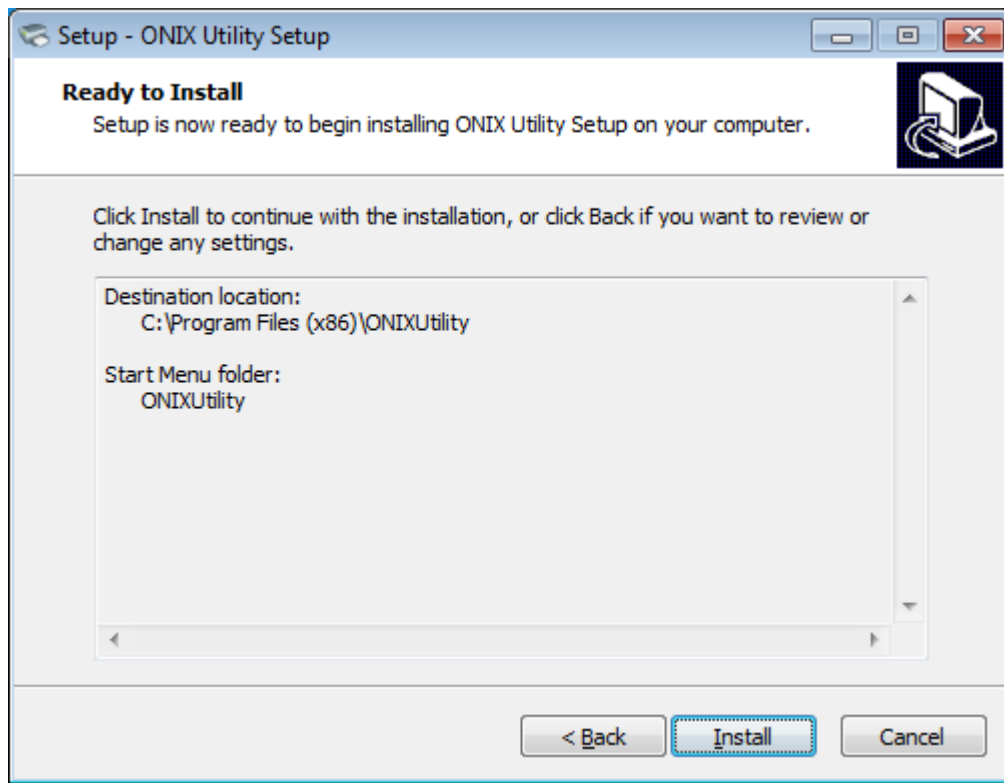
4) Select destination location to install the ONIX Utility Tool. Click “Next”.



5) Select start menu folder. Click “Next”.



6) Click "Install".



7) Click “Finish”. ONIX Utility Tool is installed successfully.



7.2 Utility Tool Using

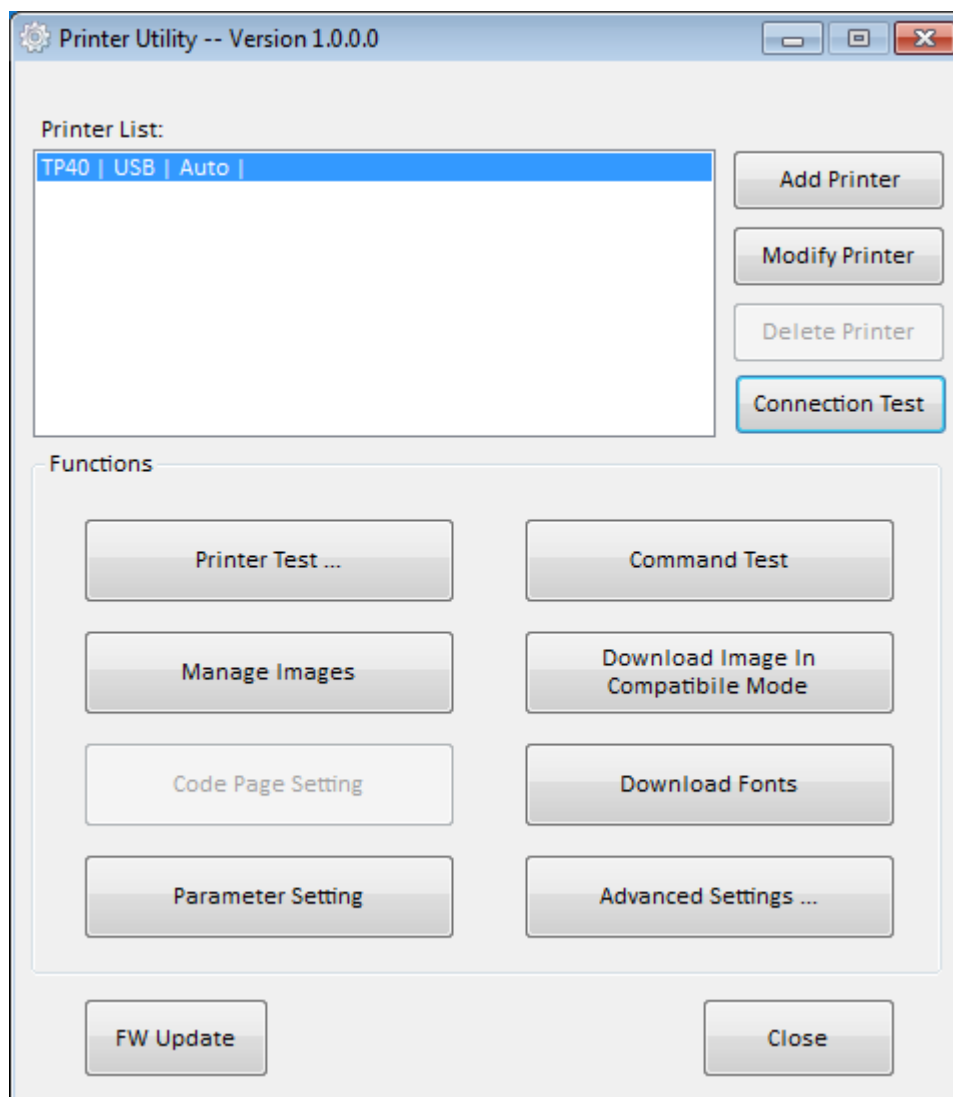
7.2.1 Add/Modify/Delete/Connection Printer



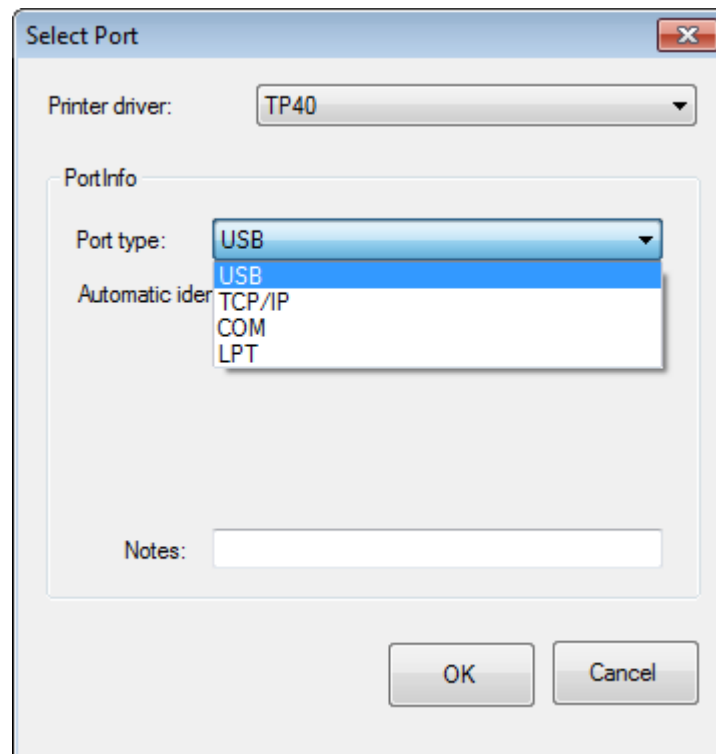
Warning: In different operating system, screen has a little difference. Please operate it according to the tips. Take TP40 (Windows 7) for example.

- **Modify printer**

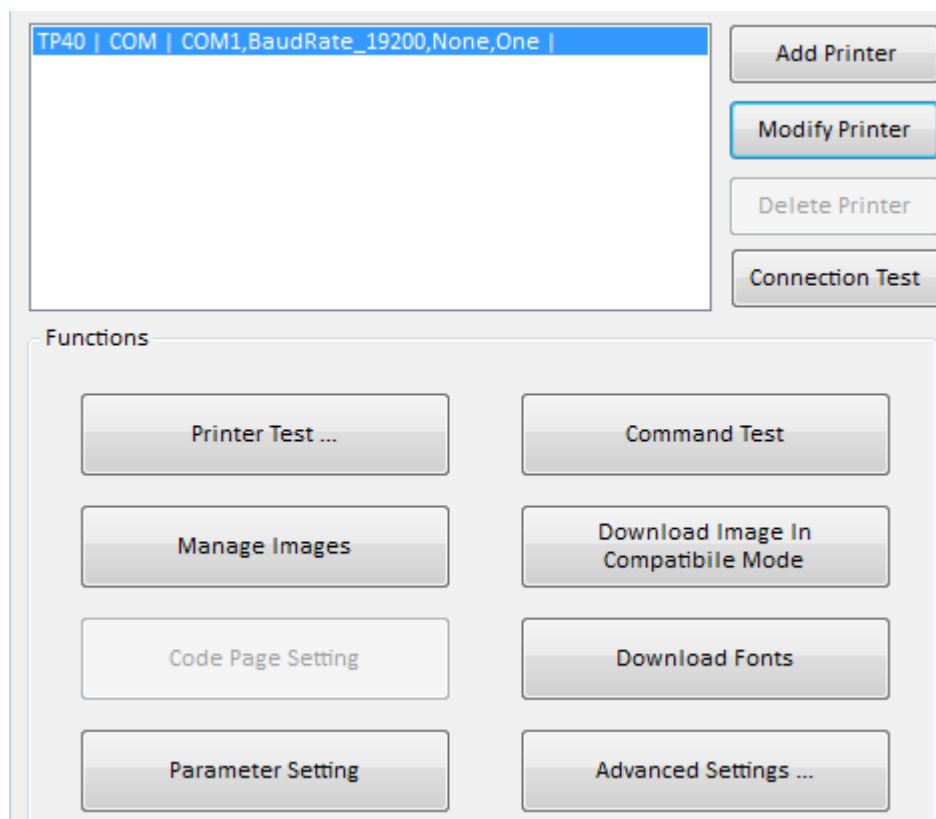
1) Choose the printer you want to modify in the list. Click “Modify Printer”.



2) Choose the new printer and new port. Then click “OK”.

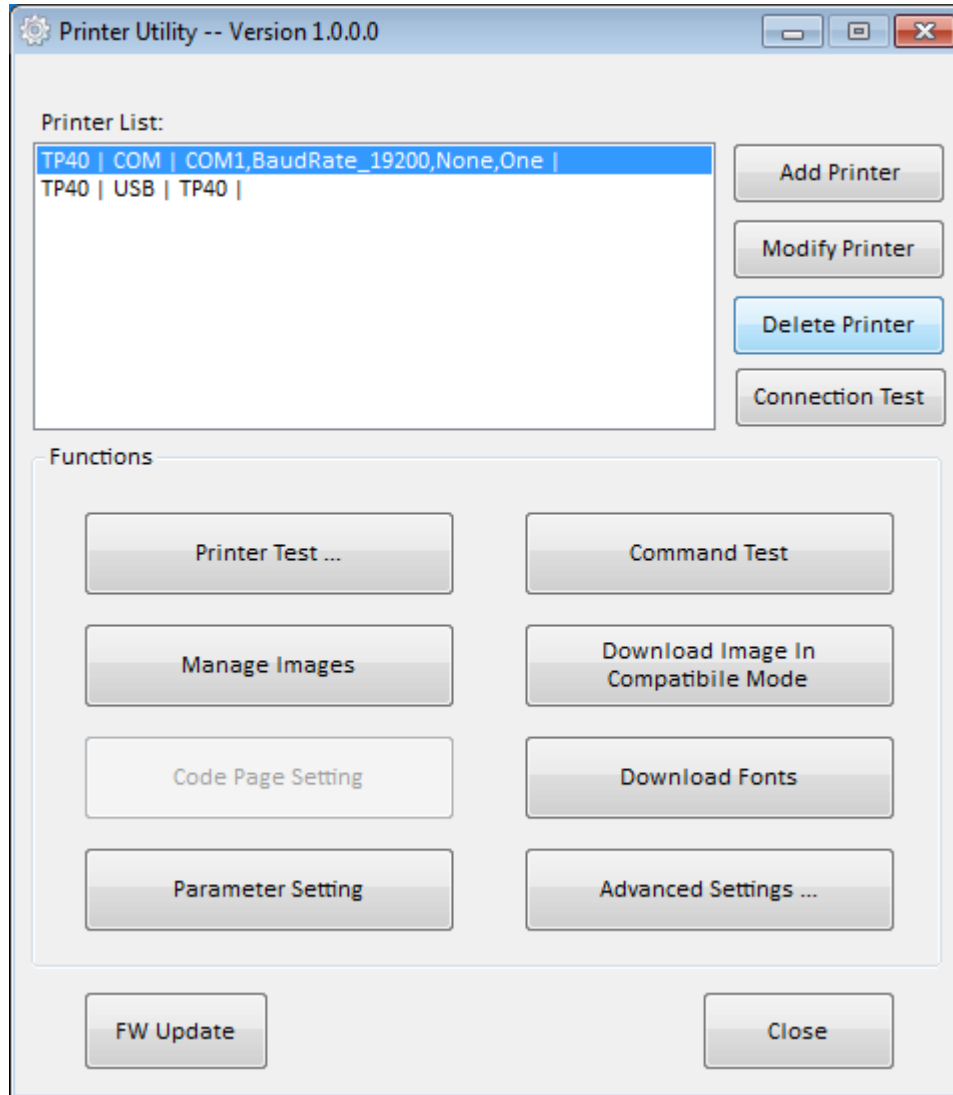


3) The new printer is added successfully.

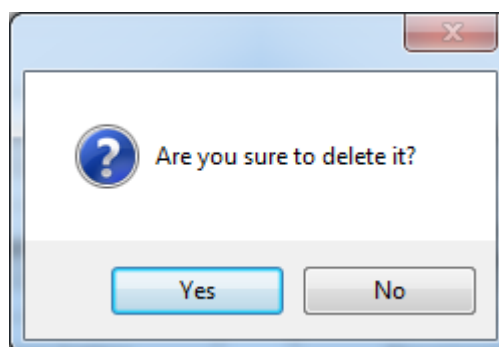


- **Delete printer**

1) Choose the printer you want to delete in the list and click “Delete Printer”.



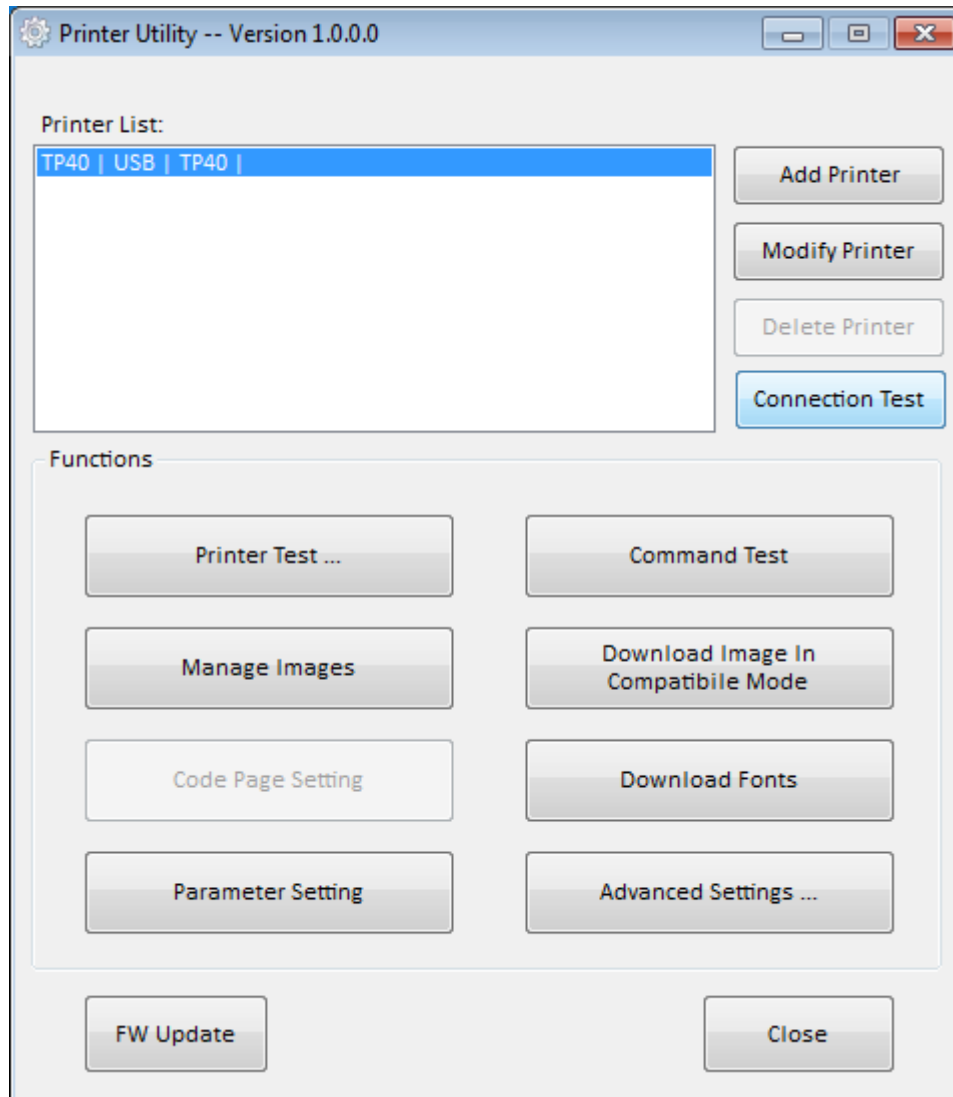
2) Click “Yes”, then the printer is deleted.



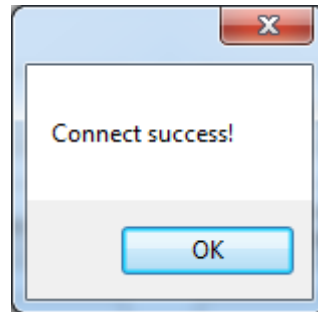
- **Connection Test**

Make sure printer is connected to computer and it is power on.

1) Choose the printer. Click “Connection Test”.



2) If the connection is successful, it will appear the following window. If the connection is unsuccessful, please connect the printer with computer.



Note:

- ❖ Make sure printer is connected with computer and power on.
- ❖ Make sure printer is loaded with paper.
- ❖ Before using the following function, carry out the "Connection Test" first.

7.3 Function

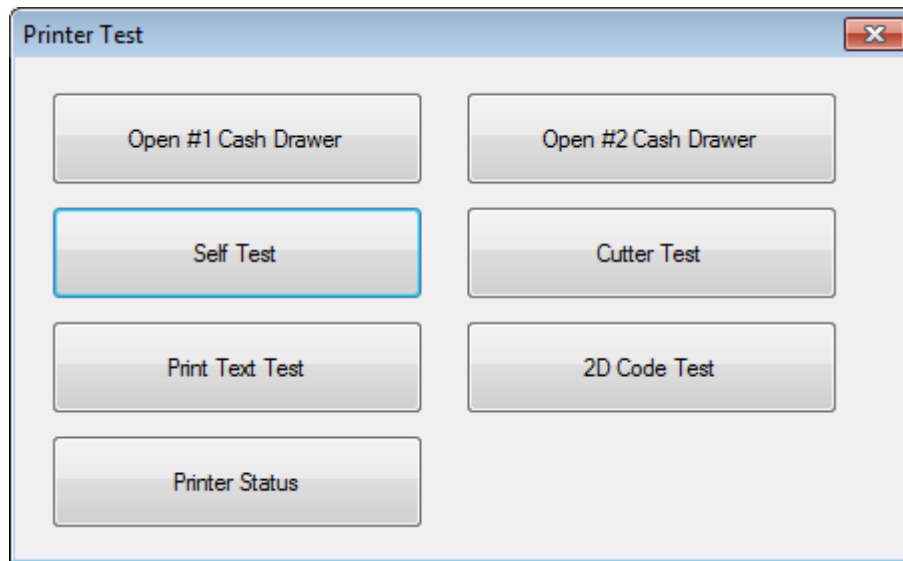
Printer Test contains the following items:

- ▼ Printer Test
- ▼ Common Test
- ▼ Manage Images
- ▼ Download Image in Compatible Mode
- ▼ Code Page Setting
- ▼ Download Fonts
- ▼ Parameter Setting
- ▼ Advanced Settings

7.3.1 Printer Test

7.3.1.1 Self Test

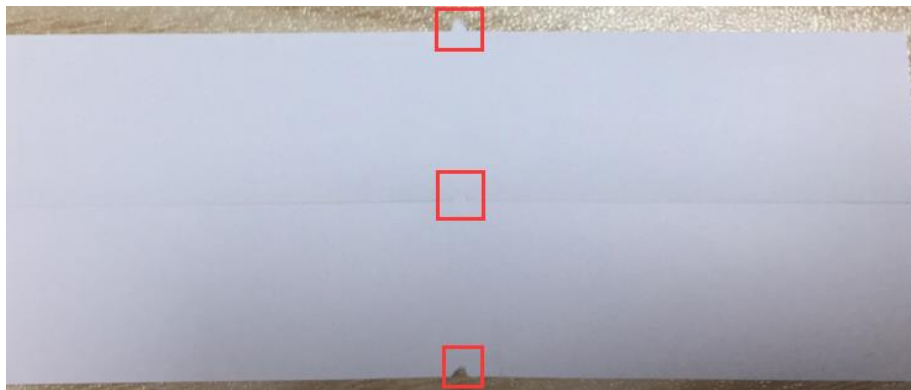
Click Configuration information to see if the printer will print properly.



7.3.1.2 Cutter Test

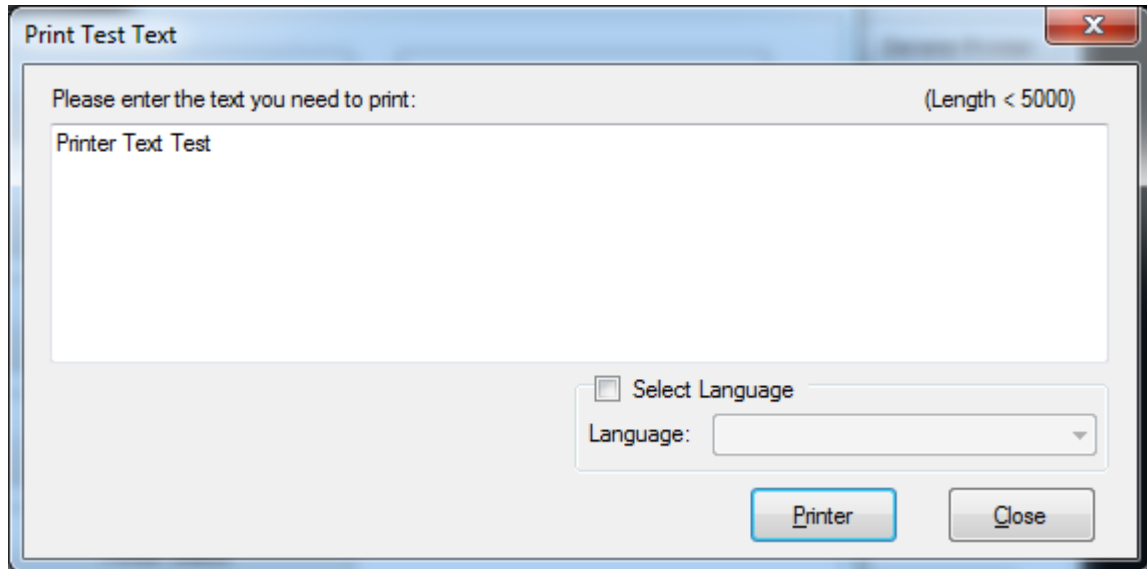
Click the cutter test and the paper will be cut automatically. Cutting method is half-cutting (half-cutting: Not all cut off, between the two sheets of paper to leave a connection point)

As shown in the figure:



7.3.1.3 Print Test Text

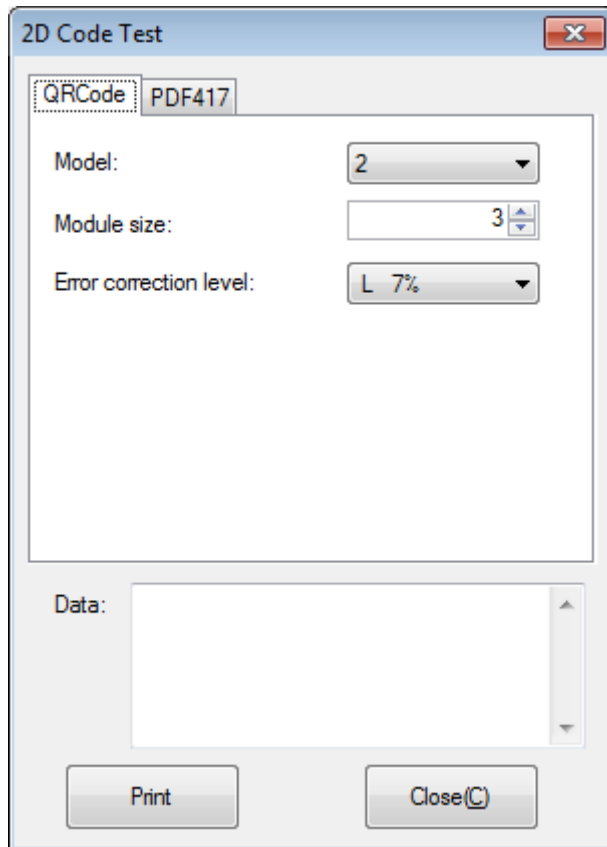
Click "Print Test Text", input the text you want to print. When you click "Print", the printer starts printing text content. Such as: Print Text Test.



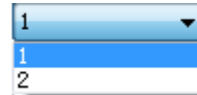
▲ **Note:** The language option in the lower right corner is checked according to the input text. (For example: The input is Simplified Chinese, the language is checked for Simplified Chinese, the printer prints the input text according to the setting options, and if you check other languages, the printer does not print the text)

7.3.1.4 2D Code

Click the QRCode mode.



▲ Model: 1~2

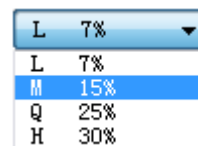


▲ Module size: 1~16

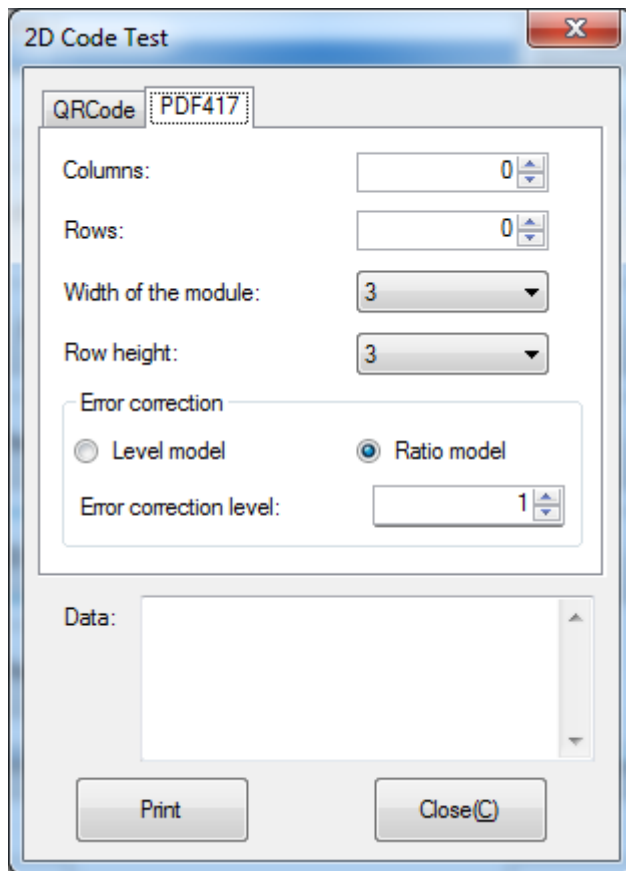
The larger the module value, the larger the printed QR code is, and the smaller the opposite.

▲ Error correction level: 7%~30%

The higher the error correction level, the more intensive the module graphics.



Click the PDF417 mode.

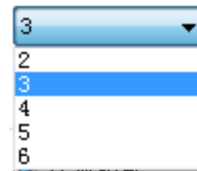


▲ Columns: 0~30

▲ Rows: 0~90

▲ Width of the module: 2~6

The larger the module value, the wider the width of the printed PDF417 barcode, and the smaller the opposite.



▲ Row height: 2~8

The larger the module value, the longer the printed PDF417 barcode, and the smaller the opposite.

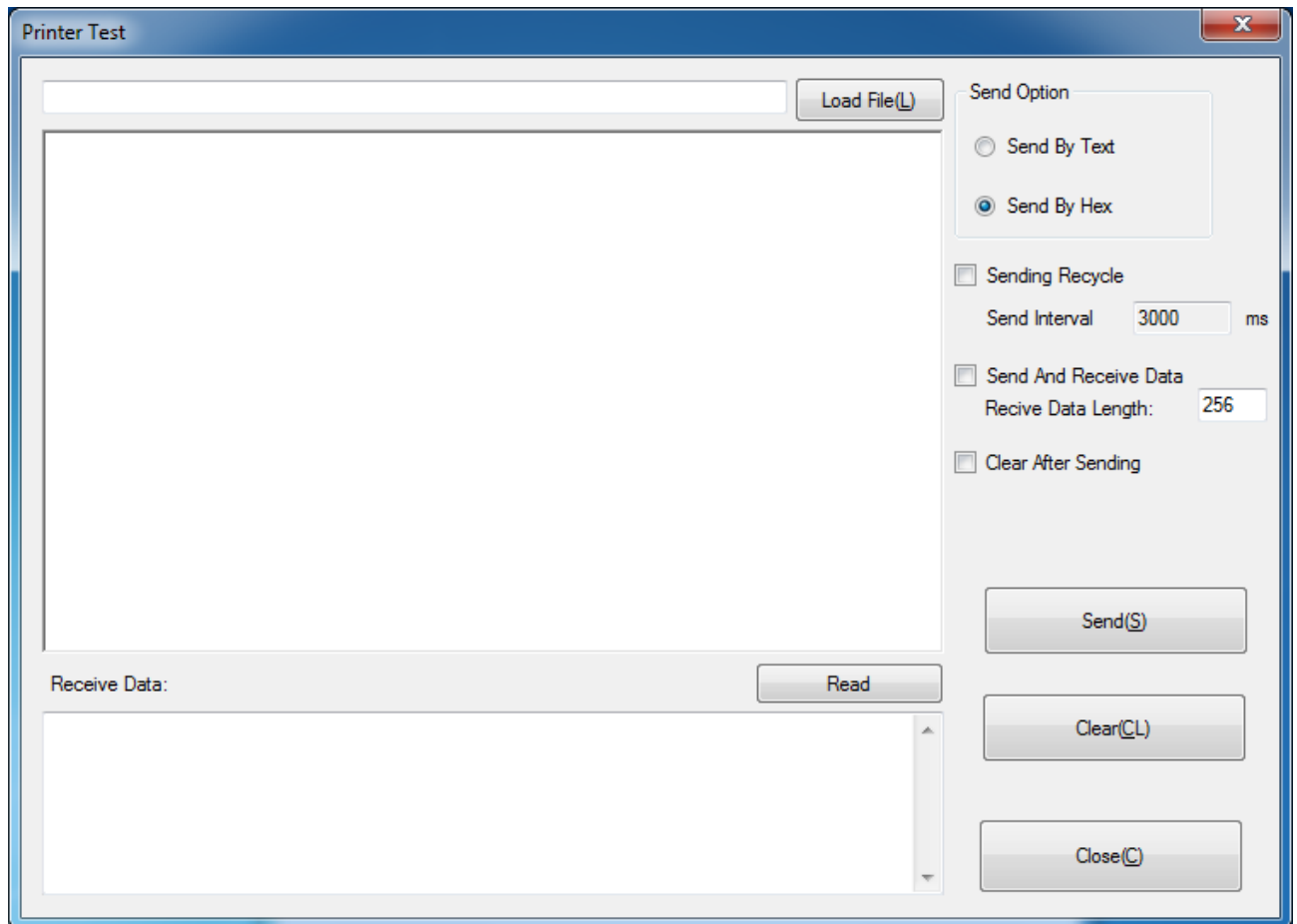
▲ Error connection level

7.3.2 Command test

In the command test, you can send command to the printer. Input text or hexadecimal data.

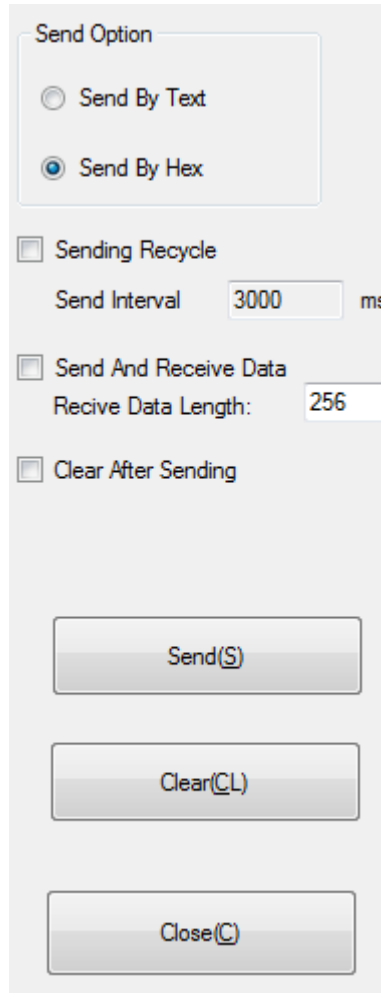
Select a file or enter a command in the input box.

- 1) Click “Send by Text”, input text content.



▲ Sending Recycle:

When the interval is set to 3000ms (you can set the interval as needed), then click “Send”, the printer starts to recycle printing. Click “Stop” to stop the recycle printing.



Send Option

☐ Send By Text

☒ Send By Hex

☒ Sending Recycle

Send Interval ms

☐ Send And Receive Data

Recv Data Length:

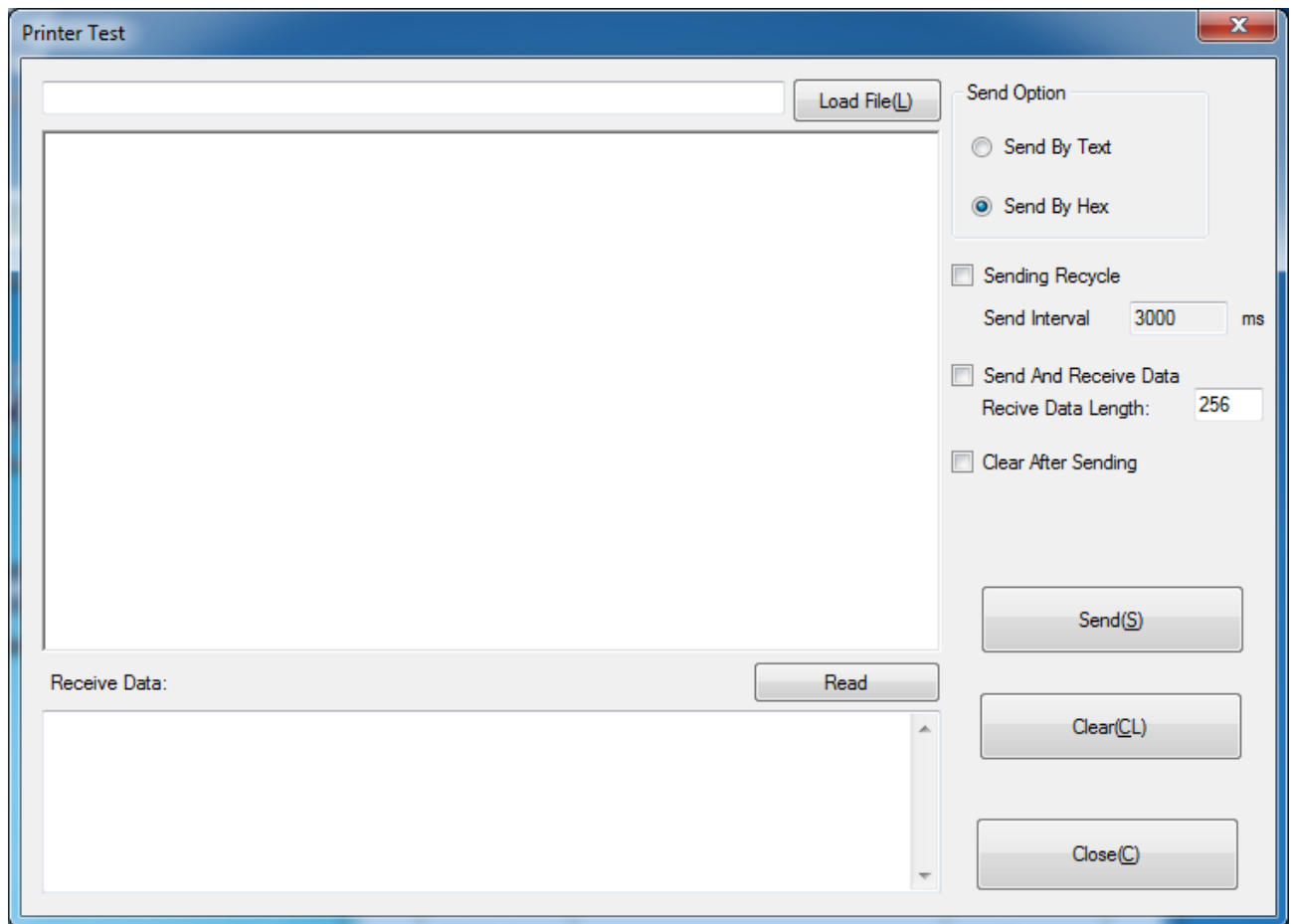
☐ Clear After Sending

Send(S)

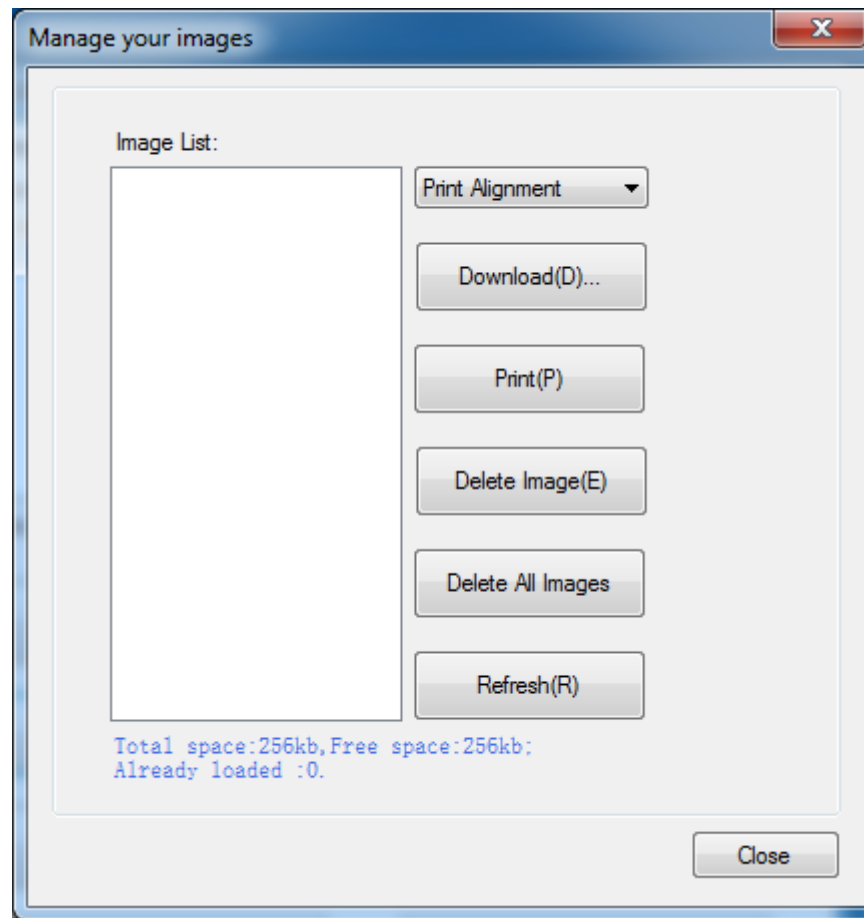
Clear(CL)

Close(C)

2) Click “Send by Hex”, input the content. (Convert text to HEX or send ESC command)

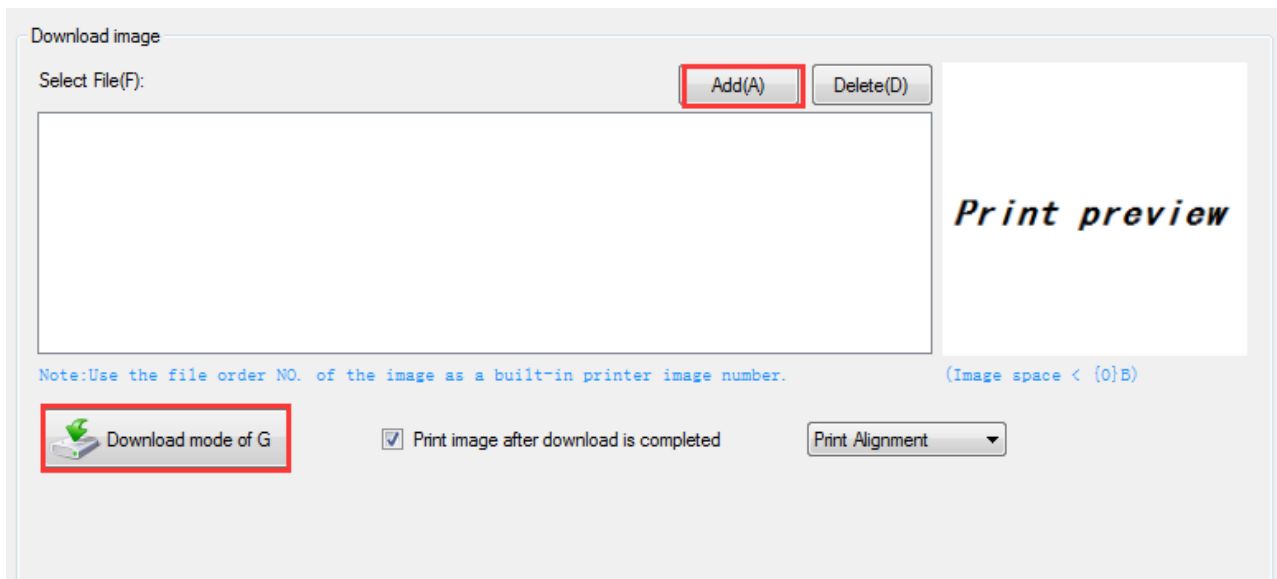


7.3.3 Manage Images

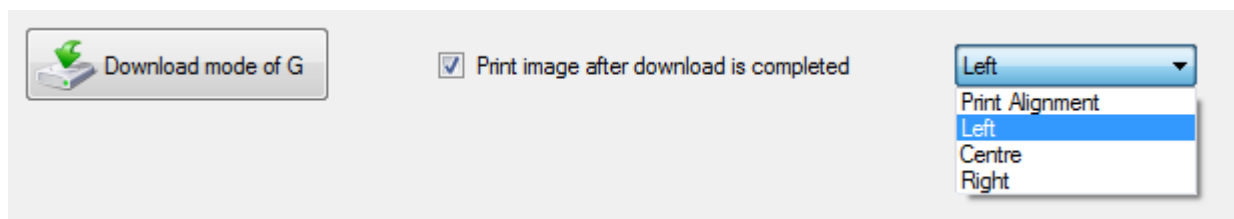


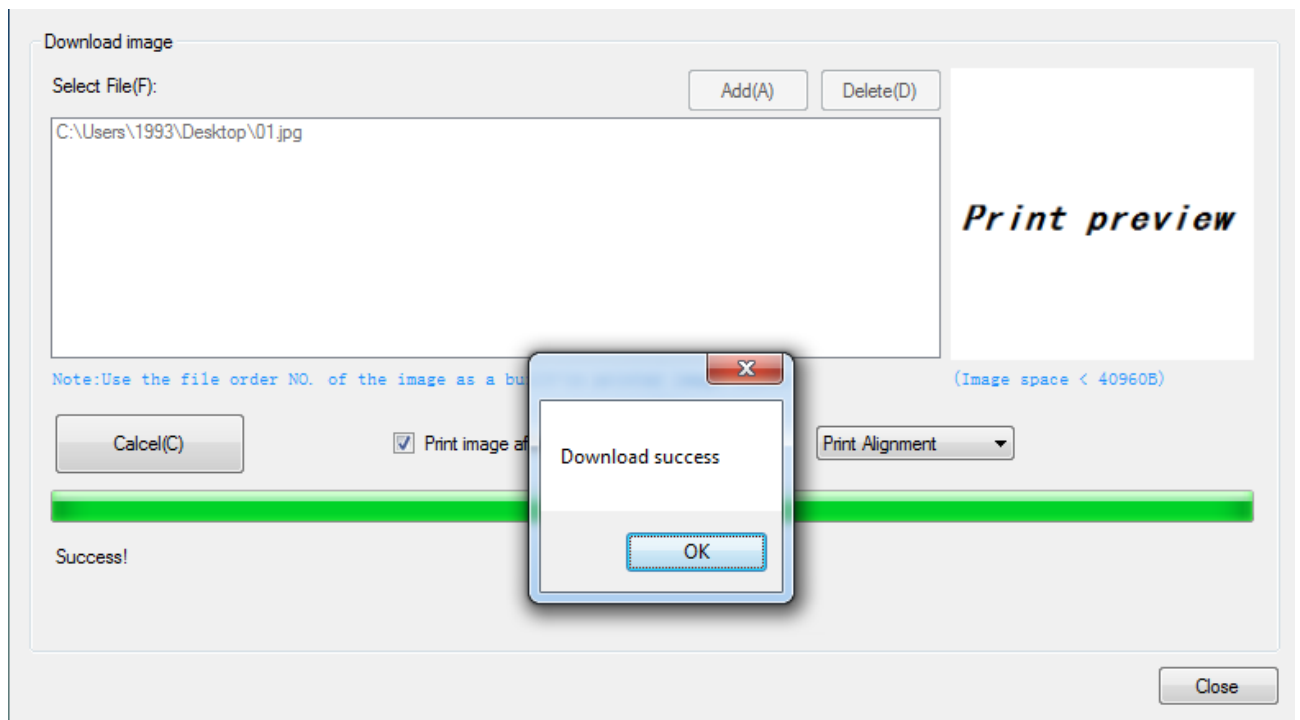
- Download image

Click "Download" to add the image, if you want to print the picture, set the print location before clicking "Download mode of G" to print the picture. (It is recommended to use a picture in BMP format)



- Select the print location, center, left, and right. (Such as, left print).

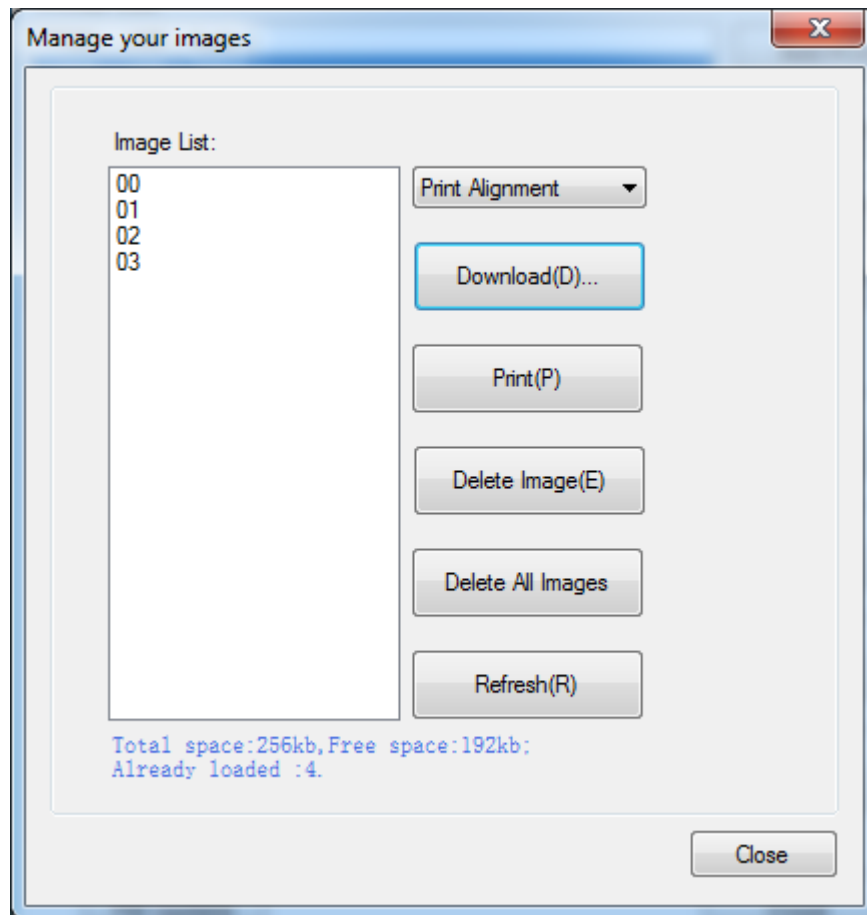




Note: Total memory 256K, each bitmap should be below 40K.

- Delete Image

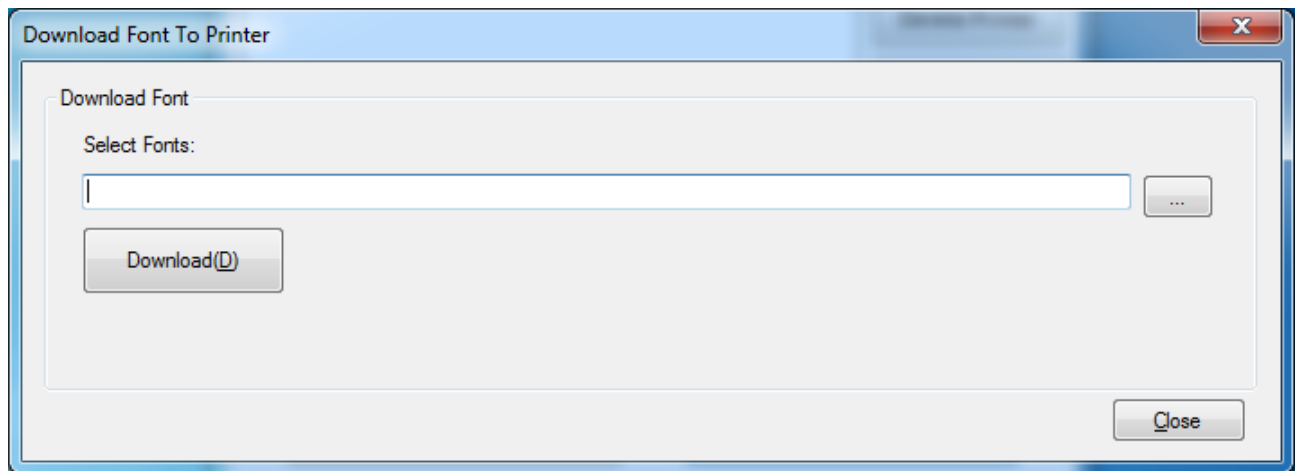
Note: each time click "Download mode of G", an image list number will be generated.



Click the image list, select "Delete selected image" will delete the image, click "Delete all Images", without clicking the list option to delete all the images in the list.

7.3.4 Download Font to Printer

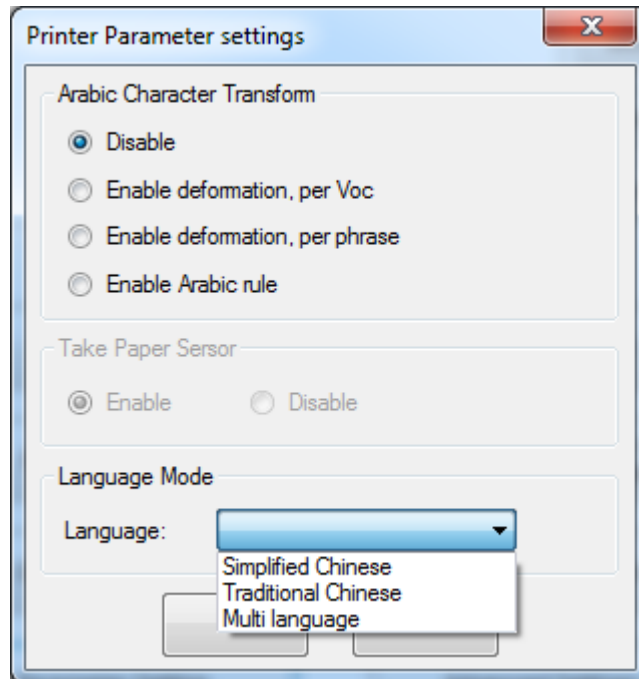
Select the font from the existing file and click "Download".



Note: After downloading the font successfully, you need to restart the printer before using it.

7.3.5 Parameter Setting

You can set Arabic Character Transform (for example: WPC1256).



7.3.6 Advanced Setting

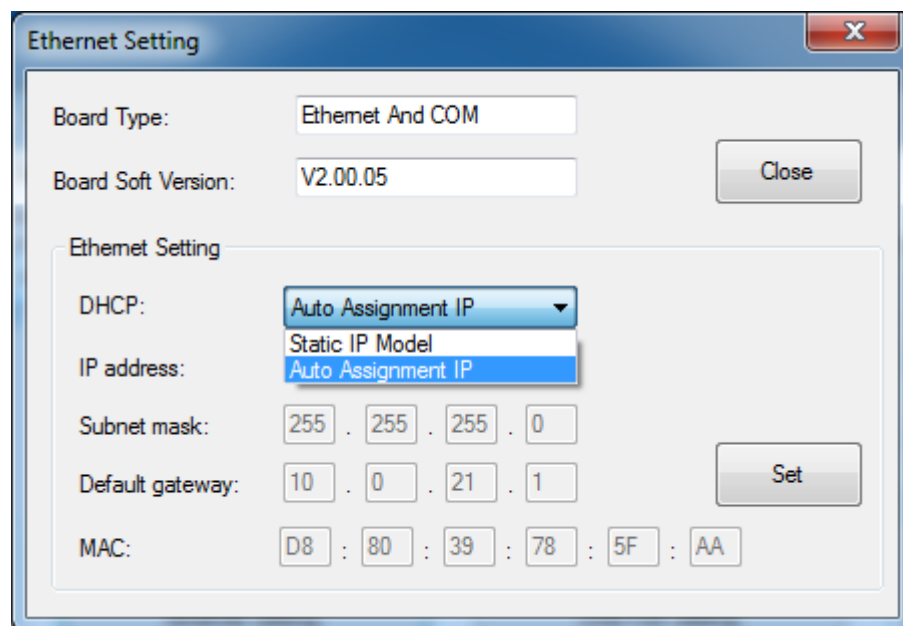
The advanced settings contain the following items.



7.3.6.1 Ethernet Setting

This mode is divided into “Auto Assignment IP” and “Static IP Mode”, select one of the modes to connect as needed.

Note: IP addresses can be obtained from the Self-test page.



- Static IP Mode

- 1) Change the printer IP address so that the printer IP address (such as: 192.168.0.33) is the same segment as the host IP address (such as: 10.0.21.89).

Here is the illustration:

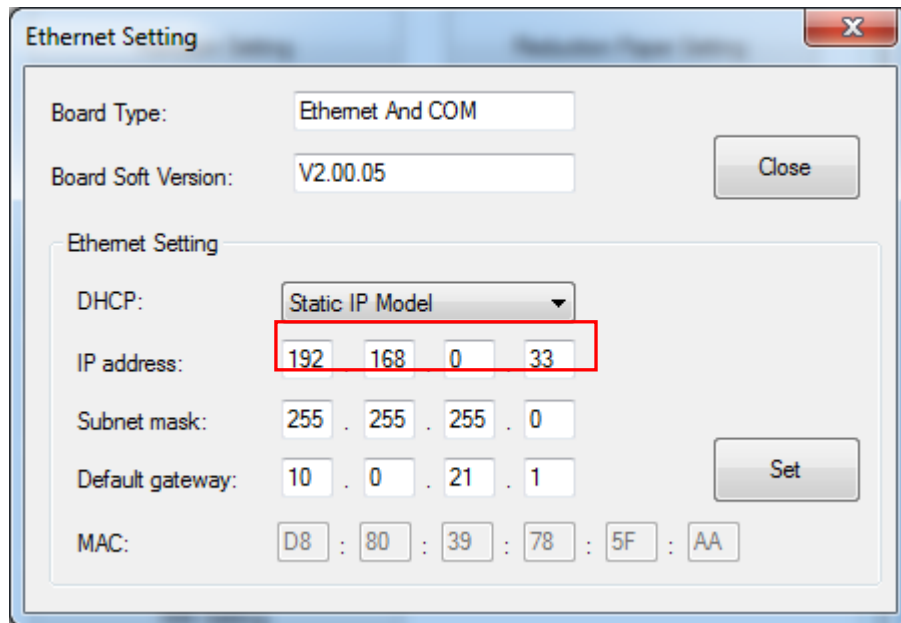


Figure ■ Printer IP Address

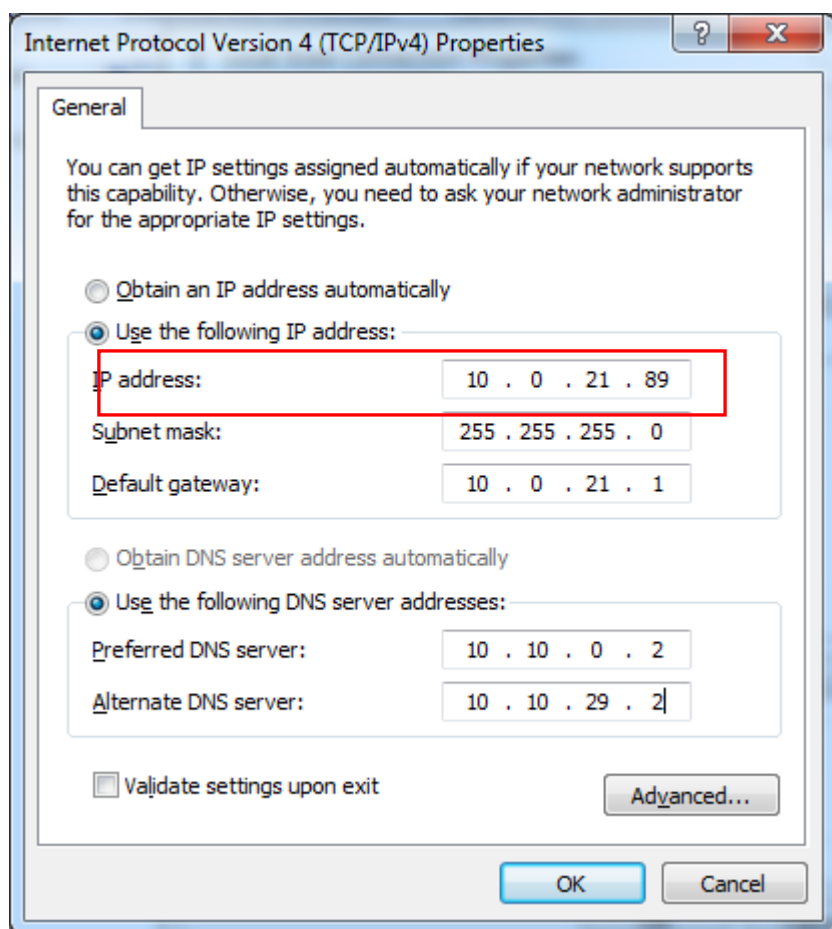


Figure ■ Host IP Address

2)Set the same network segment.

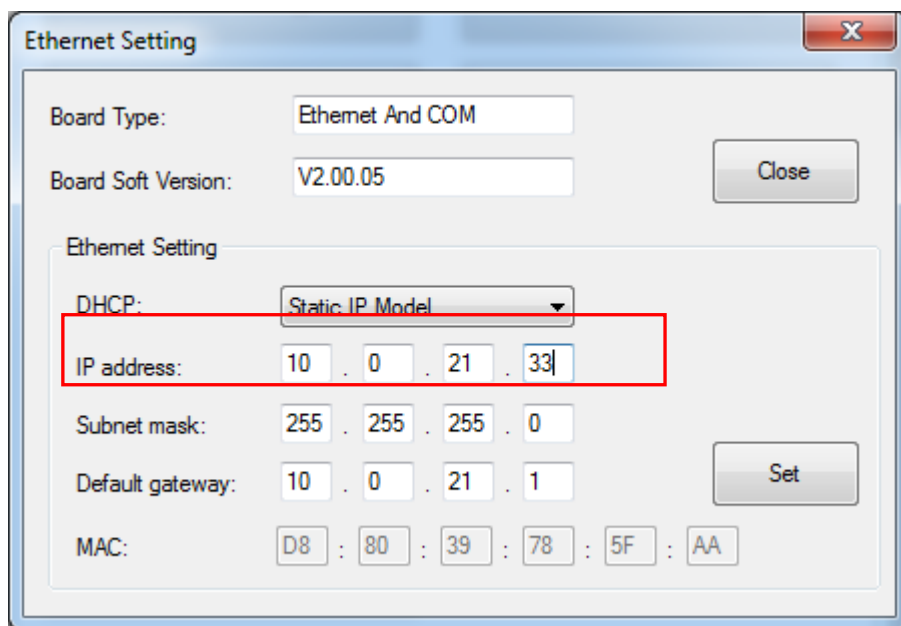
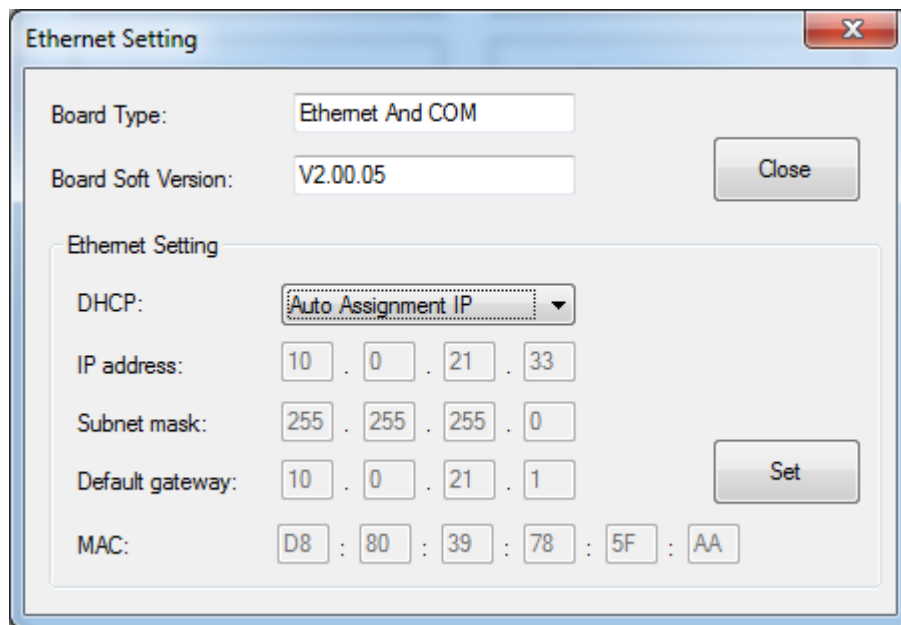


Figure ■ Printer IP Address

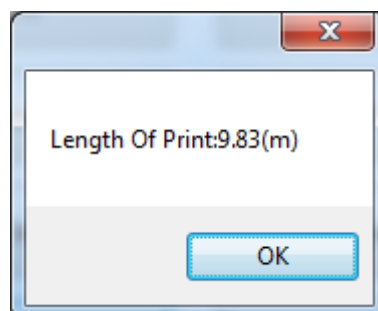
● Auto Assignment IP

This mode automatically assigns the IP address to the printer.



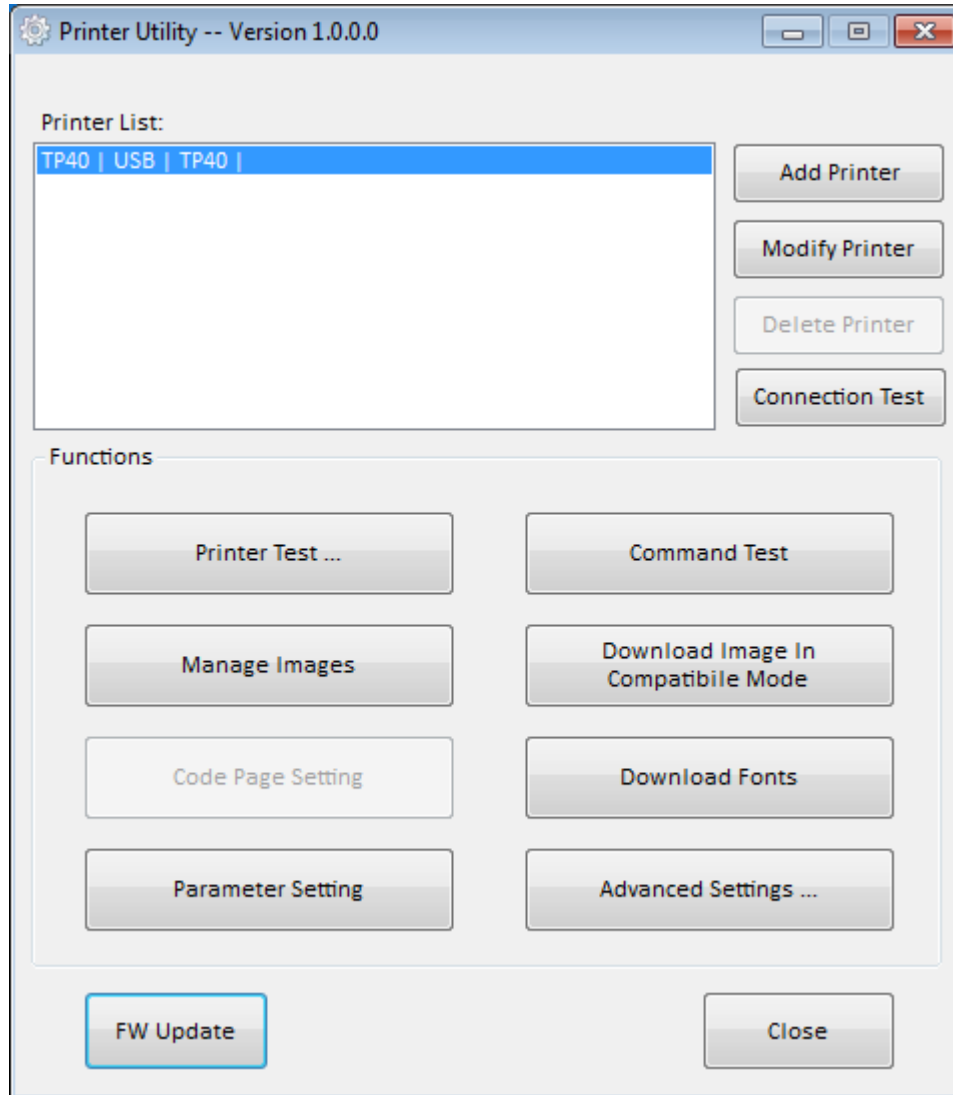
When the settings are complete, click "Write", then restart the printer.

7.3.6.2 Length of Print

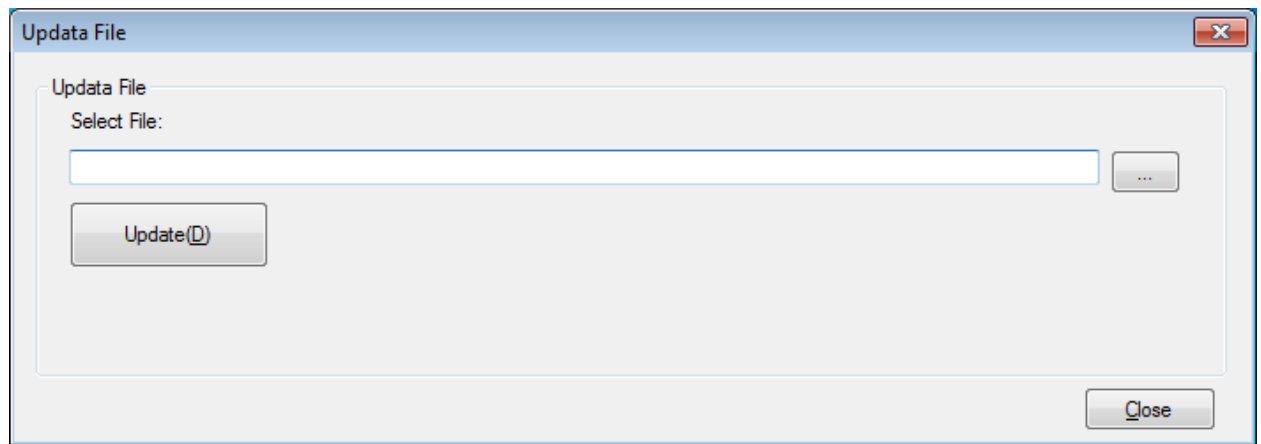


7.4 Firmware Update

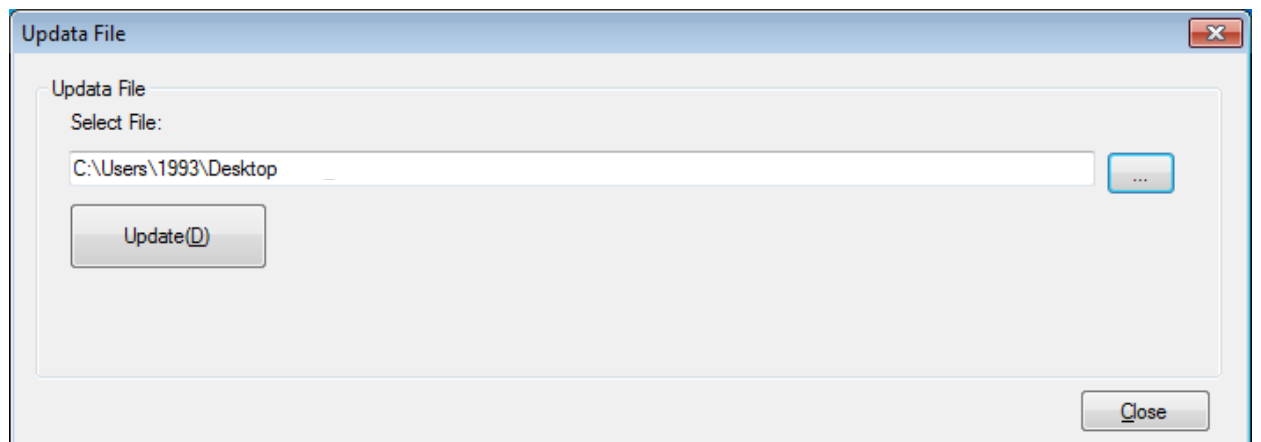
1)Click “FW Update”.



2) Select the Dfu file.



3) Click "Update". It will load twice



3) After the setting be finished, click "Leave DFU mode", then restart the printer.

8 WINDOWS DRIVER INSTRUCTION

8.1 Manual Information

This Windows Driver Installation Manual provides information on installation, detailed specifications, and usage of the printer's Windows Driver according to PC operating system (OS).

We maintain ongoing efforts to enhance and upgrade the functions and quality of all our products. As follows, product specifications and/or user manual content may be changed without prior notice.

8.2 Operating System (OS) Environment

The following operating systems are supported for usage.

- Microsoft Windows 10 (32 bit/64 bit)
- Microsoft Windows 8 (32 bit/64 bit)
- Microsoft Windows 7 SPI (32 bit/64 bit)
- Microsoft Windows Vista SP2 (32 bit/64 bit)
- Microsoft Windows XP Professional SP3 (32 bit)
- Microsoft Windows Server 2012(64 bit)
- Microsoft Windows Server 2008 R2
- Microsoft Windows Server 2008 SP2(32 bit/64 bit)
- Microsoft Windows Server 2003 R2 SP2(32 bit/64 bit)

8.3 Windows Driver Preparation

The Windows Driver is included in the enclosed CD.

The installation file name is POS Printer Driver-v-X.X.X.X.exe

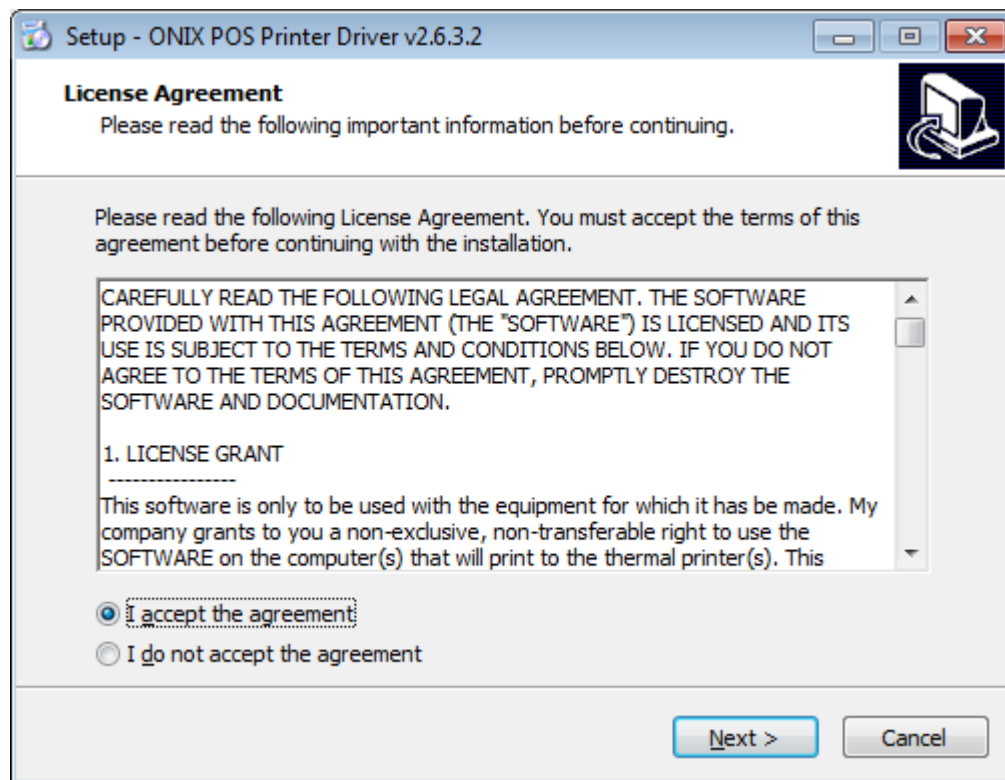
eg : POS80 Printer Driver-v-2.6.3.2.exe

8.4 Windows Driver Installation

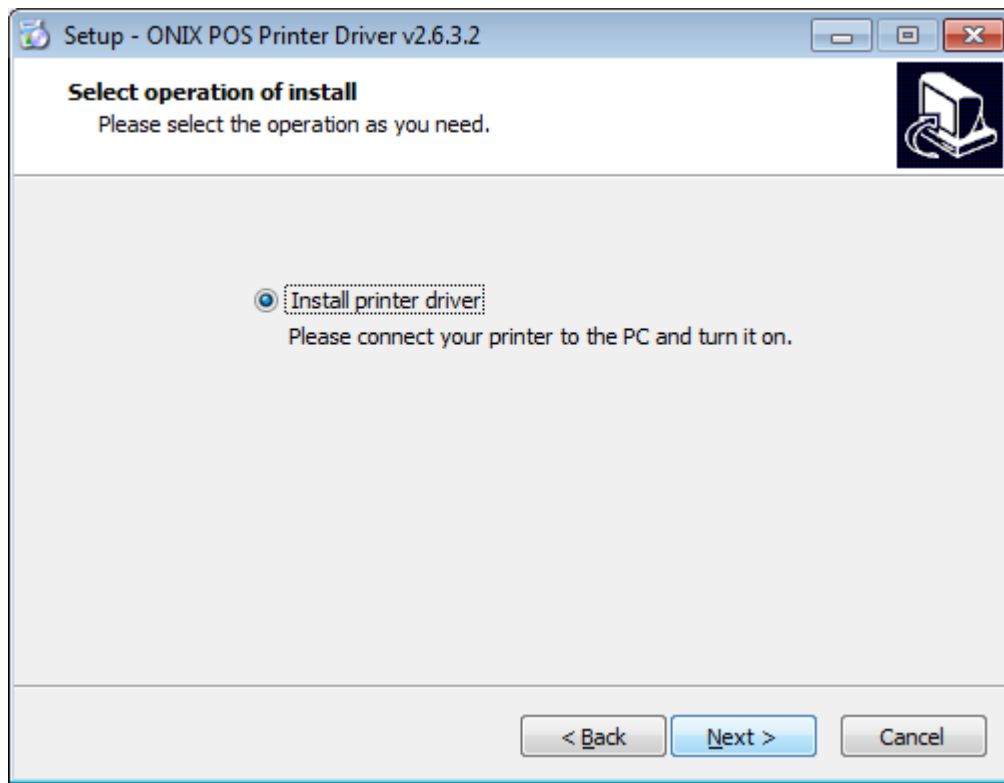
Warning:

Under different operating system, the screen has slight difference. Please operate it according to the tips. Take TP40 (Windows 7) as example.

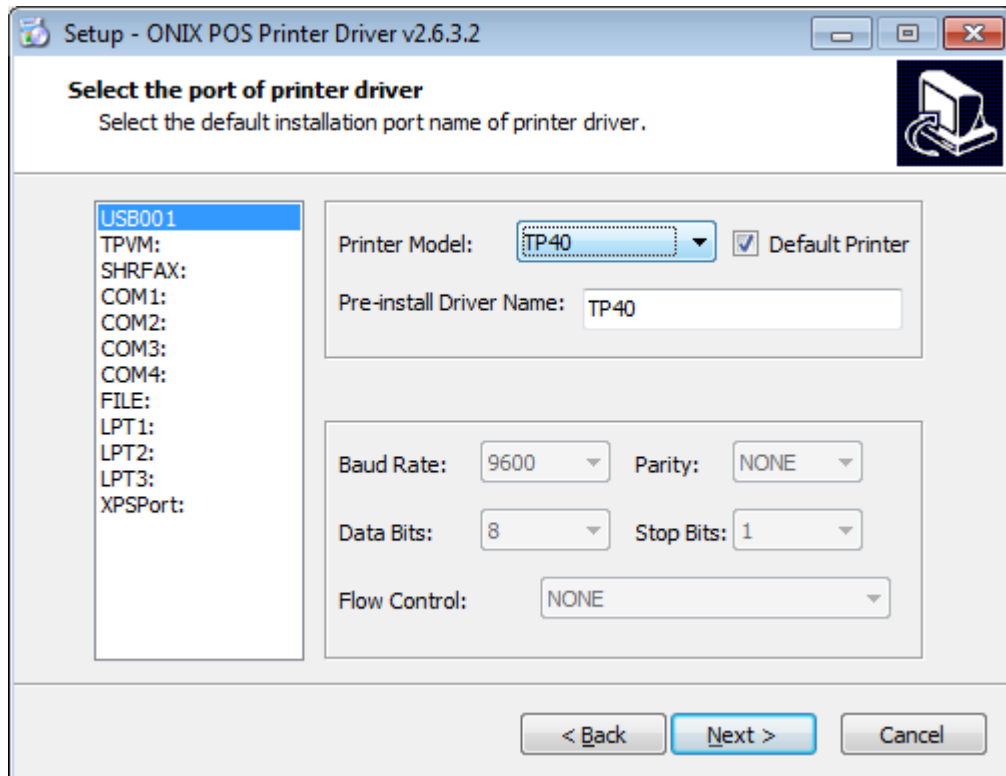
1. Double click Windows Driver.
2. Choose "I accept the agreement" and click
3. "Next".



4. Click "Next"

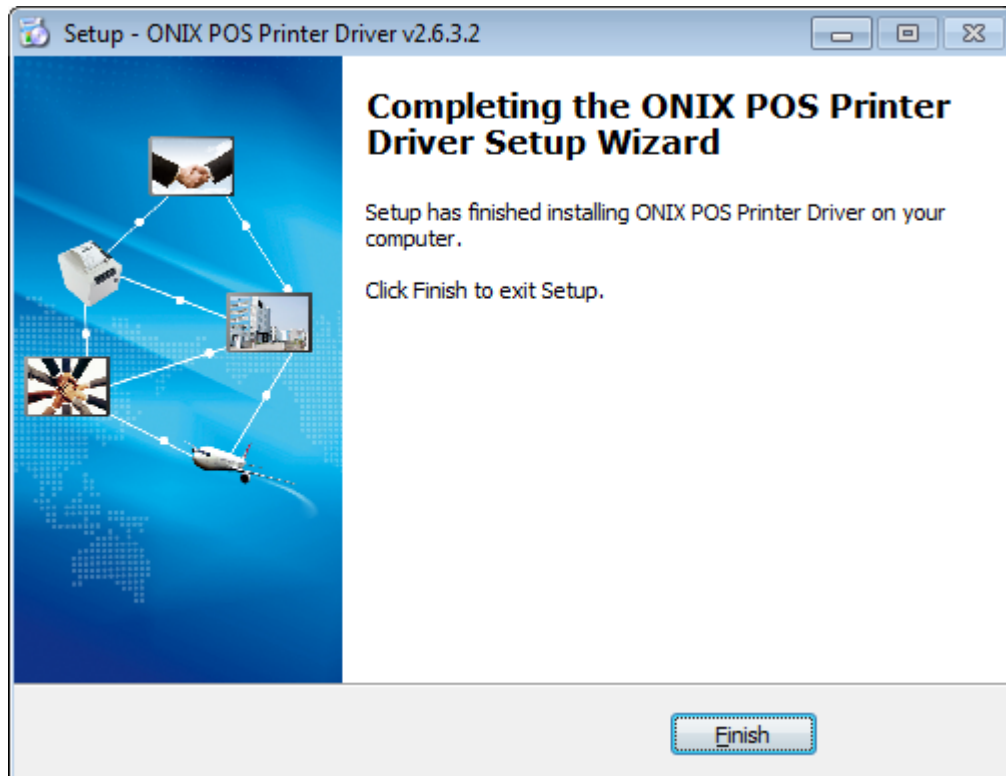


- Choose the matched type and port (USBxxx is for USB port, COMx is for serial port, LPTx is for parallel port). Choose the type and port of driver, such as “USB001” as port. Click “Next”.



NOTE: If printer is already connected with computer by USB port, it only needs to click “Install”, then it will be installed automatically. Otherwise, proceed to the next step.

6. Click "Finish". POS printer driver is installed successfully.



7. After installation, the icon will be found in "Start" → "Devices and Printers".

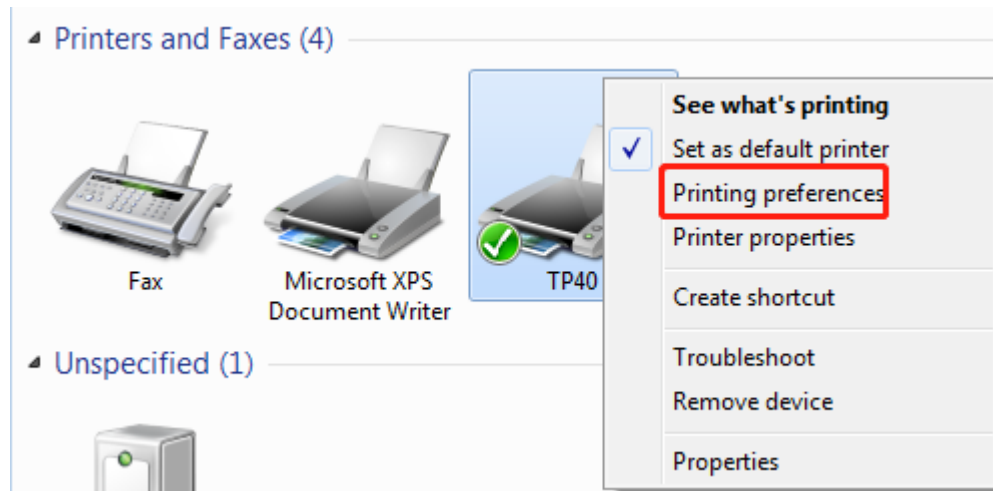


NOTE: If you already installed the driver (No matter what kind of port), when you connect the printer with computer, it will create a USB port automatically.

8.5 Detailed Windows Driver Setting

8.5.1 Printing Preferences

1. Click “Start” → “Devices and Printers”. Right click “TP40” and choose “Printing preferences”.



2. According to the different needs, choose “Paper”\“Offset”\“Rotate”\“Effect”\“Copies” in “Page”.

The 'Page' settings dialog box includes the following sections:

- Paper:** Paper Name: Custom(72.0mm * 297.0mm) [Manager]
- Offset:** Horizontal: 0.0 mm, Vertical: 0.0 mm
- Rotate:** 0° (selected), 90°, 180°, 270°
- Effect:** Mirror, Inverse, Scale: 100 %
- Copies:** Copies: 1, Reverse Print Order

1) Paper

Paper Name: Custom(72.0mm * 297.0mm)

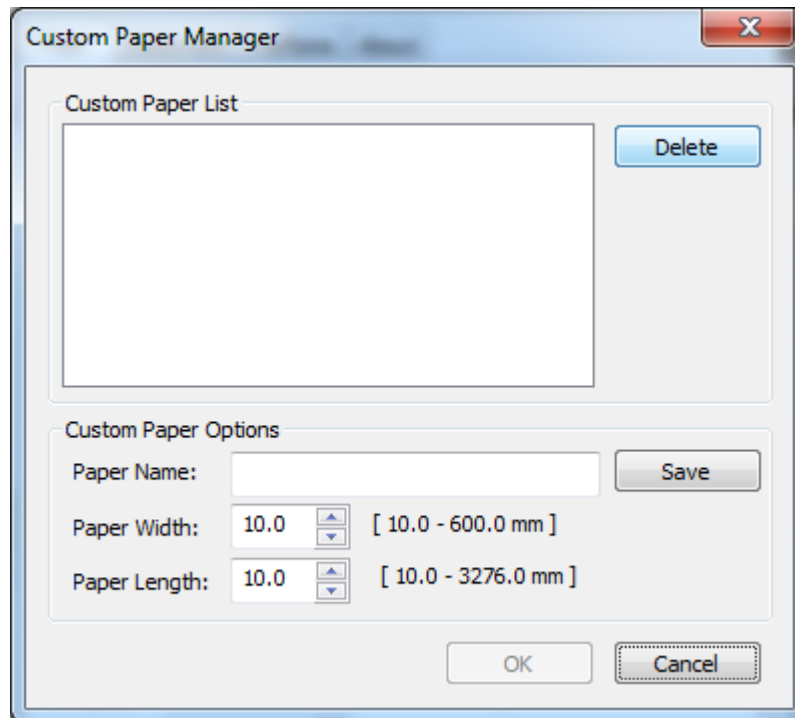
- Custom(72.0mm * 297.0mm)
- 72mm * 297mm
- 72mm * 420mm
- 72mm * 3276mm
- 48mm * 297mm
- 48mm * 420mm
- 48mm * 3276mm

2) Offset

Offset

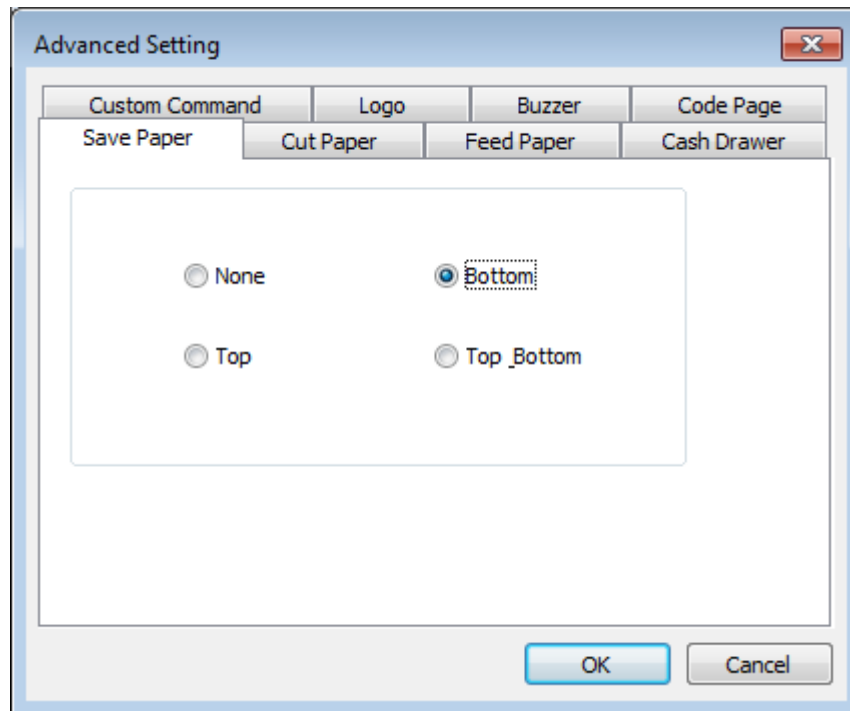
Horizontal: 0.0 mm, Vertical: 0.0 mm

- Click “Manager”, add or delete paper.

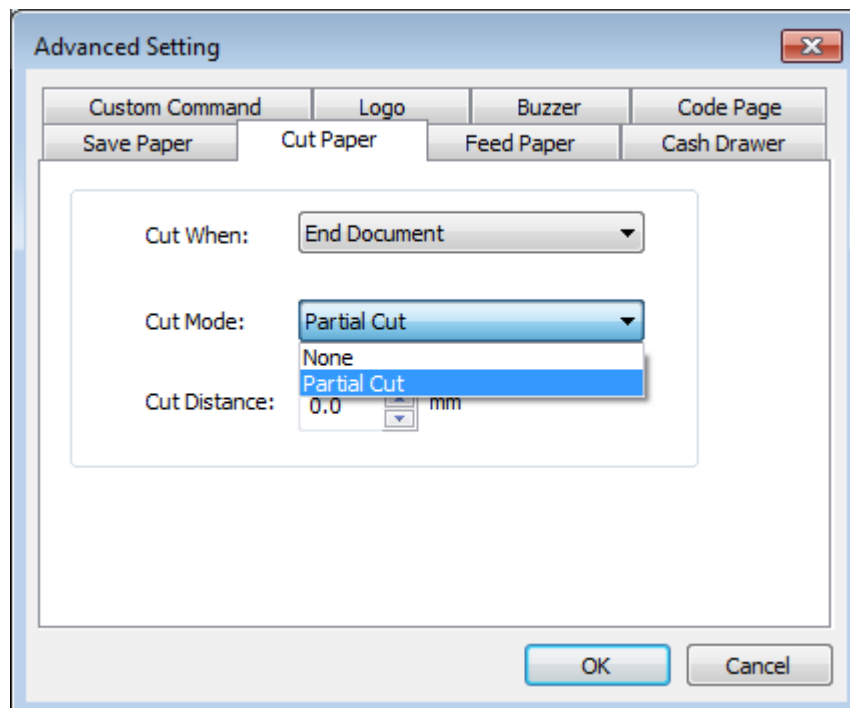
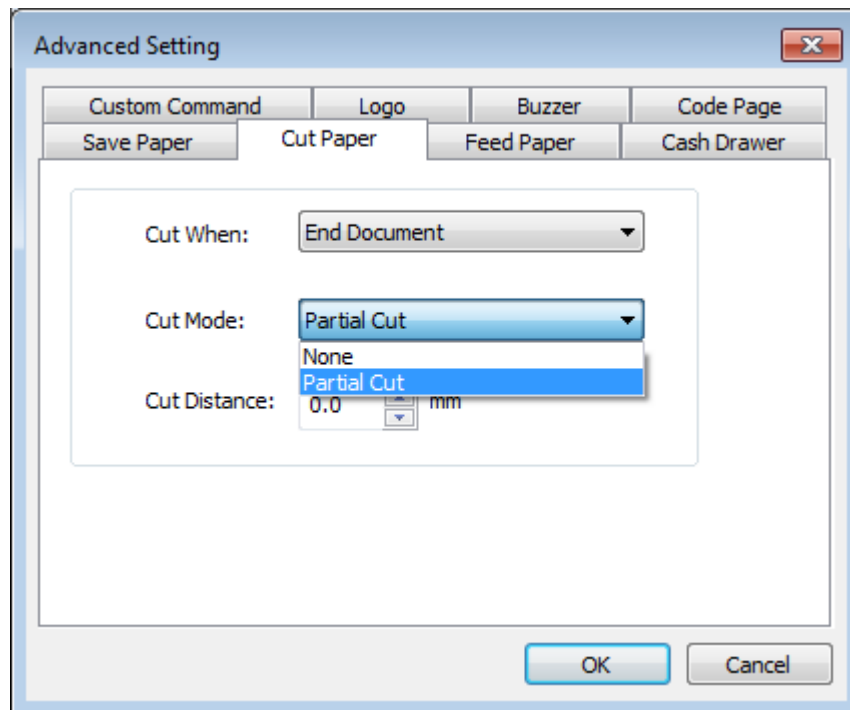


- Click “Advanced” to set “Save Paper”, “Cut Paper”, “Feed Paper”, “Cash Drawer”, “Custom Command”, “Logo”, “Buzzer”, “Code Page”.

1) Save Paper

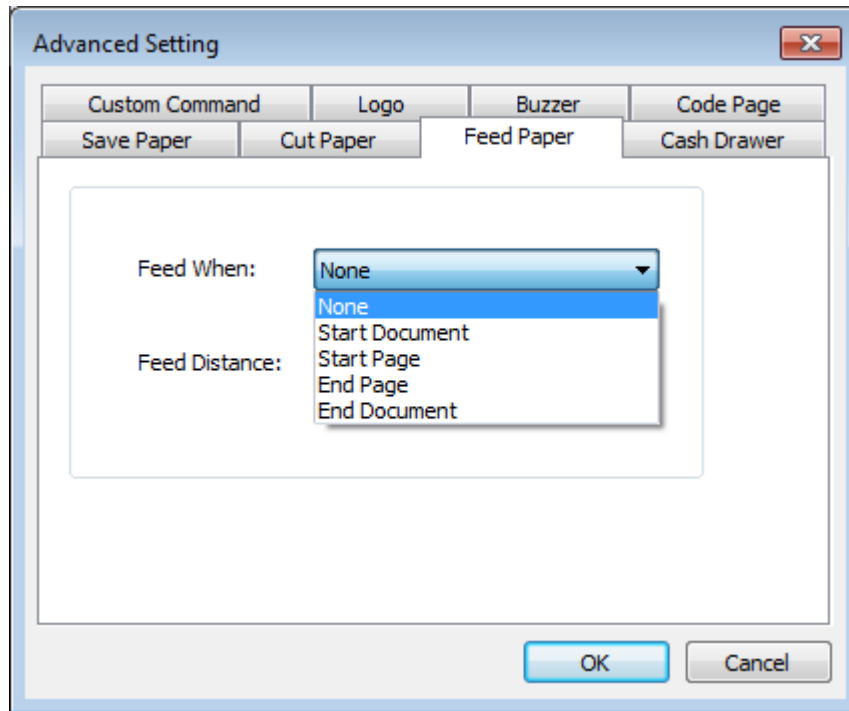


- Cut Paper



Cut Distance: 0/5/10/15/20mm (End Document)

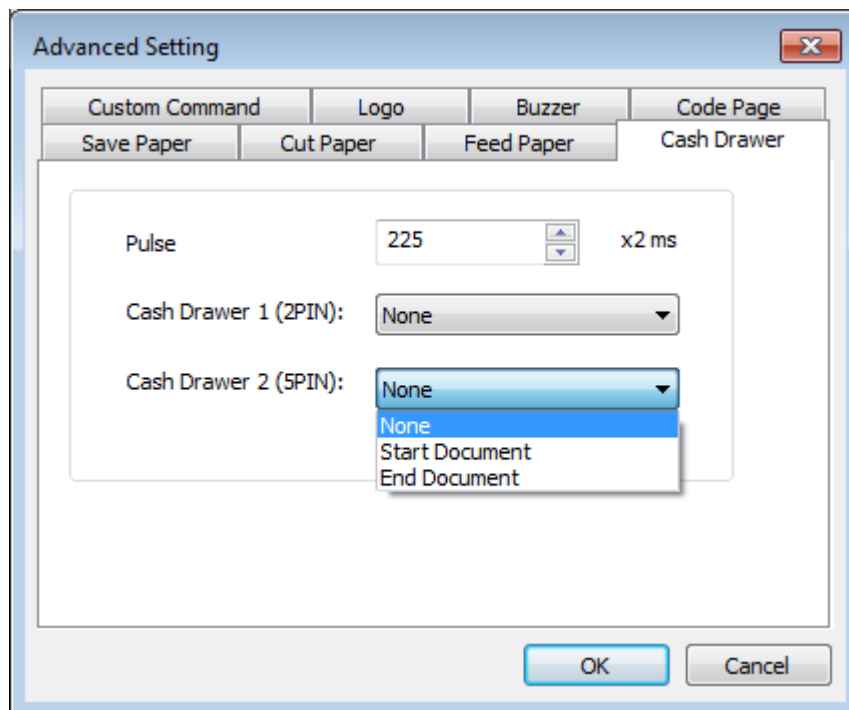
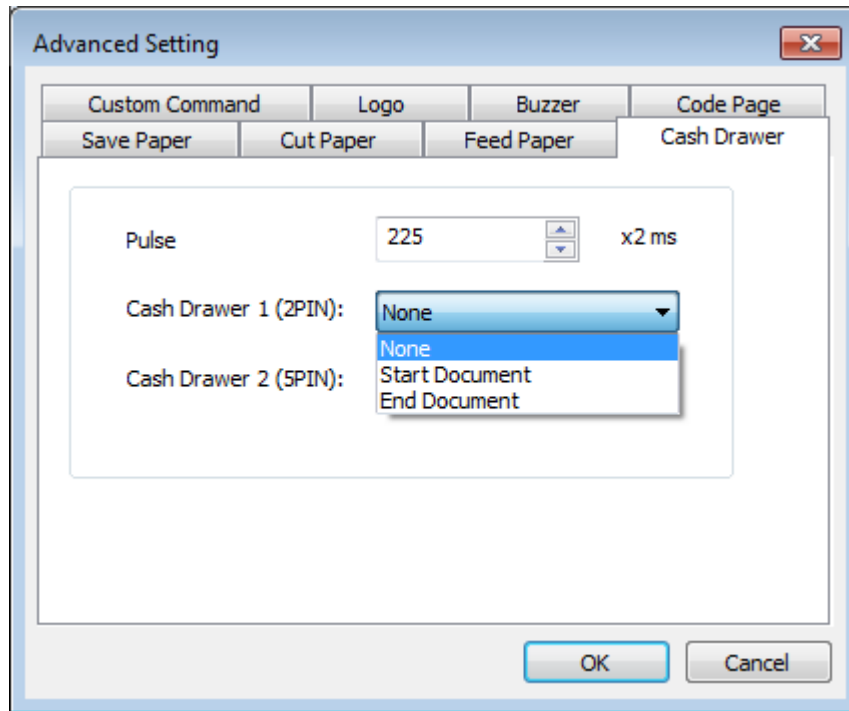
- Feed Paper



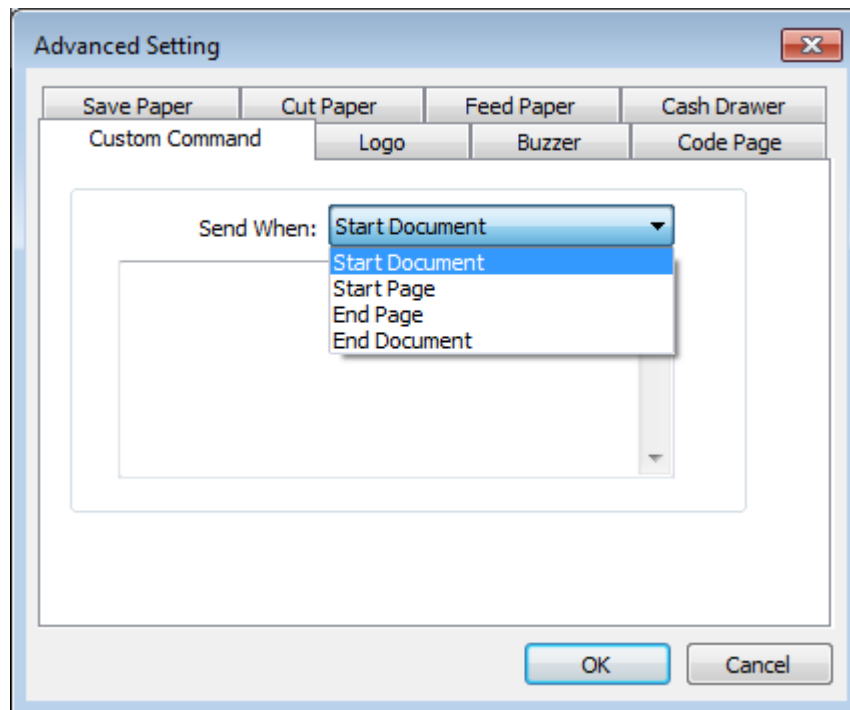
Feed Mode: Feed Automatically/Cut Automatically/Cut Automatically Per Page/None

Feed Distance: 0/5/10/15/20mm (End Document)

- Cash Drawer

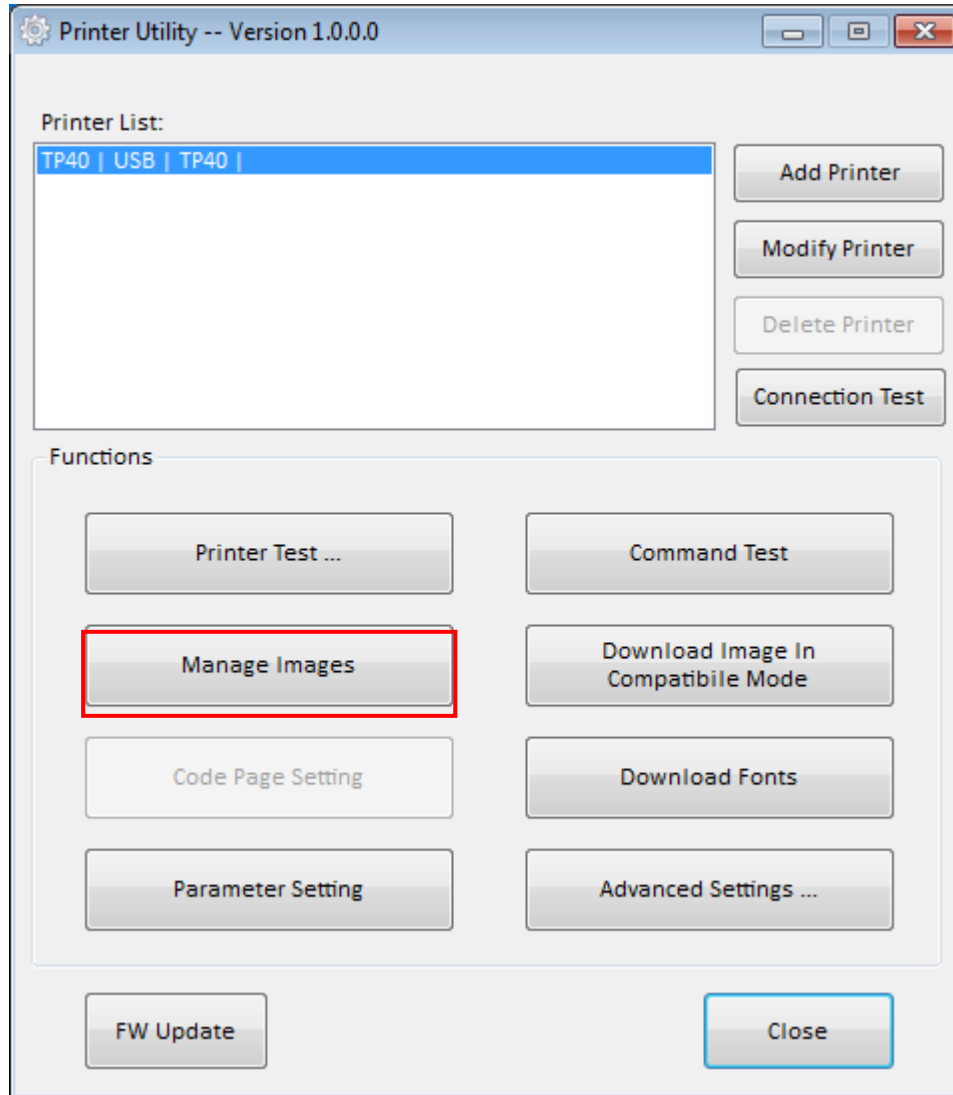


- Logo

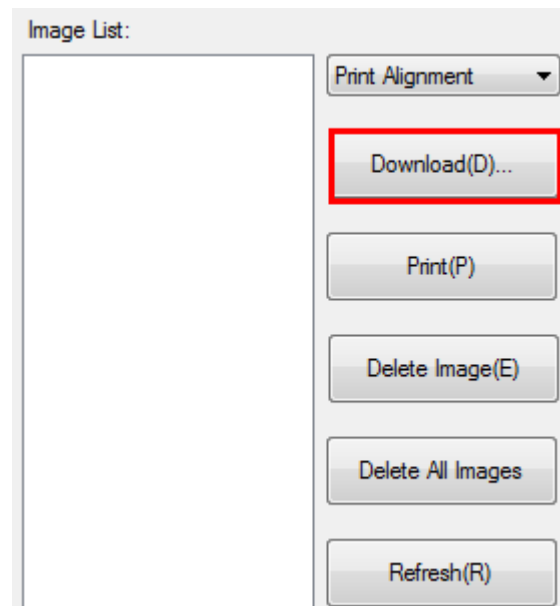


Note: this setting need to be set in utility, here are the steps.

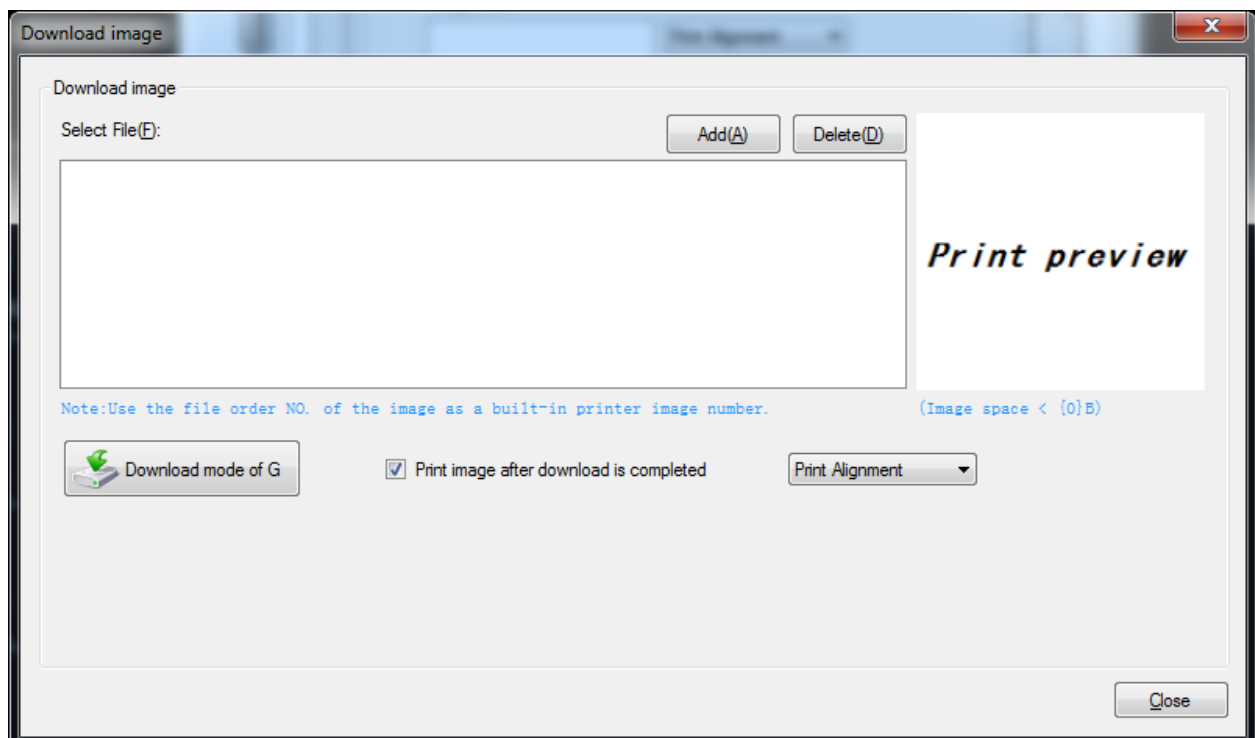
- 1) Open the utility and click "Manage Images".

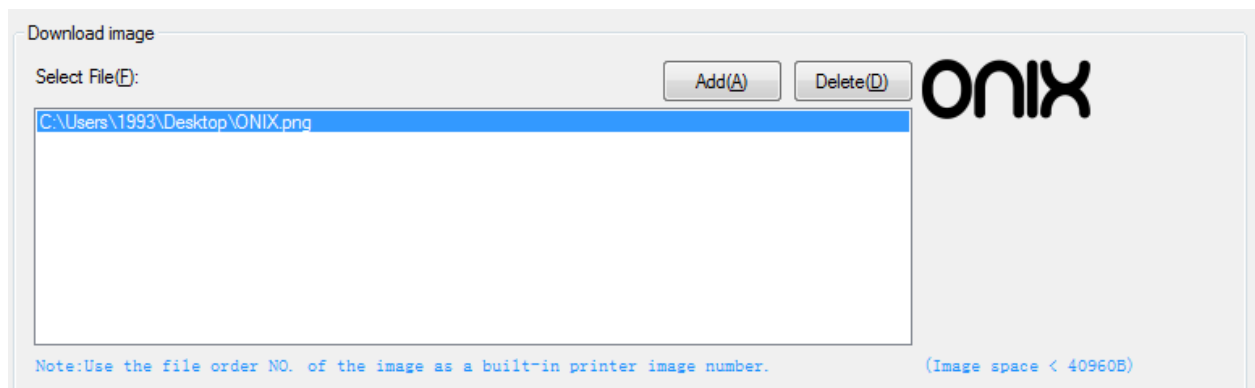


2) Click "Download".

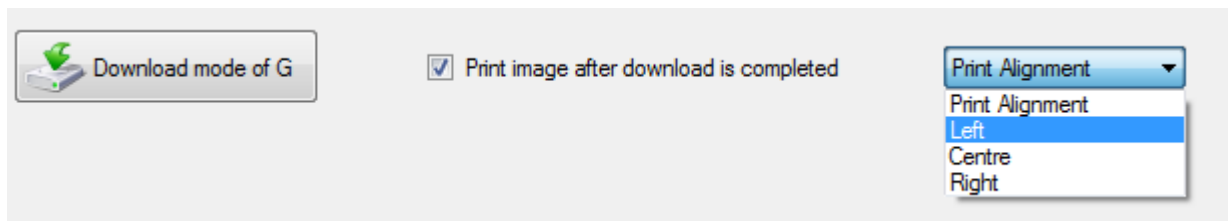


3) Click "Add" to add a logo. (BMP format is recommended)



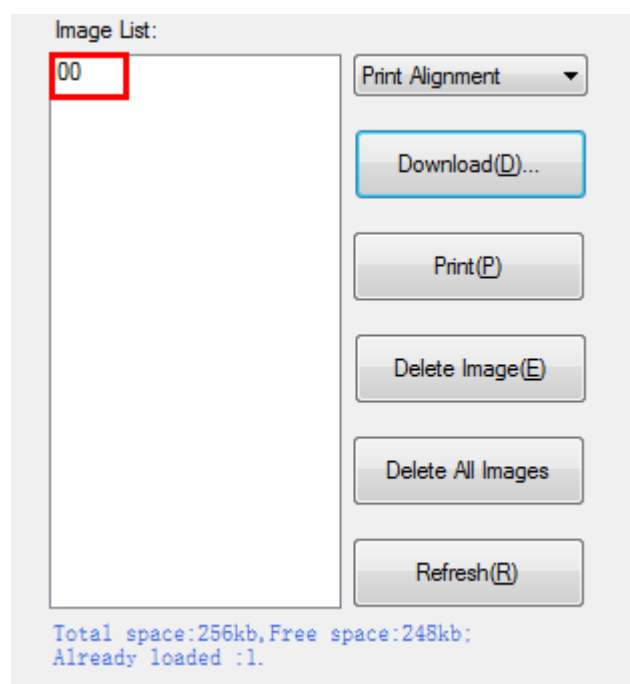


- 4) Select the print location, and then click "Download mode of G". (Such as: left print)

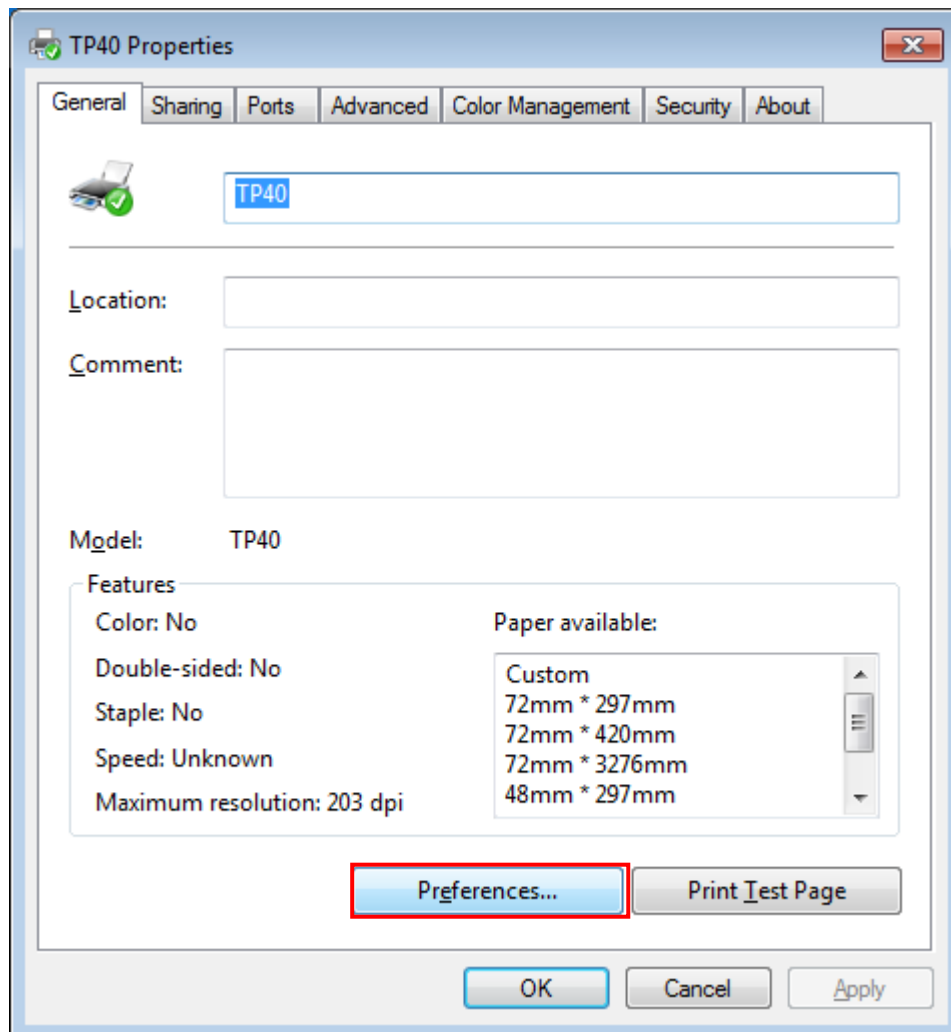
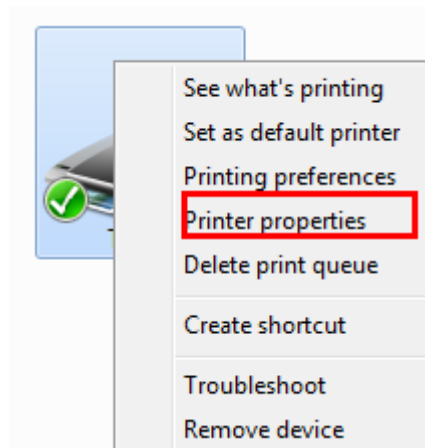


- 5) Return to image list to view the image number.

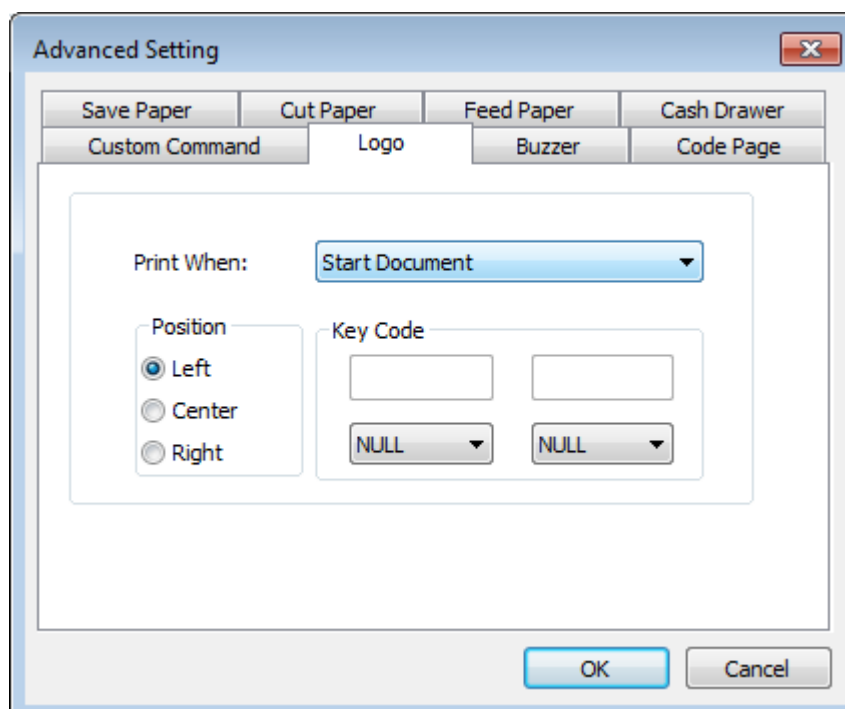
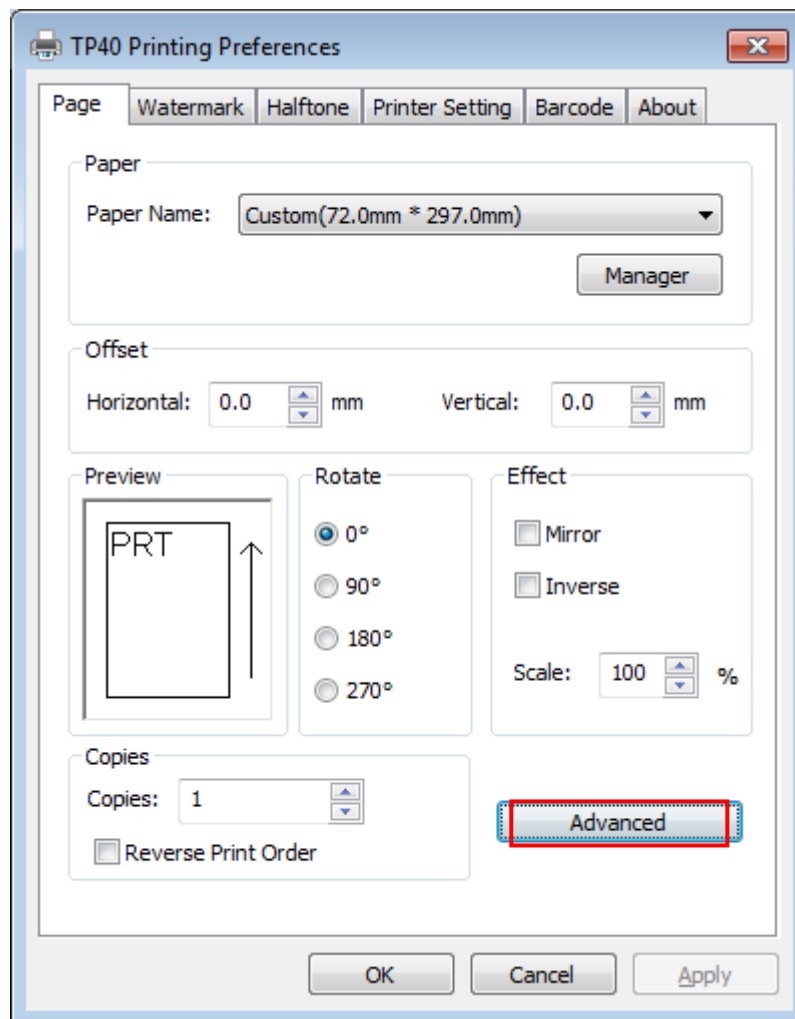
Note: each time click "Download mode of G", an image list number will be generated.



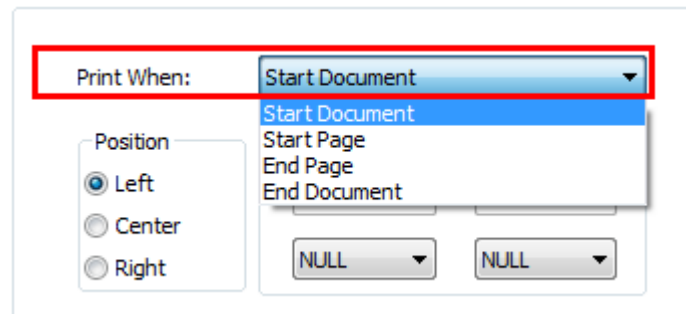
6) Select Printer properties in Devices and Printers, then click “Preference”.



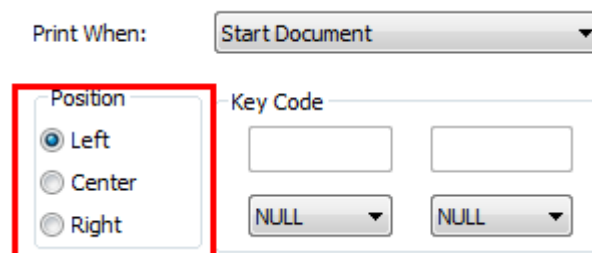
7) Click the “Advanced”, then click “Logo”.



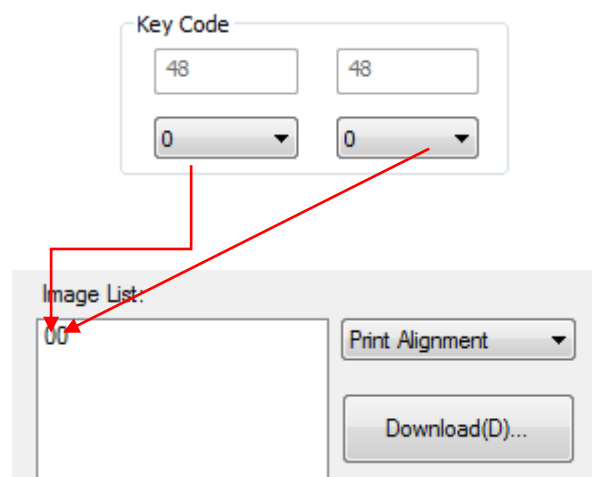
8) Set the printing time to print and click "OK". (Such as: Start Document)



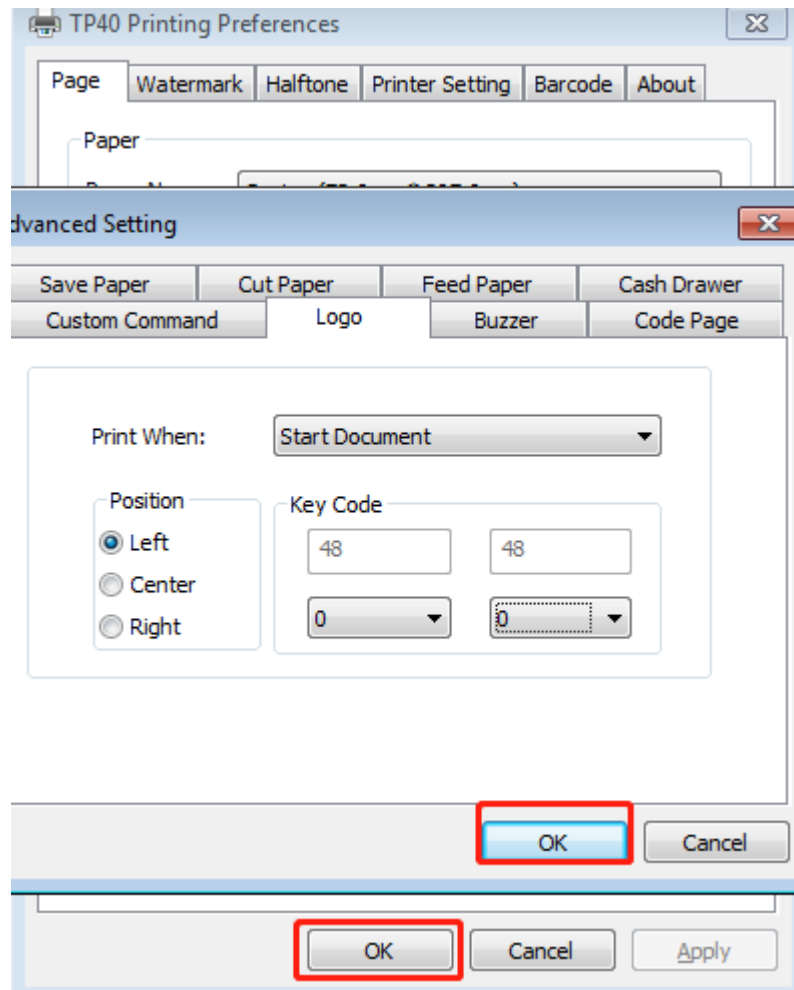
9) Return to the logo setting in driver, also select "Print left".



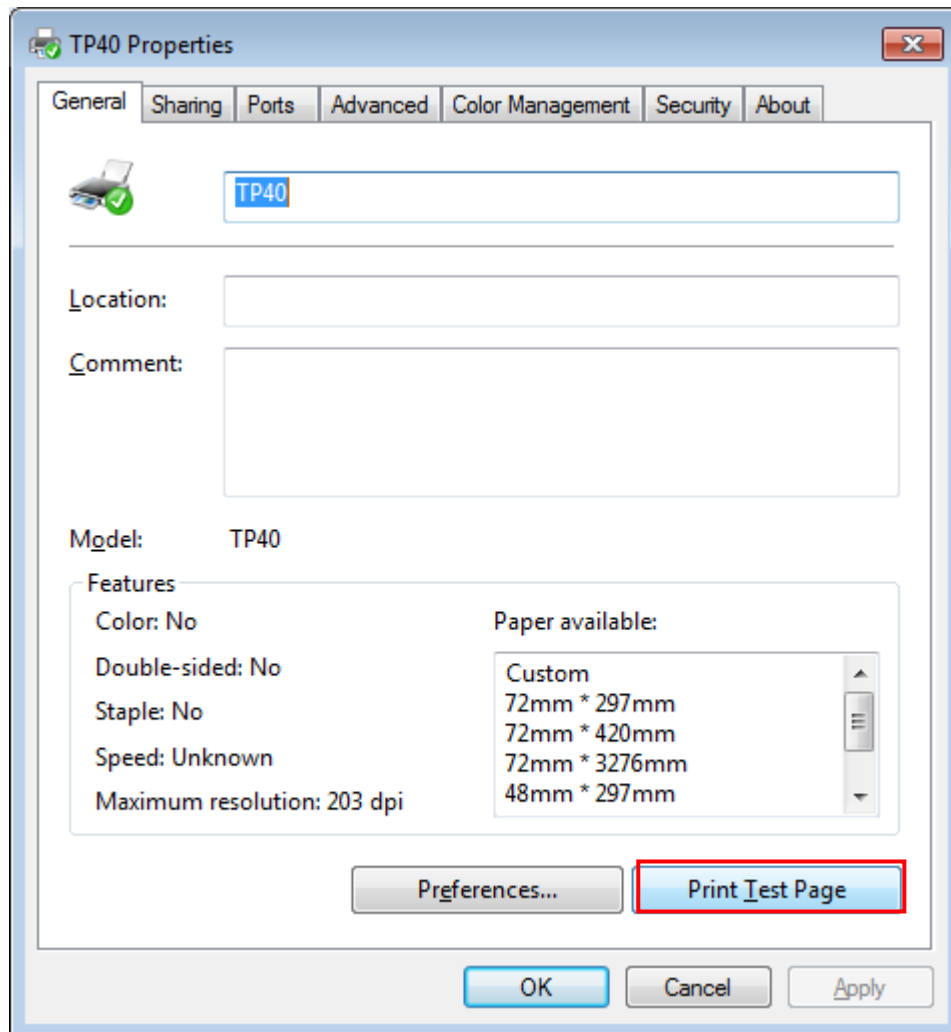
10) Set the key Code according to the image number. (Such as: 0 0)



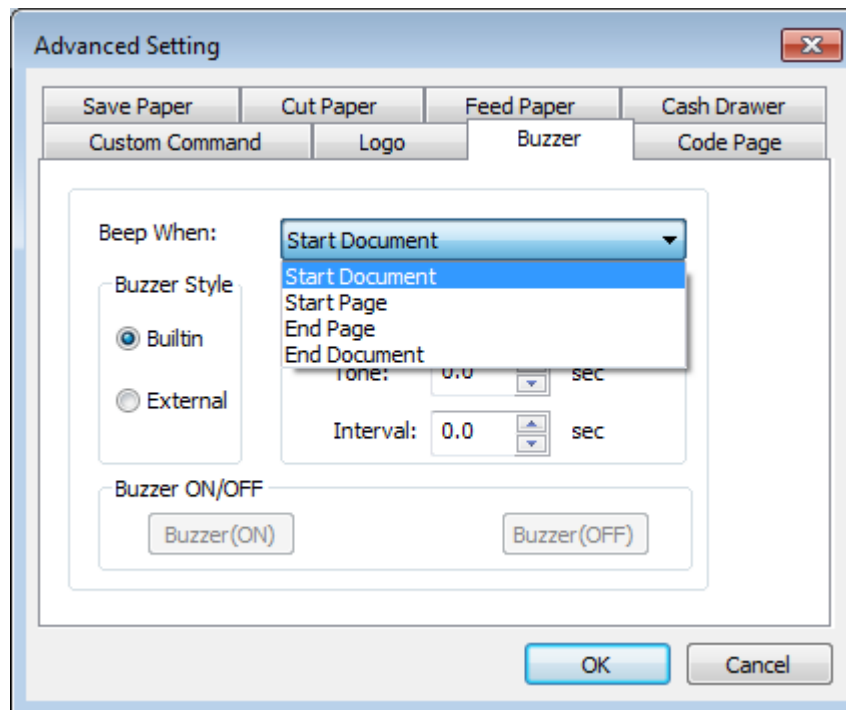
11) Then click “OK”.



12) Click “Print Test Page” to view the printing effect.



- Buzzer



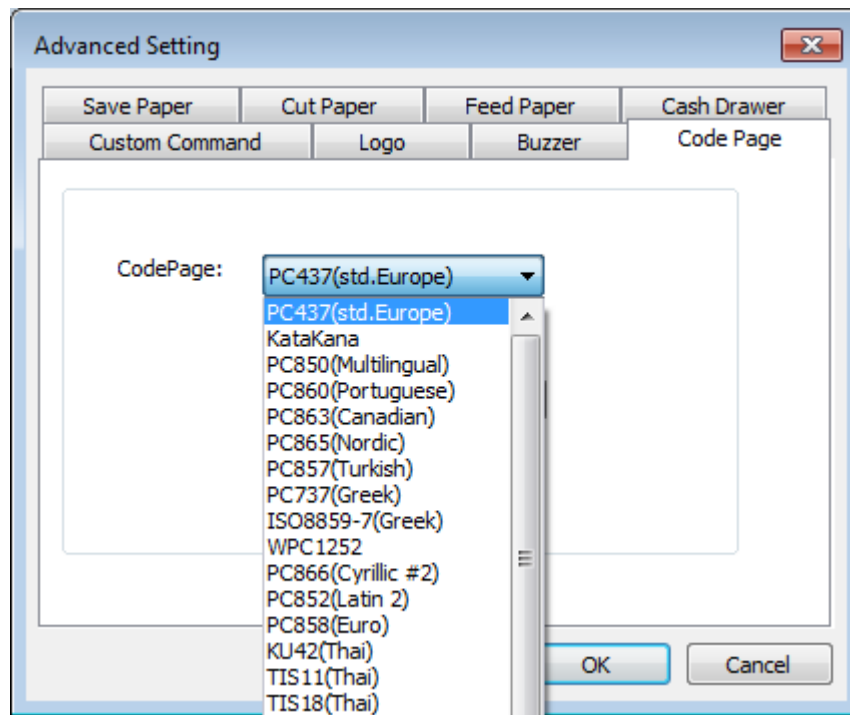
Buzzer times: 0/1/2/3/4/5

Buzzer Duration: 0.0/0.5/1/1.5/2/2.5/3.0 Sec

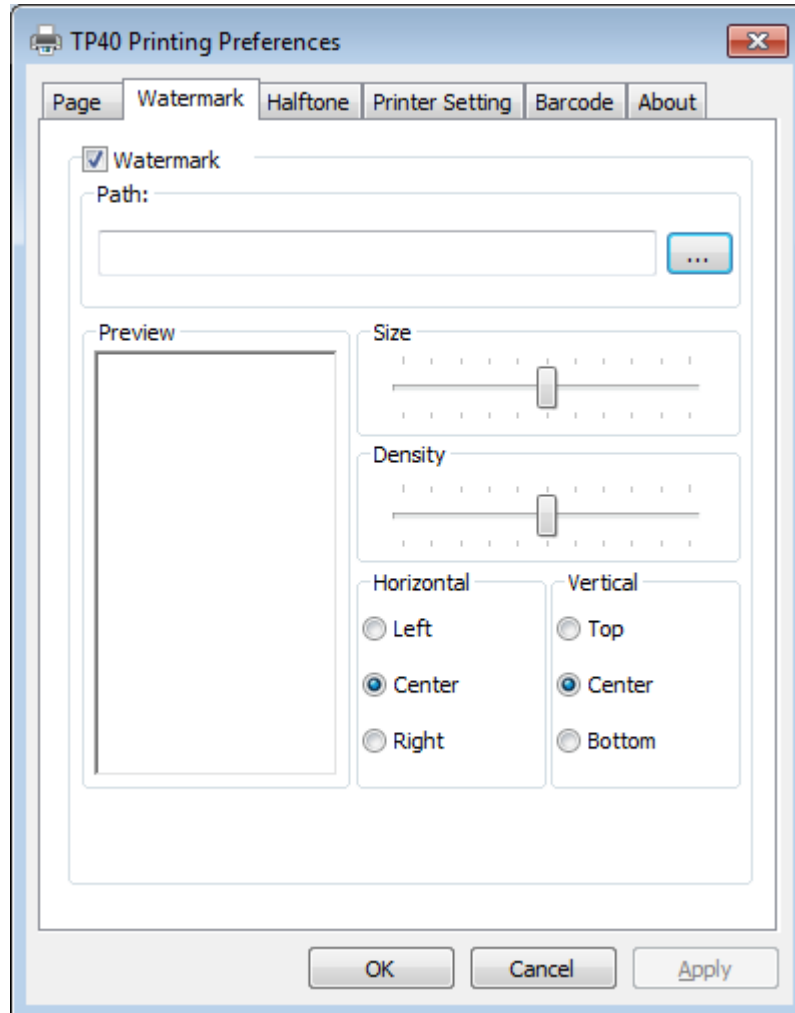
Buzzer Interval: 0.0/0.5/1/1.5/2/2.5/3.0 Sec

Note: this setting must be operated in Utility.

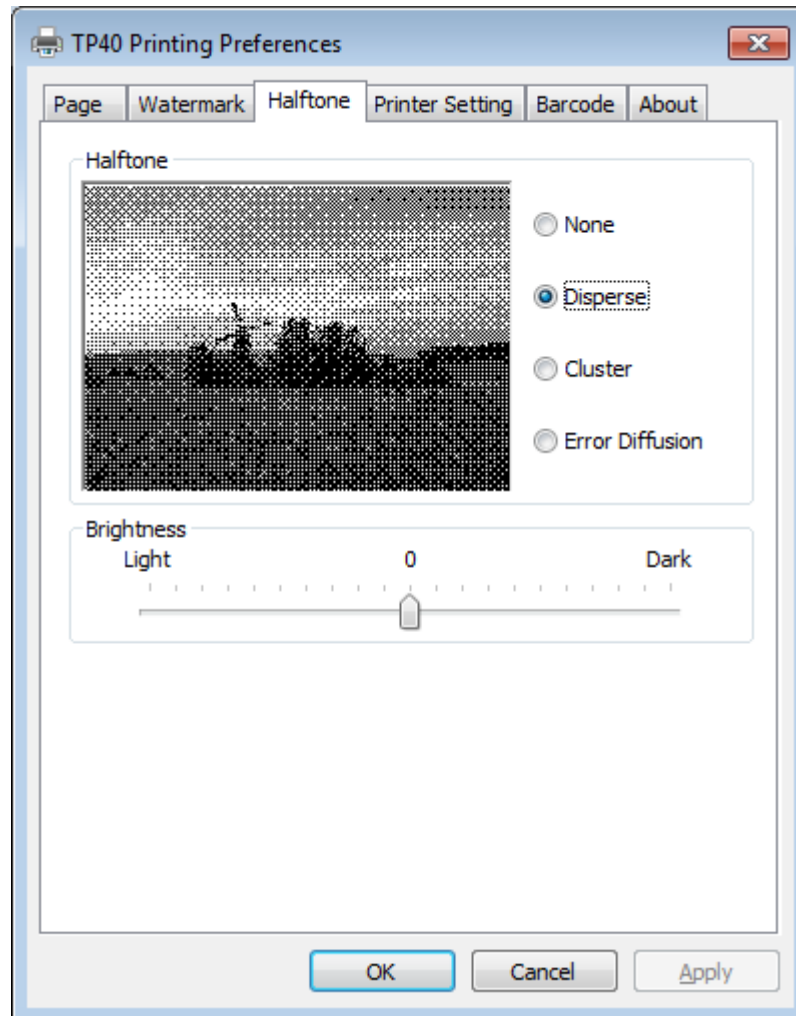
- Code Page

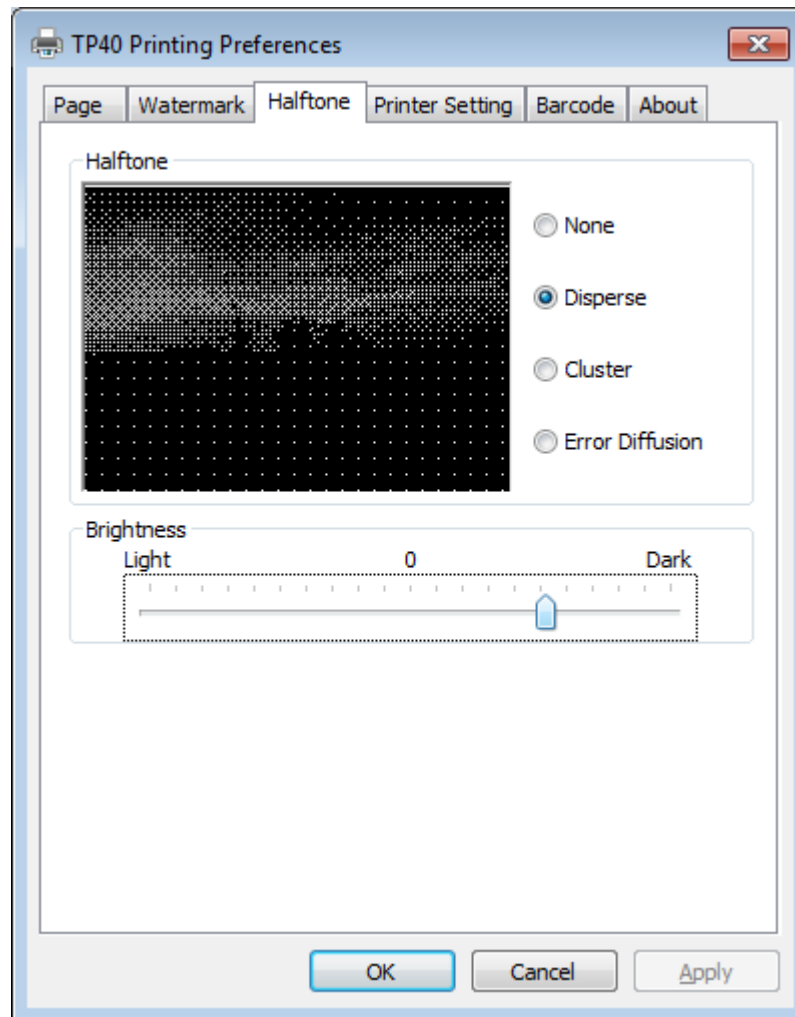


3. Click “Watermark”. Set watermark to print (BMP format is recommended) and click OK to save it.



4. Click “Halftone” to set the halftone.

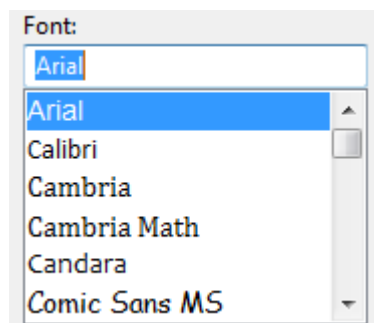
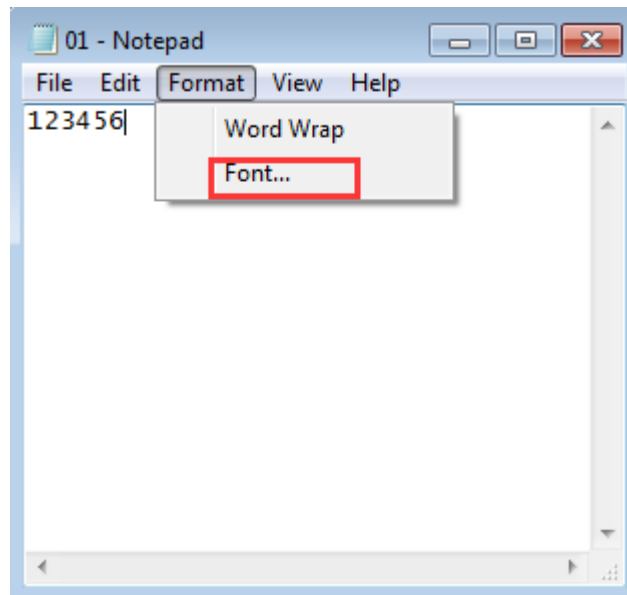




5. Set up the "Barcode"

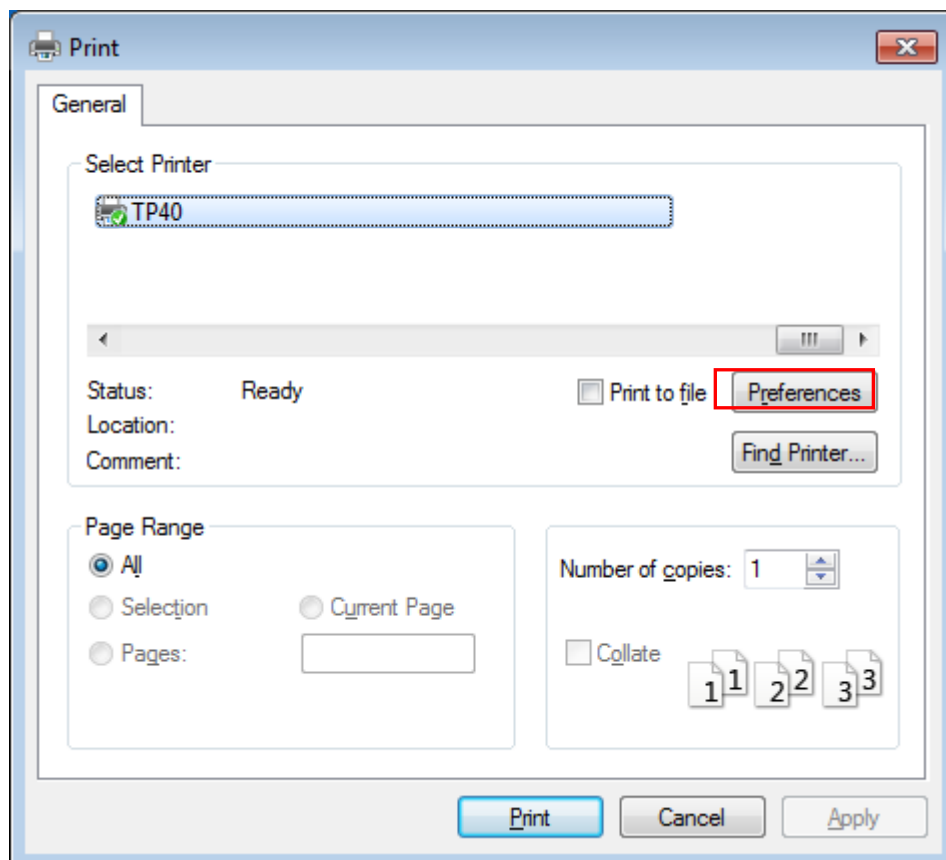
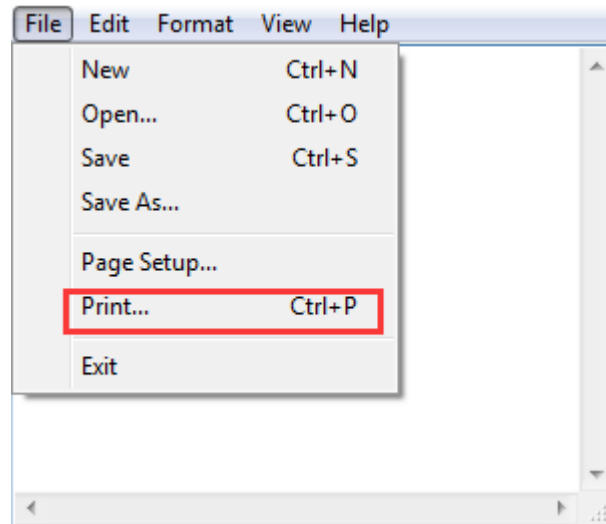
Assuming the font type of the main document is "Italics", if you want to convert the data "123456" to the barcode printing, the steps are as follows:

- Sets the data "123456" font type to a different font from the main document. Such as: Arial.

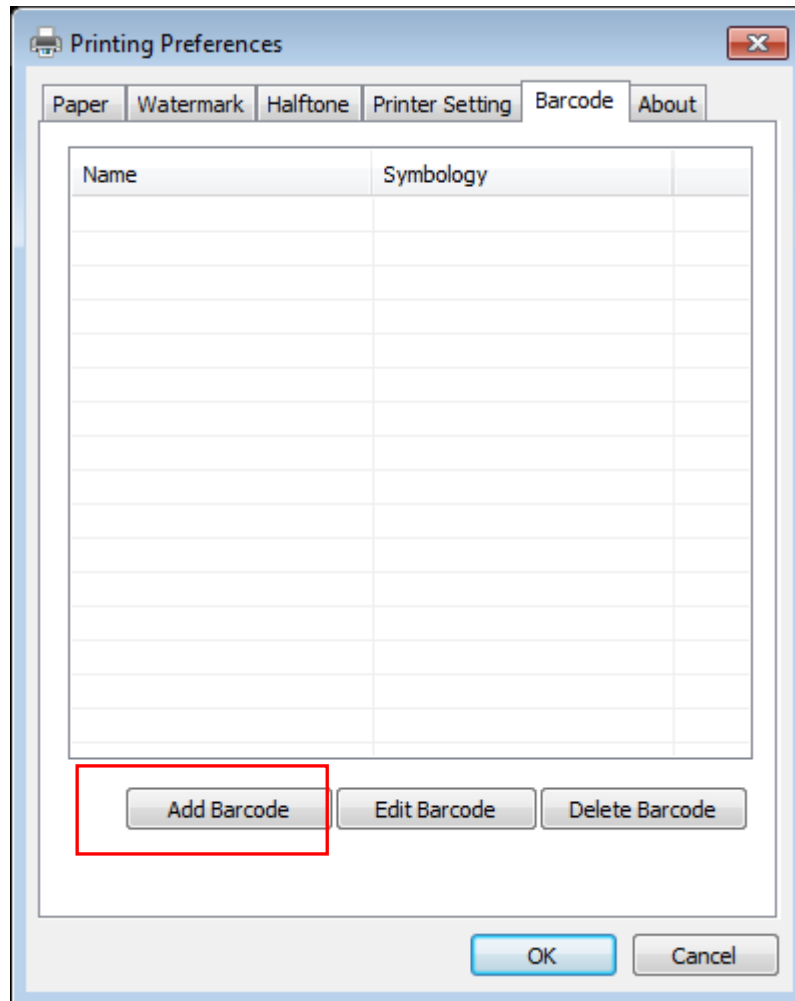


- Open the Preference.

If the document is open, you can set it in the document: file-print-preferences.



1) Add Barcode firstly.



2) Set the “Font Name” and the “Barcode Option”.

Barcode Setting

Font

1、
Font Name: 01

Barcode Options

2、
Symbology: Code39

3、
Width: Auto(3) HRI Position: Below Bars
Height: Auto(162) HRI Font: Auto

Orentation: 0

Symbology Options

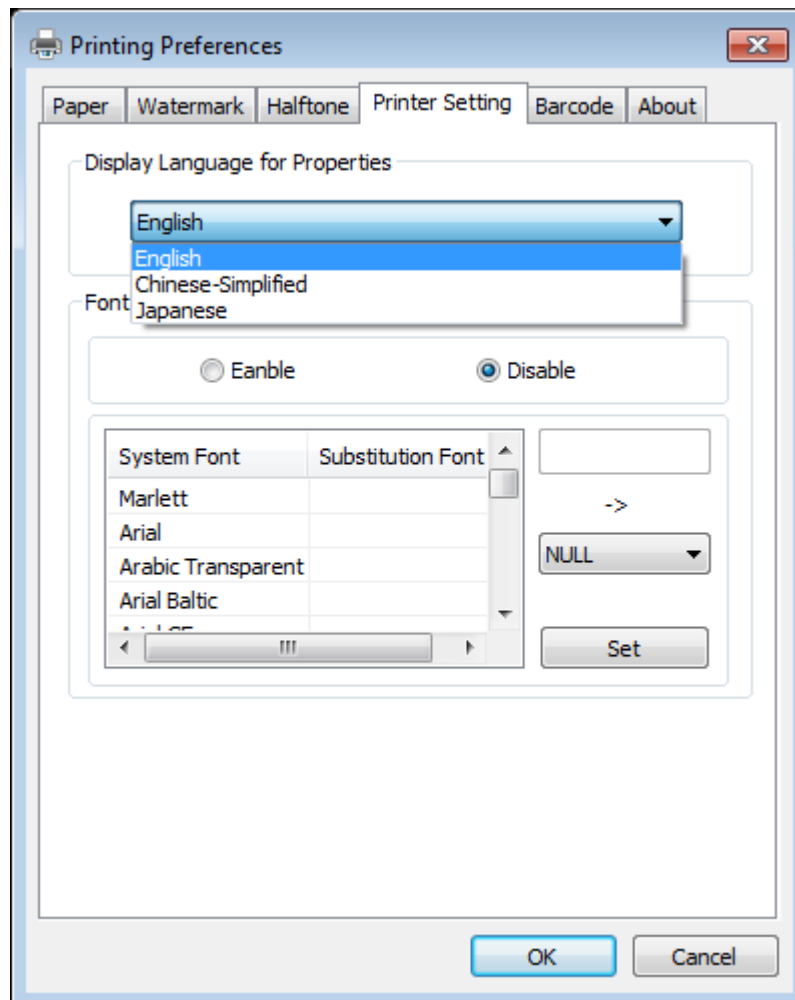
Model: Auto Cols: Auto(0)
Error Correction: Auto Rows: Auto(0)

OK Cancel

[illegible]

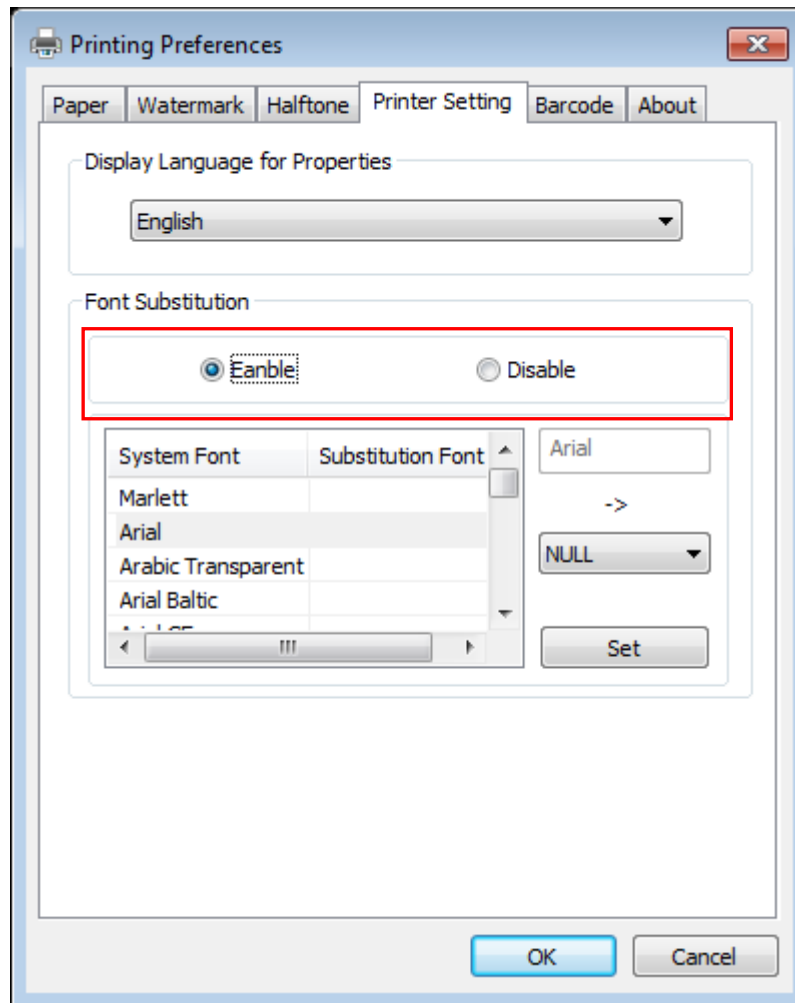
3) Click the “Printer Setting”.

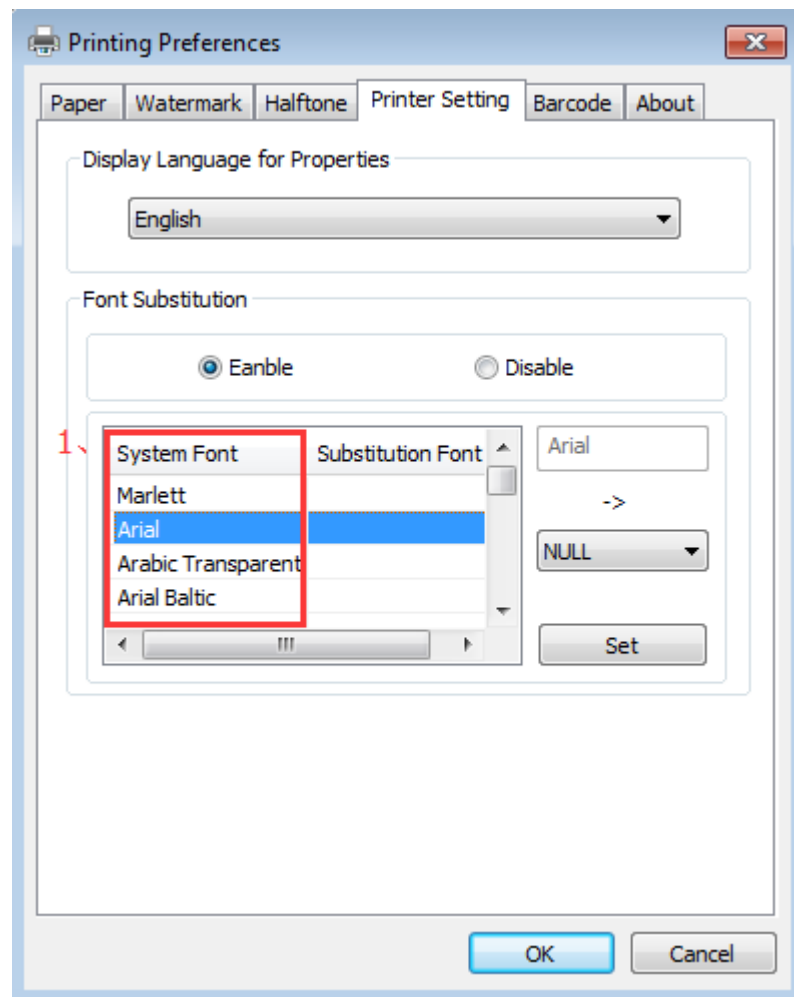
- Choose the “Display Language for Properties”

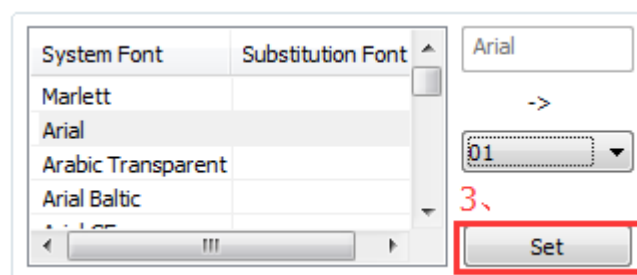
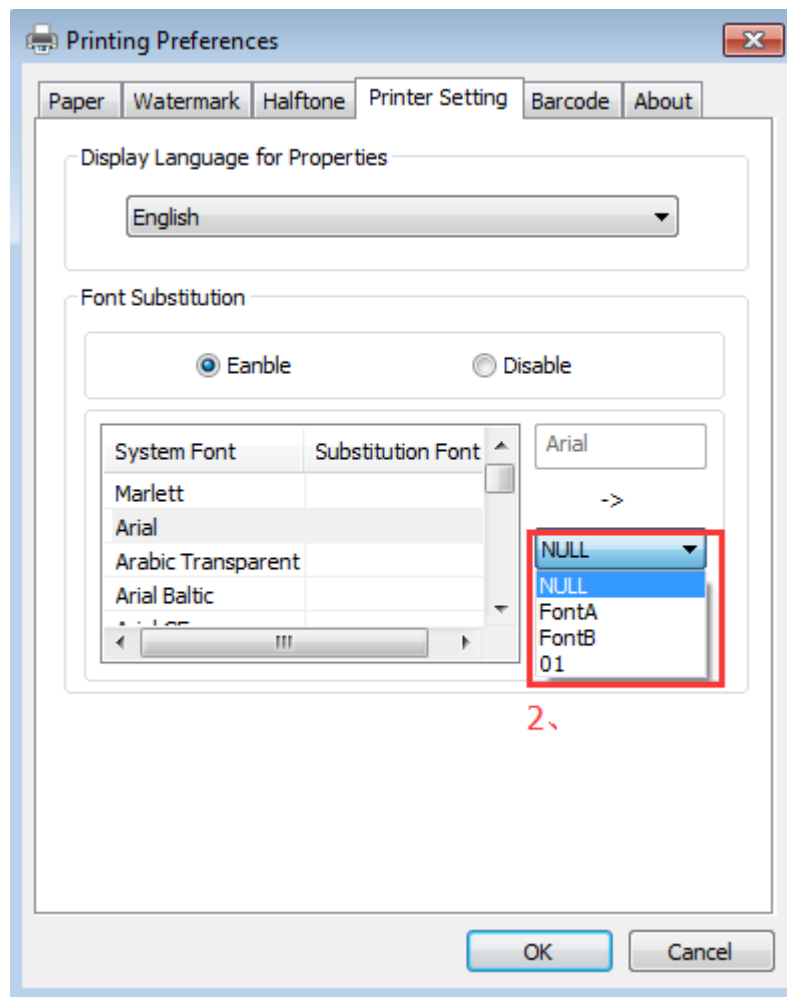


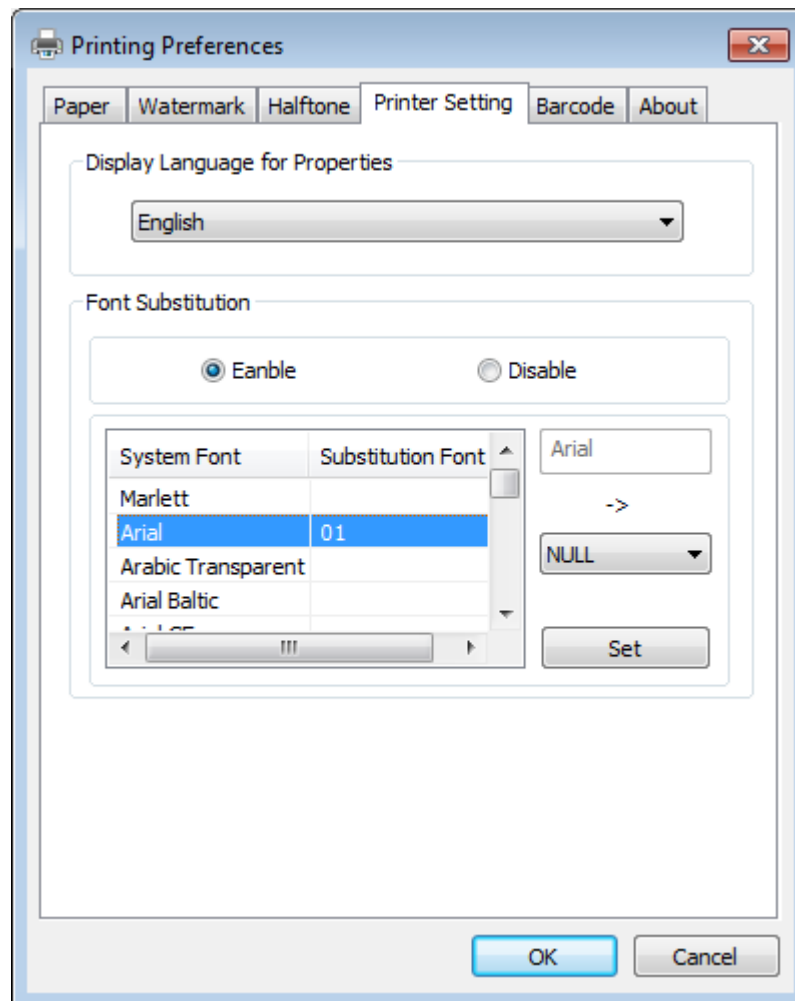
- Turn on the “Font Substitution”, select the system text need to be replaced (for example, Arial), and then select the font you want to replace (for example, 01) and click Settings, and the replacement font will display "01".

the steps are as follows:



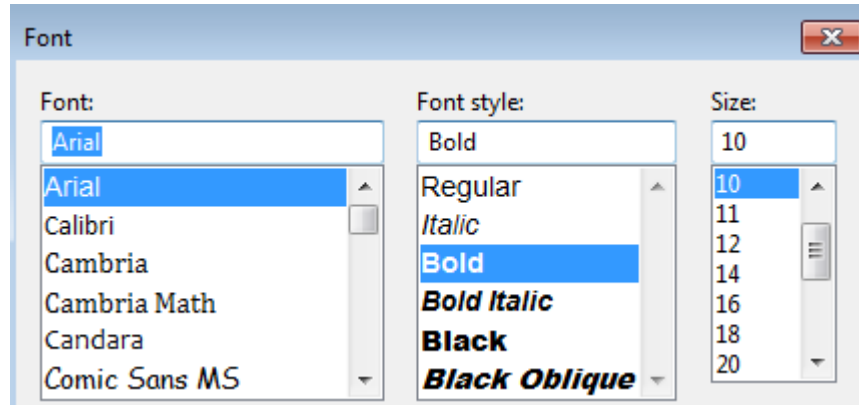




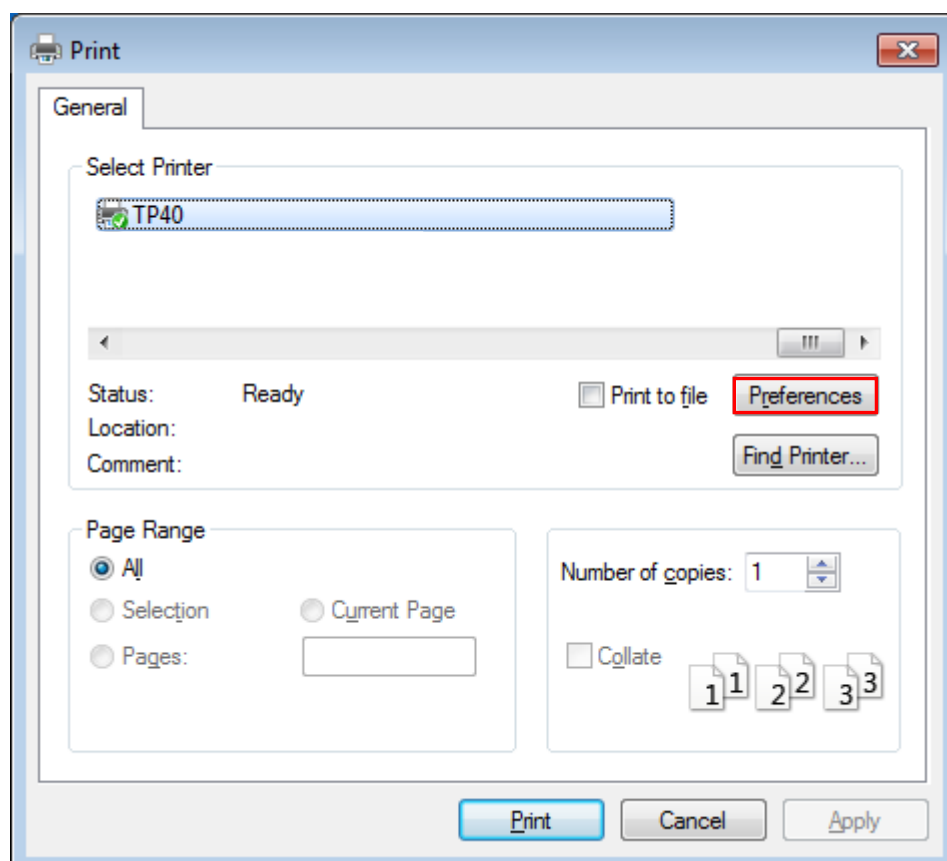


- If you do not have a barcode set, the action is as follows:

1) Suppose you change the size of the data "123456", for example:

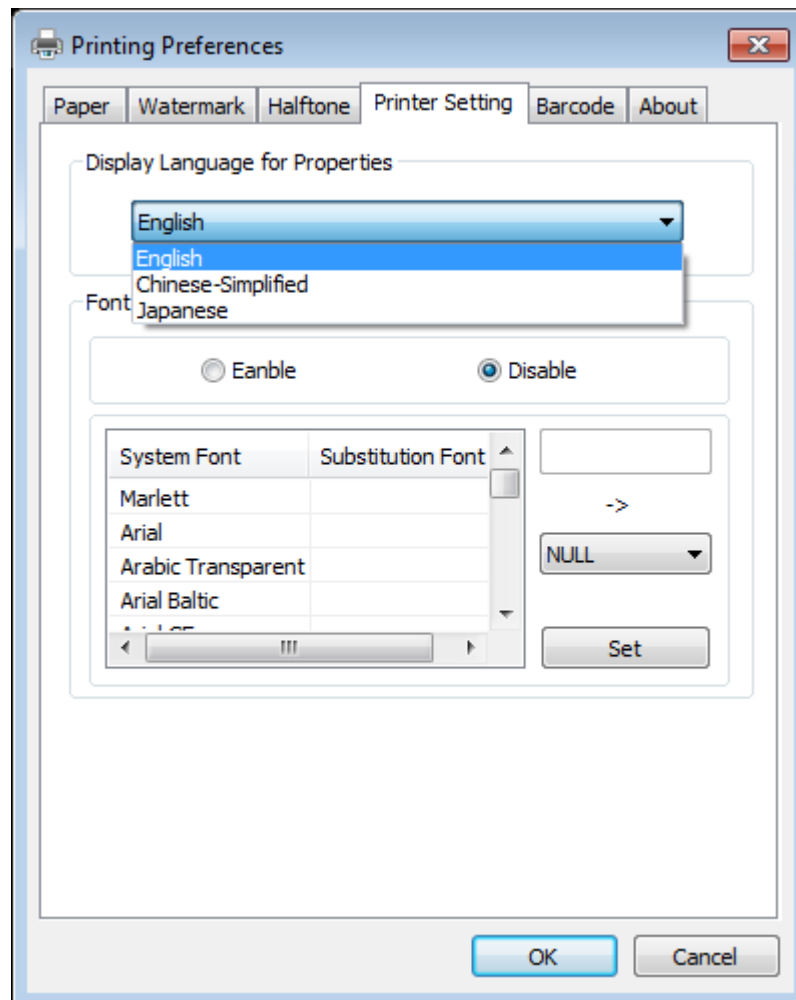


2) Set the Printing preferences.

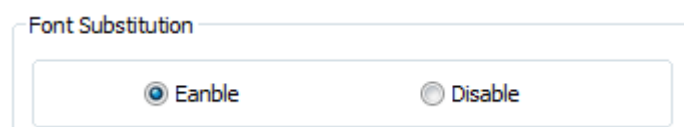


3) Click the “Printer Setting”.

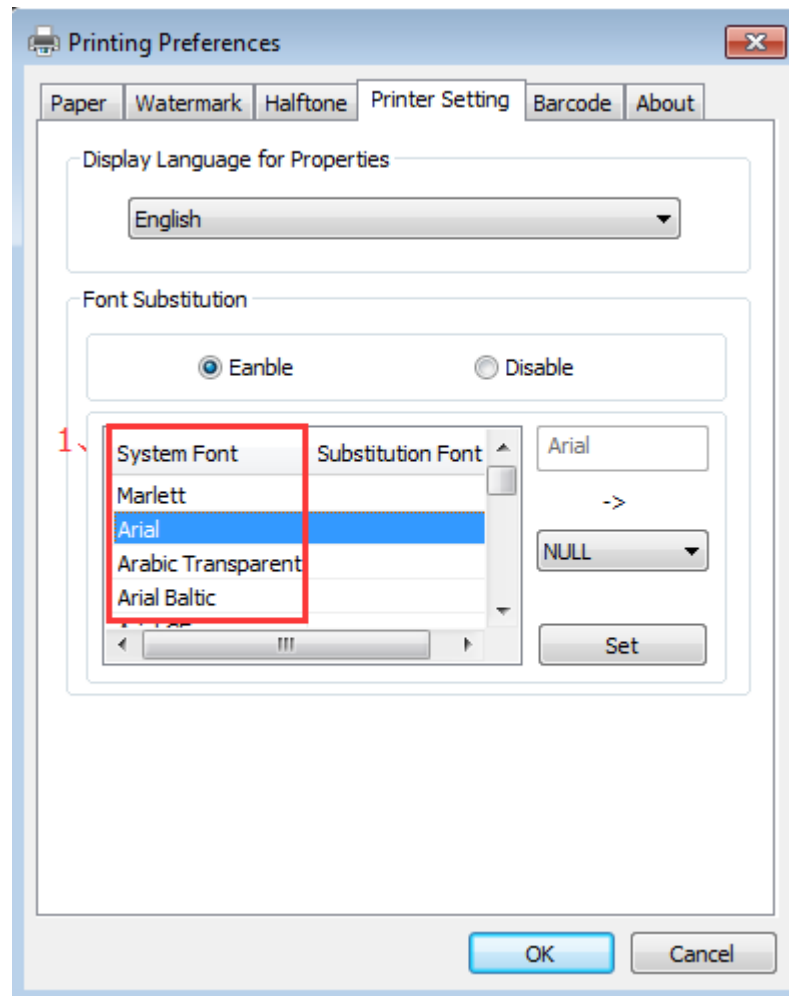
- Choose the “Display Language for Properties”.



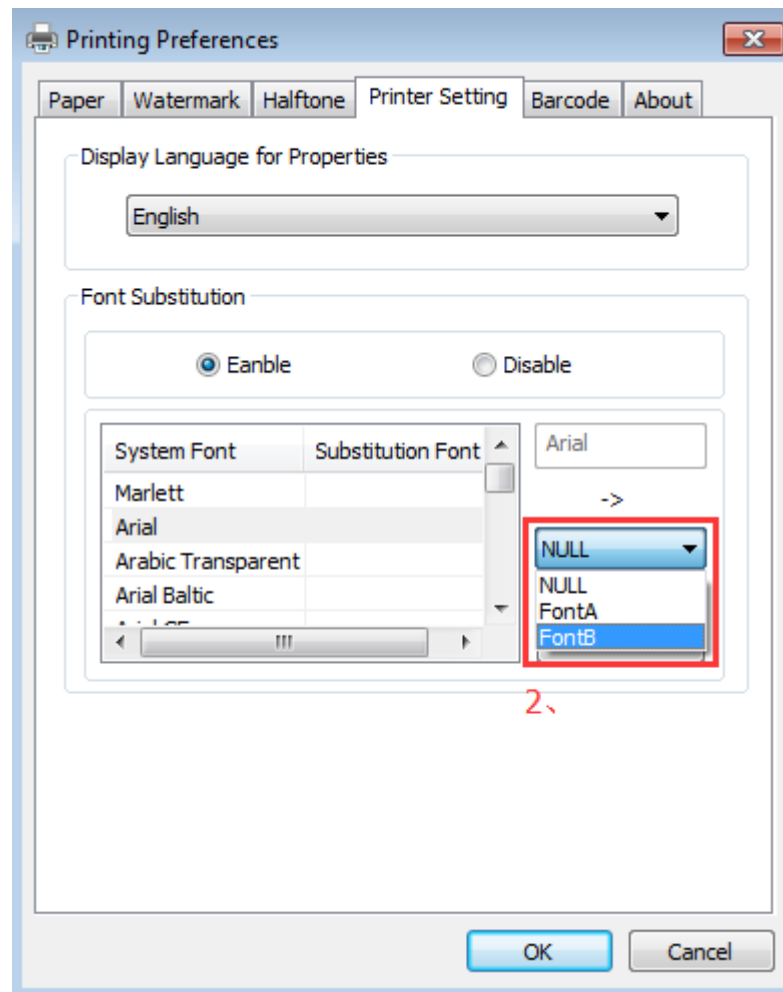
4) Turn on the “Font Substitution”.



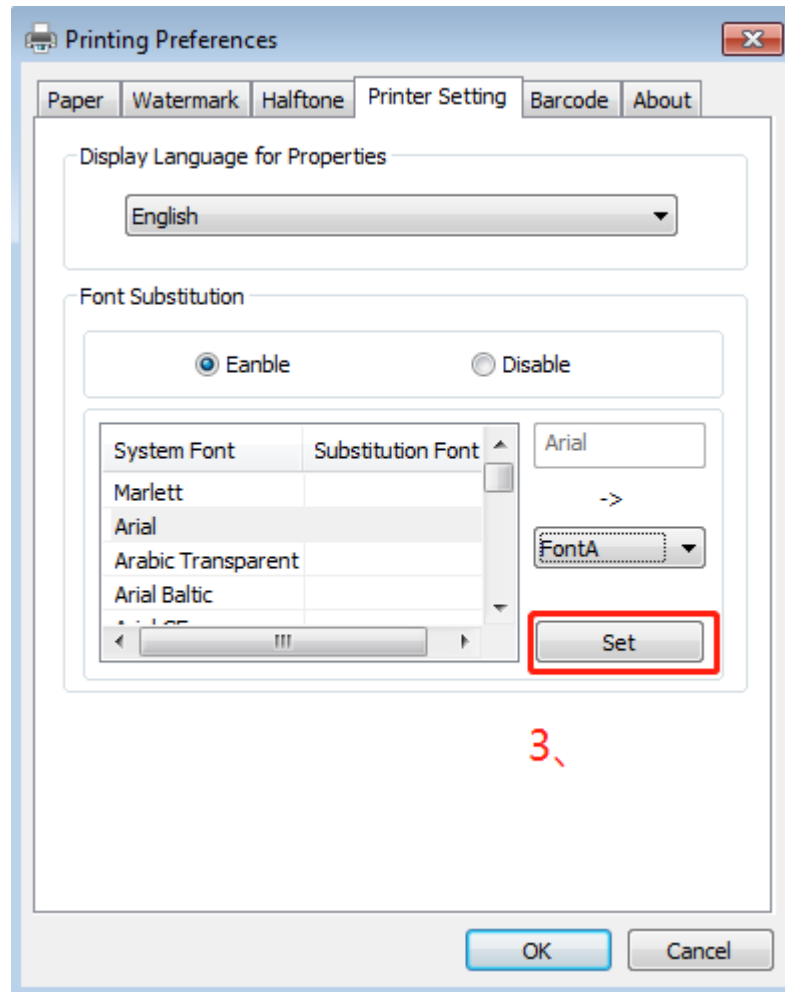
5) Select the “System Font”, for example: Arial.

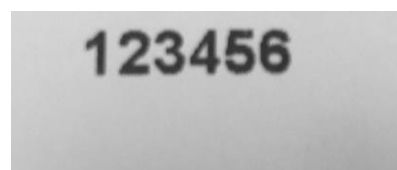
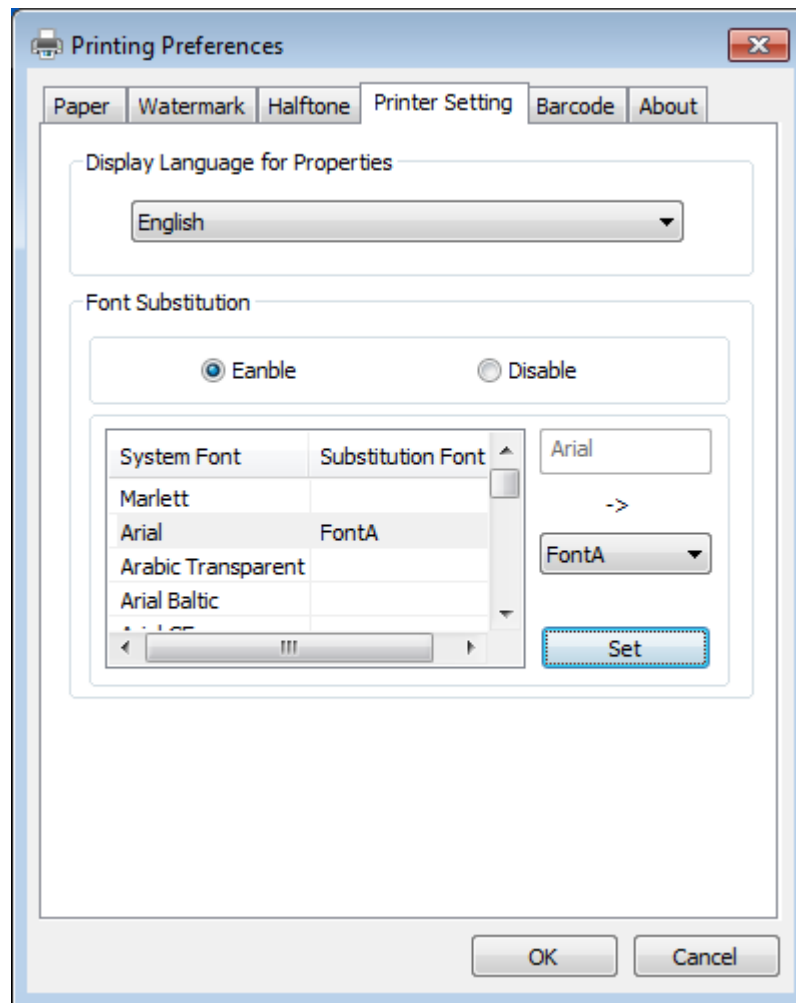


6) Select the font to that you went to replace.



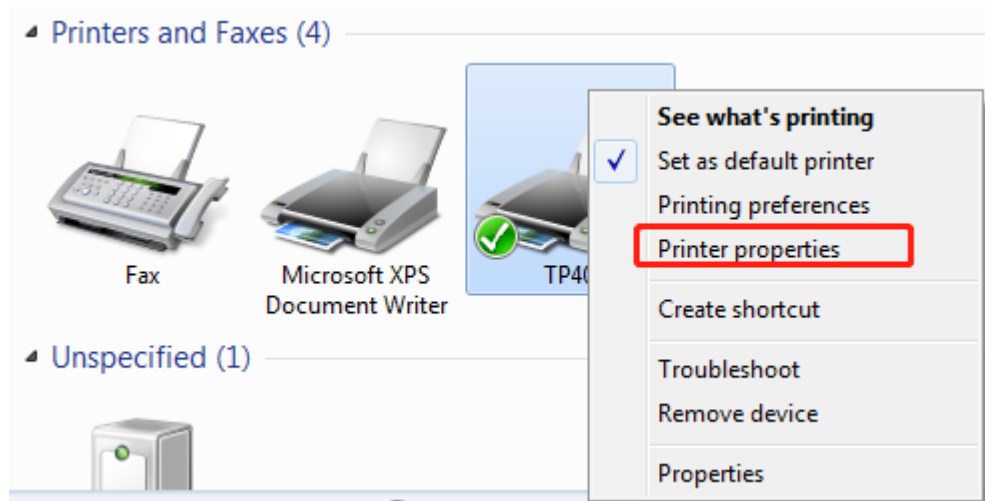
7) Click “Setting”.



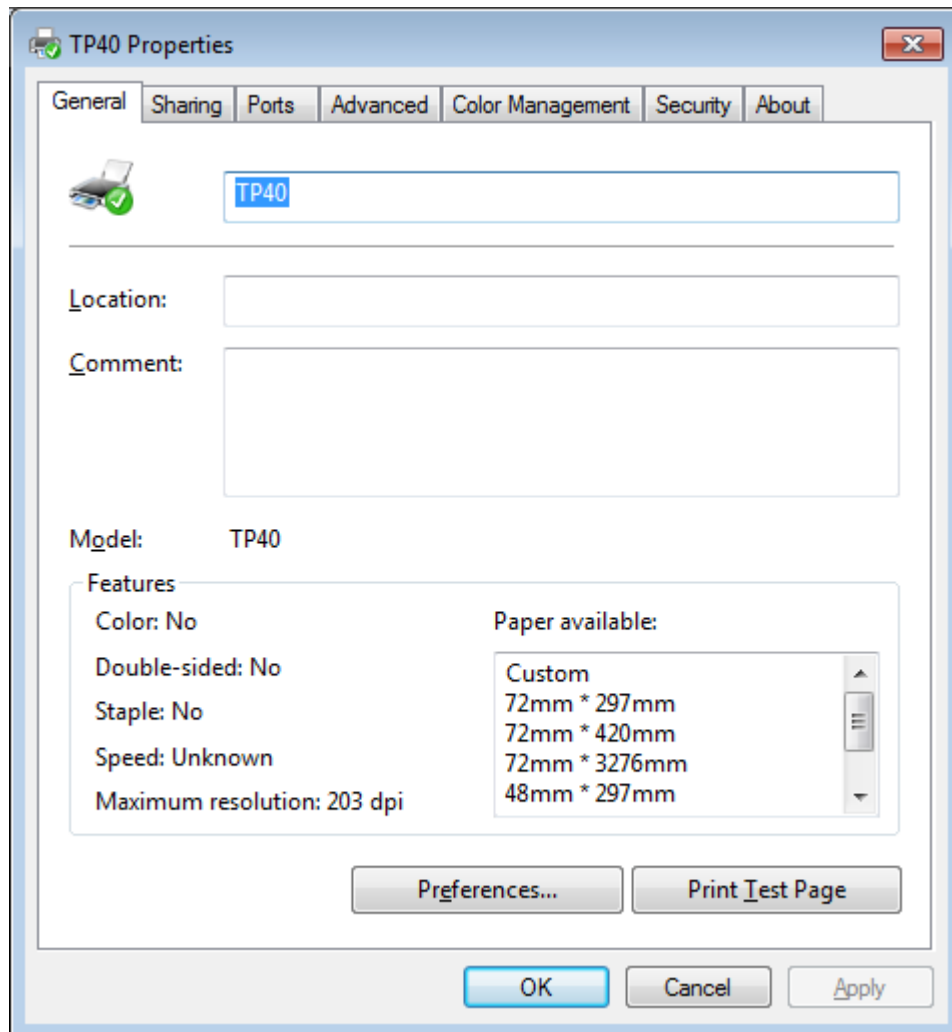


8.5.2 Other Settings

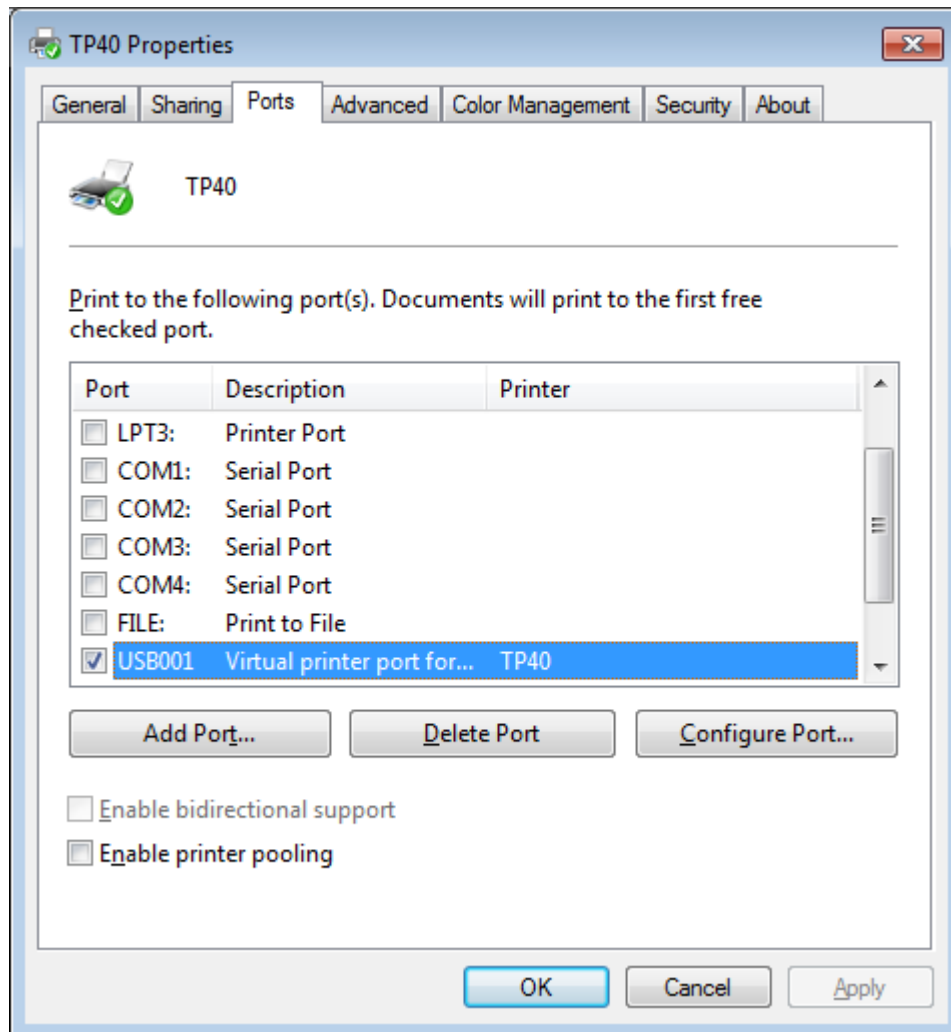
1. Click “Start” → “Devices and Printers”. Right click “TP40” and choose “Printer properties”.



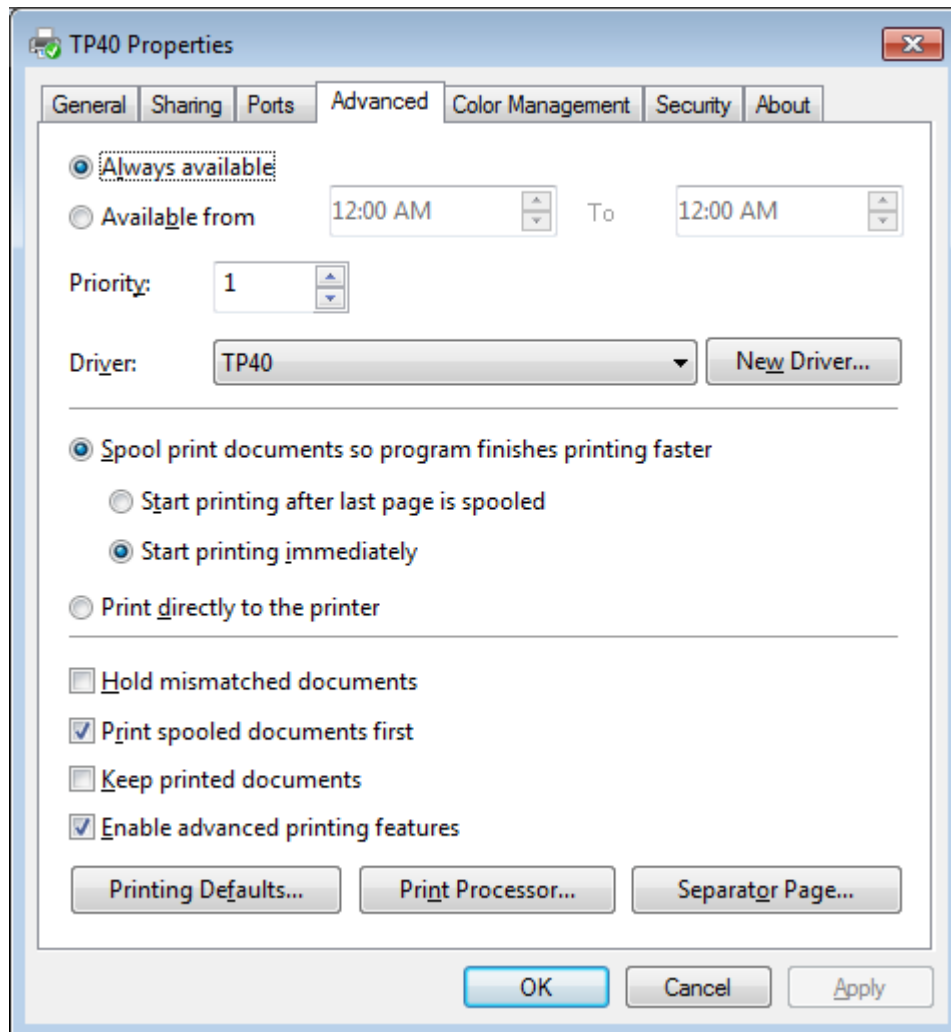
2. Choose "General", click on "Print Test Page", then it will print the current settings.



3. Setting the “Ports”

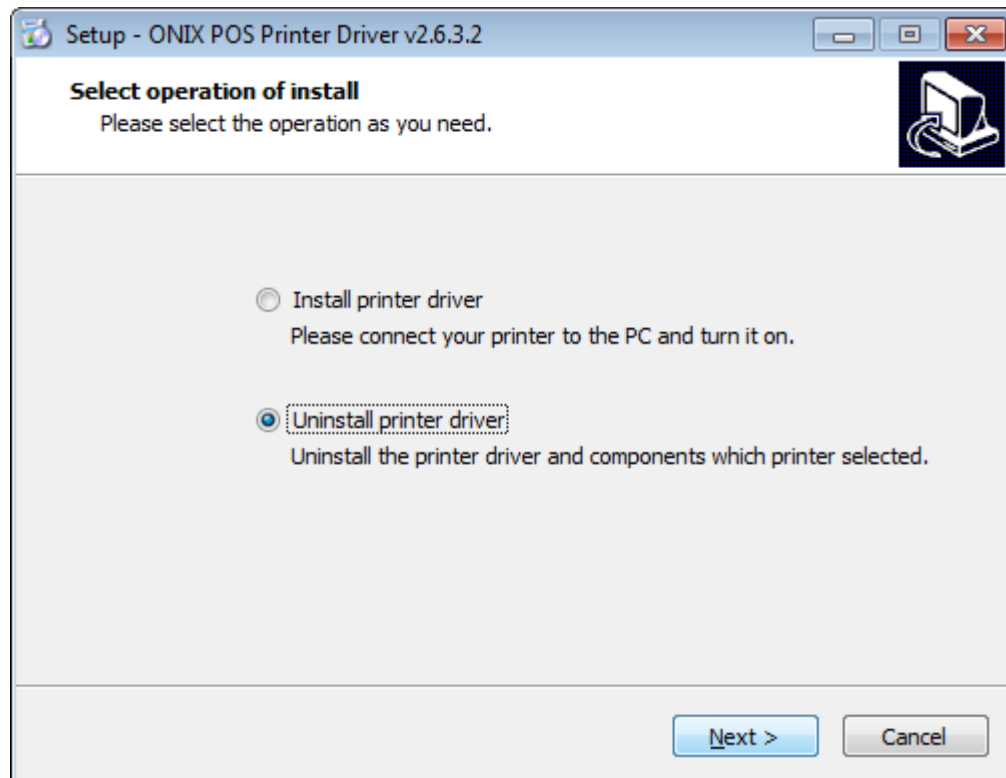


4. Click “Advanced” to set the printing time.

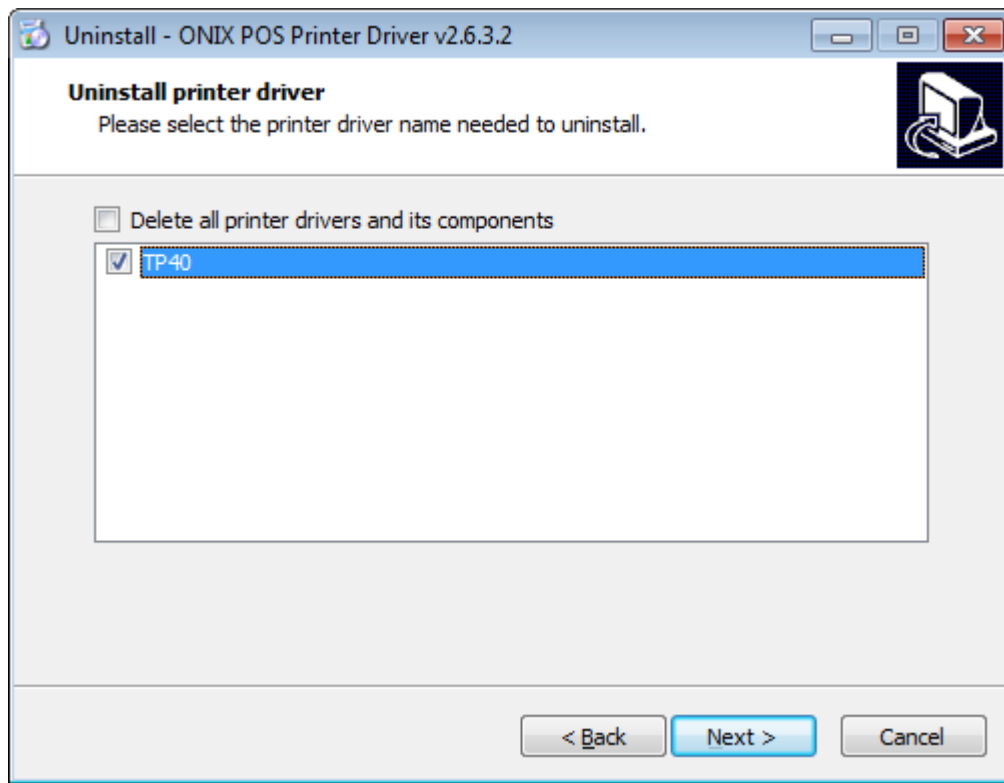


8.6. Uninstall Windows Driver

1. Double click Windows Driver.
2. Choose “Uninstall printer driver”, then click “Next”



3. Choose "TP40", then click "Next"



8.7 Specification

Resolution:

TP40: 203×203dpi

Paper Size:

70*297mm

72*420mm

72*3276mm